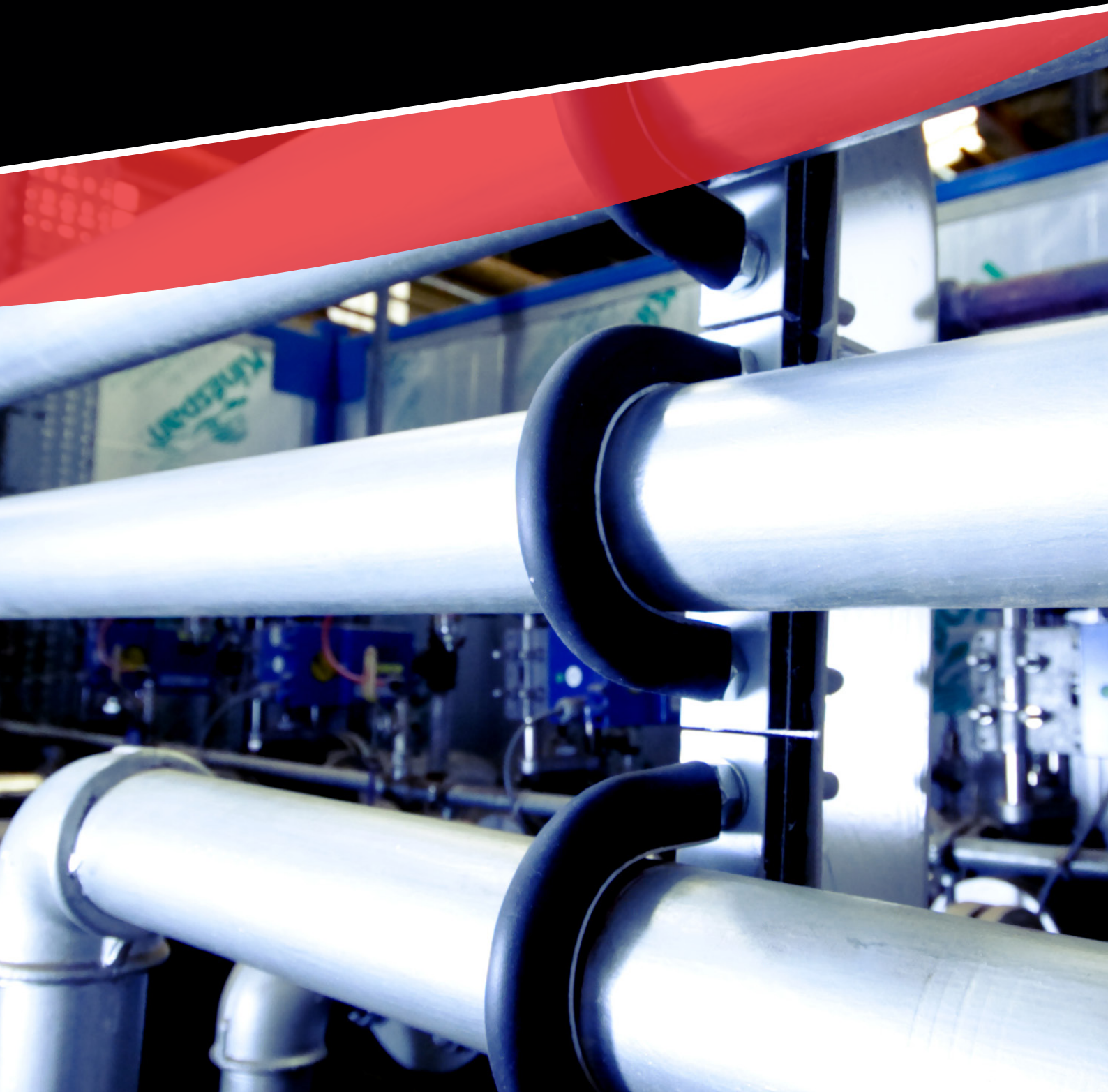




PIPE SUPPORT SOLUTIONS

Isolation Solutions for a Quieter World.



WHY CHOOSE TICO?

TICO have been designing anti-vibration and structural isolation solutions for over 75 years. We are a proud British manufacturer using raw materials from around the world to create engineered, high-performance elastomer isolation solutions.

TICO is designed to help eliminate pipework fatigue caused by excessive vibrations and is also used to reduce Vibration and Noise transmission from pumps, generators and compressors within Refineries and Petrochemical plants.



Our products are backed with full support from our Technical Support Team who are able to advise on the best solutions to a variety of different applications within various industries.

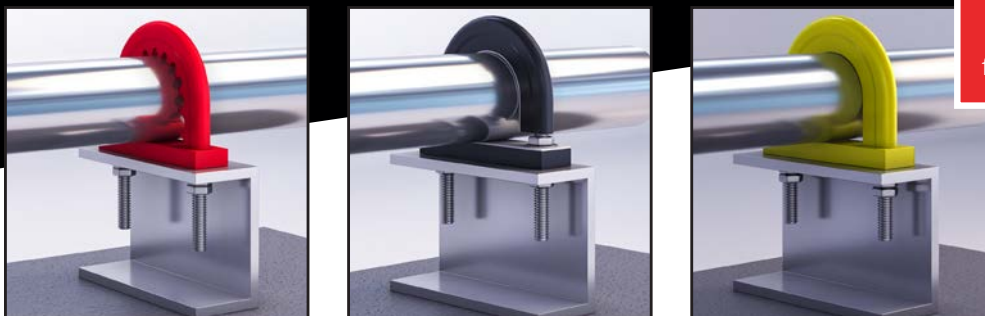
With vast experience and an extensive range of elastomers at our disposal, TICO are able to design and manufacture solutions to suit all project types.



PIPE SUPPORTS



Visit our website
for more information



TICO has for many years supplied products into the pipe support systems market. This experience allows us to develop new solutions and refine existing ones to meet the changing requirements of the sector. The TICO product range is highly flexible and adaptable, so whatever the application, TICO can recommend a solution.

Key Features:



Customisable
Design



Isolation /
Support



Long Design
Life



Maintenance
Free

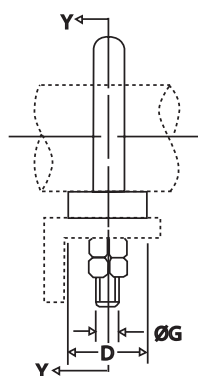
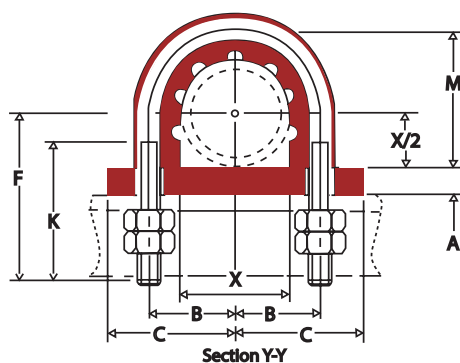


Fire
Retardant

TICO Pipe Supports have been designed specifically to isolate pipes, minimising vibration transmission between pipework and hanger and preventing corrosion between dissimilar metals. There are three designs of Pipe Support, a 'Guide Type' with PTFE inside surface to allow movement of the pipework, a 'Grip Type' which securely holds the pipe in place to prevent movement and a 'VHT' Support with a +300°C (+572°F) maximum continuous operational temperature.

Support Type: Grip

1. Serrated inner face on 'Grip Type' provides positive pipe retention.
2. Operational temperature range from -50°C to +120°C (-58°F to +248°F) continuous, +150°C (+302°F) intermittent.
3. Standard supply - galvanised and stainless steel.
4. Other steel grades also available.



Nominal Pipe Size		Part Number	Dimensions (mm)								
mm	Inch		A	B	C	D	F	G	K	M	X
12.70	1/2"	JW 152 - 21	10	18.5	30	25	60	6	57	29	21
19.00	3/4"	JW 152 - 27	10	21.5	34	25	65	6	60	35	27
25.40	1"	JW 152 - 34	10	25	36	25	65	6	60	42	34
31.75	1 1/4"	JW 152 - 43	10	34.5	45	25	70	10	60	56	43
38.10	1 1/2"	JW 152 - 49	10	37.5	49	25	80	10	70	62	49
50.80	2"	JW 152 - 61	10	43.5	55	25	90	10	75	74	61
76.20	3"	JW 152 - 89	10	57.5	70	25	100	12	75	102	89
101.60	4"	JW 152 - 115	10	70.5	83	25	110	12	75	128	115
152.40	6"	JW 152 - 168	15	105	123	50	180	16	120	189	168
203.20	8"	JW 152 - 219	15	131	150	50	199	16	120	240	219

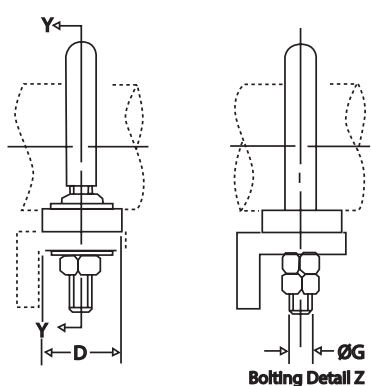
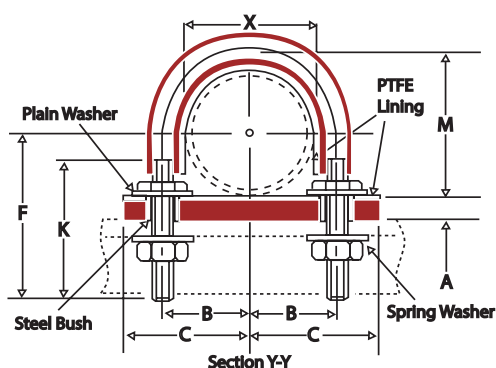
For the stainless pipes O/Ds of pipes are based on BS 3974 Part 1 1974 Table 10.

mm	Inch		A	B	C	D	F	G	K	M	X
12.70	1/2"	JW 153 - 16	10	16	30	25	60	6	54	24	16
19.00	3/4"	JW 153 - 25	10	20.5	34	25	65	6	58	33	25
25.40	1"	JW 153 - 30	10	23	36	25	65	6	61	38	30
31.75	1 1/4"	JW 153 - 38	10	32	45	25	70	10	62	51	38
38.10	1 1/2"	JW 153 - 45	10	35	49	25	80	10	70	57	44.5
50.80	2"	JW 153 - 57	10	41.5	55	25	90	10	75	70	57
63.50	2 1/2"	JW 153 - 76	10	51	67	25	100	12	75	89	76
76.20	3"	JW 153 - 89	10	57.5	70	25	100	12	75	102	89
101.60	4"	JW 153 - 108	10	67	83	25	110	12	75	121	108
152.40	6"	JW 153 - 159	15	100.5	119	50	180	16	120	180	159
203.20	8"	JW 153 - 219	15	131	150	50	199	16	120	240	219

For Cu/Ni pipes (based on seamless 'Kunifer 10' sizes) O/D of pipes conform to BS 2871 Part 2 Table 3. BS MA 18 Table 2 BS MA60. Also suitable for O/D stainless steel tubing.

Support Type: Guide

1. PTFE lined sleeve and pad allow pipe movement.
2. Operational temperature range from -50°C to +120°C (-58°F to +248°F) continuous, +150°C (+302°F) intermittent.
3. Standard supply - galvanised & stainless steel.
4. Other steel grades also available.



Nominal Pipe Size		Part Number	Dimensions (mm)								
mm	Inch		A	B	C	D	F	G	K	M	X
*12.70	1/2"	JW 172 - 21	10	18.5	30	25	60	6	57	29	21
*19.00	3/4"	JW 172 - 27	10	21.5	34	25	65	6	60	35	27
*25.40	1"	JW 172 - 34	10	25	36	25	65	6	60	42	34
* See bolt detail Z. These items are without steel bushes and washers.											
31.75	1 1/4"	JW 172 - 43	10	34.5	49	30	70	10	60	56	43
38.10	1 1/2"	JW 172 - 49	10	37.5	53	30	80	10	70	62	49
50.80	2"	JW 172 - 61	10	43.5	59	30	90	10	75	74	61
76.20	3"	JW 172 - 89	10	57.5	77	40	100	12	75	102	89
101.60	4"	JW 172 - 115	10	70.5	90	40	110	12	75	128	115
152.40	6"	JW 172 - 168	15	105	129	50	180	16	120	189	168
203.20	8"	JW 172 - 219	15	131	156	50	199	16	120	240	219

For the stainless pipes O/Ds of pipes are based on BS 3974 Part 1 1974 Table 10.

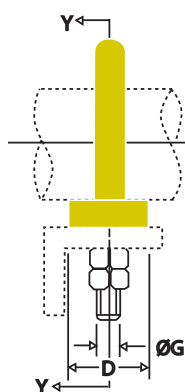
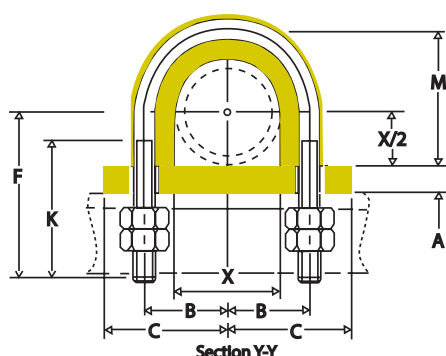
Nominal Pipe Size		Part Number	Dimensions (mm)								
mm	Inch		A	B	C	D	F	G	K	M	X
*12.70	1/2"	JW 173 - 16	10	16	30	25	60	6	54	24	16
*19.00	3/4"	JW 173 - 25	10	20.5	34	25	65	6	58	33	25
*25.40	1"	JW 173 - 30	10	23	36	25	65	6	61	38	30
* See bolt detail Z. These items are without steel bushes and washers.											
31.75	1 1/4"	JW 173 - 38	10	32	49	30	70	10	62	51	38
38.10	1 1/2"	JW 173 - 45	10	35	53	30	80	10	70	57	44.5
50.80	2"	JW 173 - 57	10	41.5	59	30	90	10	75	70	57
63.50	2 1/2"	JW 173 - 76	10	51	74	40	100	12	75	89	76
76.20	3"	JW 173 - 89	10	57.5	77	40	100	12	75	102	89
101.60	4"	JW 173 - 108	10	67	90	40	110	12	75	121	108
152.40	6"	JW 173 - 159	15	100.5	129	50	180	16	120	180	159
203.20	8"	JW 173 - 219	15	131	156	50	199	16	120	240	219

For Cu/Ni pipes (based on seamless 'Kunifer 10' sizes) O/Ds of pipes conform to BS2871 Part 2 Table 3. BS MA 18 Table 2 BS MA60.

Dimensions in mm unless otherwise stated. Non-standard sizes are available on request.

Support Type: VHT

1. High temperature sleeve to clamp pipe.
2. Operational temperature range from -60°C to +300°C (-76°F to +572°F) continuous, +350°C (+662°F) intermittent.
3. Standard supply - galvanised & stainless steel.
4. Other steel grades also available.



Nominal Pipe Size		Part Number	Dimensions (mm)								
mm	Inch		A	B	C	D	F	G	K	M	X
12.70	1/2"	JW 352 - 21	10	18.5	30	25	60	6	57	29	21
19.00	3/4"	JW 352 - 27	10	21.5	34	25	65	6	60	35	27
25.40	1"	JW 352 - 34	10	25	36	25	65	6	60	42	34
31.75	1 1/4"	JW 352 - 43	10	34.5	45	25	70	10	60	56	43
38.10	1 1/2"	JW 352 - 49	10	37.5	49	25	80	10	70	62	49
50.80	2"	JW 352 - 61	10	43.5	55	25	90	10	75	74	61
76.20	3"	JW 352 - 89	10	57.5	70	25	100	12	75	102	89
101.60	4"	JW 352 - 115	10	70.5	83	25	110	12	75	128	115
152.40	6"	JW 352 - 168	10	105	123	50	180	16	120	189	168
203.20	8"	JW 352 - 219	10	131	150	50	199	16	120	240	219

Stainless pipes O/Ds of pipes are based on BS 3974 Part 1 1974 Table 10.

Nominal Pipe Size		Part Number	Dimensions (mm)								
mm	Inch		A	B	C	D	F	G	K	M	X
12.70	1/2"	JW 353 - 16	10	16	30	25	60	6	54	24	16
19.00	3/4"	JW 353 - 25	10	20.5	34	25	65	6	58	33	25
25.40	1"	JW 353 - 30	10	23	36	25	65	6	61	38	30
31.75	1 1/4"	JW 353 - 38	10	32	45	25	70	10	62	51	38
38.10	1 1/2"	JW 353 - 45	10	35	49	25	80	10	70	57	44.5
50.80	2"	JW 353 - 57	10	41.5	55	25	90	10	75	70	57
63.50	2 1/2"	JW 353 - 76	10	51	67	25	100	12	75	89	76
76.20	3"	JW 353 - 89	10	57.5	70	25	100	12	75	102	89
101.60	4"	JW 353 - 108	10	67	83	25	110	12	75	121	108
152.40	6"	JW 353 - 159	10	100.5	119	50	180	16	120	180	159
203.20	8"	JW 353 - 219	10	131	150	50	199	16	120	240	219

For Cu/Ni pipes (based on seamless 'Kunifer 10' sizes) O/D of pipes conform to BS 2871 Part 2 Table 3. BS MA 18 Table 2 BS MA60. Also suitable for O/D stainless steel tubing.

PIPE CLAMP STRIP LINER



Find out more on
our website



TICO Pipe Clamp Strip Liners (Clip Strips) have been designed to provide the highest level of shock and vibration isolation between pipework and hangers. Available in three grades for varying applications, Clip Strips fit most common strap widths, are easy to install and can be supplied to suit temperatures up to +300°C (572°F).

Key Features:



Customisable
design



Isolation
Corrosion
Protection



Long design
life



Maintenance
Free



Fire
Retardant

Clamp Liner Type: S/CL

1. Colour: Red.
2. Operational temperature: -40°C to +100°C (-40°F to +212°F).



Part Number	JW Ref Number	Base Thickness (A)	Clip Width (B)	Recess Depth (R)	Wall Width (W)
TK-070120	55-50	3mm (0.12")	12.5mm (0.49")	1.5mm (0.06")	3mm (0.12")
TK-070198	55-75	3mm (0.12")	19mm (0.75")	1.5mm (0.06")	3mm (0.12")
TK-070252	55-100	5mm (0.20")	25mm (0.98")	2.5mm (0.10")	6mm (0.24")
TK-070325	55-125	5mm (0.20")	32mm (1.26")	2.5mm (0.10")	6mm (0.24")
TK-101985	55-150	6mm (0.24")	38mm (1.50")	2.5mm (0.10")	6mm (0.24")
TK-070406	55-175	6mm (0.24")	40mm (1.57")	2.5mm (0.10")	6mm (0.24")
TK-070503	55-200	6mm (0.24")	50mm (1.97")	2.5mm (0.10")	6mm (0.24")
TK-070635	55-250	6mm (0.24")	64mm (2.52")	2.5mm (0.10")	6mm (0.24")
TK-070759	55-300	9.5mm (0.37")	75mm (2.95")	5mm (0.20")	12.5mm (0.49")
TK-071003	55-400	9.5mm (0.37")	100mm (3.94")	5mm (0.20")	12.5mm (0.49")
TK-071259	55-500	9.5mm (0.37")	125mm (4.92")	5mm (0.20")	12.5mm (0.49")
TK-07150X	55-600	12.5mm (0.49")	150mm (5.91")	6mm (0.24")	19mm (0.75")

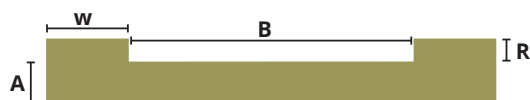
Expanding Product Size Options in Our Catalogue

We're excited to announce that we've expanded our product size offerings to better cater to your needs. Our catalogue now includes an additional set of standard clamp liner sizes, providing you with even more choices to find the perfect fit for your requirements.

Part Number	JW Ref Number	Base Thickness (A)	Clip Width (B)	Recess Depth (R)	Wall Width (W)
TK-102283	60-130	6mm (0.24")	32mm (1.26")	2.5mm (0.10")	6mm (0.24")
TK-102284	60-140	6mm (0.24")	35mm (1.38")	2.5mm (0.10")	6mm (0.24")
TK-102285	60-185	6mm (0.24")	45mm (1.77")	2.5mm (0.10")	6mm (0.24")
TK-102286	60-225	6mm (0.24")	55mm (2.17")	2.5mm (0.10")	6mm (0.24")
TK-102287	60-275	6mm (0.24")	65mm (2.56")	2.5mm (0.10")	6mm (0.24")
TK-102288	60-300	6mm (0.24")	75mm (2.95")	2.5mm (0.10")	6mm (0.24")
TK-102289	60-350	6mm (0.24")	85mm (3.35")	5mm (0.20")	12.5mm (0.49")
TK-102290	60-375	6mm (0.24")	95mm (3.74")	5mm (0.20")	12.5mm (0.49")
TK-102291	60-425	6mm (0.24")	105mm (4.13")	5mm (0.20")	12.5mm (0.49")
TK-102292	60-450	6mm (0.24")	115mm (4.53")	5mm (0.20")	12.5mm (0.49")
TK-102293	60-525	6mm (0.24")	135mm (5.32")	5mm (0.20")	12.5mm (0.49")
TK-102294	60-550	6mm (0.24")	145mm (5.71")	5mm (0.20")	12.5mm (0.49")
TK-102295	60-575	6mm (0.24")	150mm (5.91")	5mm (0.20")	12.5mm (0.49")

Clamp Liner Type: HT/CL

1. Colour: Green.
2. Operational temperature: -40°C to +150°C (-40°F to +302°F).



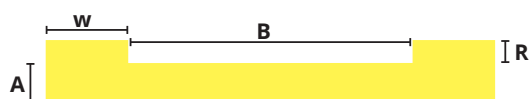
Part Number	JW Ref Number	Base Thickness (A)	Clip Width (B)	Recess Depth (R)	Wall Width (W)
TK-030129	55-50	3mm (0.12")	12.5mm (0.49")	1.5mm (0.06")	3mm (0.12")
TK-030196	55-75	3mm (0.12")	19mm (0.75")	1.5mm (0.06")	3mm (0.12")
TK-030250	55-100	5mm (0.20")	25mm (0.98")	2.5mm (0.10")	6mm (0.24")
TK-030323	55-125	5mm (0.20")	32mm (1.26")	2.5mm (0.10")	6mm (0.24")
TK-102190	55-150	6mm (0.24")	38mm (1.50")	2.5mm (0.10")	6mm (0.24")
TK-102928	55-175	6mm (0.24")	40mm (1.57")	2.5mm (0.10")	6mm (0.24")
TK-030501	55-200	6mm (0.24")	50mm (1.97")	2.5mm (0.10")	6mm (0.24")
TK-030633	55-250	6mm (0.24")	64mm (2.52")	2.5mm (0.10")	6mm (0.24")
TK-030757	55-300	9.5mm (0.37")	75mm (2.95")	5mm (0.20")	12.5mm (0.49")
TK-031001	55-400	9.5mm (0.37")	100mm (3.94")	5mm (0.20")	12.5mm (0.49")
TK-031257	55-500	9.5mm (0.37")	125mm (4.92")	5mm (0.20")	12.5mm (0.49")
TK-031508	55-600	12.5mm (0.49")	150mm (5.91")	6mm (0.24")	19mm (0.75")

Expanding Product Size Options in Our Catalogue

Part Number	JW Ref Number	Base Thickness (A)	Clip Width (B)	Recess Depth (R)	Wall Width (W)
TK-102297	60-130	6mm (0.24")	32mm (1.26")	2.5mm (0.10")	6mm (0.24")
TK-102298	60-140	6mm (0.24")	35mm (1.38")	2.5mm (0.10")	6mm (0.24")
TK-102299	60-185	6mm (0.24")	45mm (1.77")	2.5mm (0.10")	6mm (0.24")
TK-102300	60-225	6mm (0.24")	55mm (2.17")	2.5mm (0.10")	6mm (0.24")
TK-102301	60-275	6mm (0.24")	65mm (2.56")	2.5mm (0.10")	6mm (0.24")
TK-102302	60-300	6mm (0.24")	75mm (2.95")	2.5mm (0.10")	6mm (0.24")
TK-102303	60-350	6mm (0.24")	85mm (3.35")	5mm (0.20")	12.5mm (0.49")
TK-102304	60-375	6mm (0.24")	95mm (3.74")	5mm (0.20")	12.5mm (0.49")
TK-102305	60-425	6mm (0.24")	105mm (4.13")	5mm (0.20")	12.5mm (0.49")
TK-102306	60-450	6mm (0.24")	115mm (4.53")	5mm (0.20")	12.5mm (0.49")
TK-102307	60-525	6mm (0.24")	135mm (5.32")	5mm (0.20")	12.5mm (0.49")
TK-102308	60-550	6mm (0.24")	145mm (5.71")	5mm (0.20")	12.5mm (0.49")
TK-102309	60-575	6mm (0.24")	150mm (5.91")	5mm (0.20")	12.5mm (0.49")

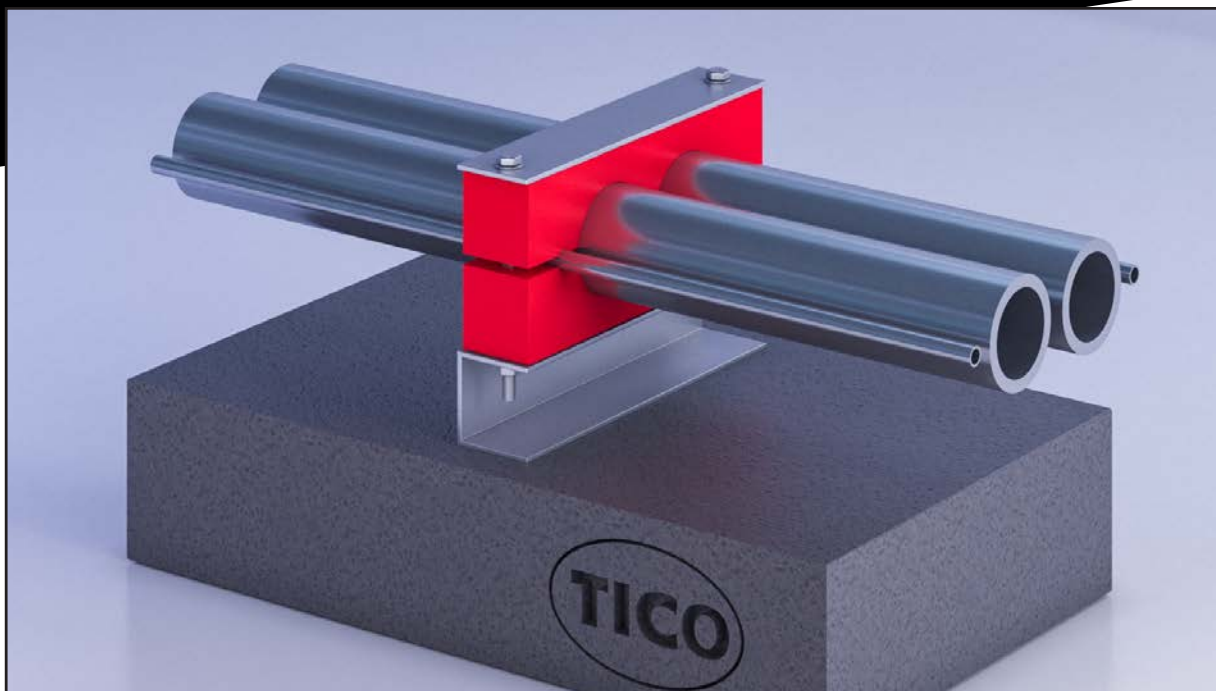
Clamp Liner Type: VHT/CL

1. Colour: Yellow.
2. Operational temperature: -60°C to +300°C (-76°F to +572°F) continuous, +350°C (+662°F) intermittent.



Part Number	Base (A)Thickness	Clip Width (B)	Recess Depth (R)	Wall Width (W)
TK-000300	2mm (0.08")	35mm (1.38")	2mm (0.08")	5mm (0.20")
TK-000408	2mm (0.08")	45mm (1.77")	2mm (0.08")	5mm (0.20")
TK-000505	2mm (0.08")	55mm (2.17")	2mm (0.08")	5mm (0.20")
TK-000602	2mm (0.08")	65mm (2.56")	2mm (0.08")	5mm (0.20")
TK-00070X	2mm (0.08")	75mm (2.95")	2mm (0.08")	5mm (0.20")
TK-000807	2mm (0.08")	85mm (3.35")	2mm (0.08")	5mm (0.20")
TK-000904	2mm (0.08")	95mm (3.74")	2mm (0.08")	5mm (0.20")
TK-001005	2mm (0.08")	105mm (4.13")	2mm (0.08")	5mm (0.20")
TK-001102	2mm (0.08")	115mm (4.53")	2mm (0.08")	5mm (0.20")

PIPE CLAMP BLOCKS



TICO Pipe Clamp Blocks are a bespoke solution to anchoring of pipes. Manufactured in any one of the multiple TICO elastomers they are able to absorb shock and vibration caused by fluid velocity and turbulence in pipes that would otherwise be transmitted through the clamp to the surrounding structure or building.

Key Features:



Customisable
Design



Isolation /
Support



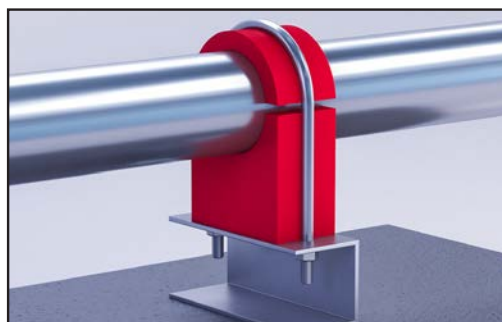
Long Design
Life



Maintenance
Free

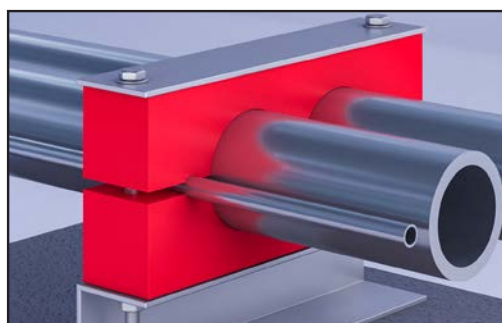
Clamp Blocks Type: Single

1. Designed for use with a U-bolt.
2. Standard dimensions are available but can be custom sized for specific applications.
3. Can be supplied with a low friction interior lining (TICO S/NG/CB Clamp Block).



Clamp Blocks Type: Multi

1. Ideally suited for maintaining a regular spacing of pipes with the additional benefits of vibration attenuation.
2. Custom designed and manufactured to order.



SPRING PIPE HANGERS



Spring Pipe Hangers provide the most effective vibration isolation with a low natural frequency of around 2-3 Hz. A wide range of spring hangers are available to meet the needs of each project depending of loads and performance requirements.

The spring systems are manufactured in accordance with ISO EN 10270 and are supplied with a painted or galvanised finish.

Key Features:



**Customisable
design**



**Low Natural
Frequency**



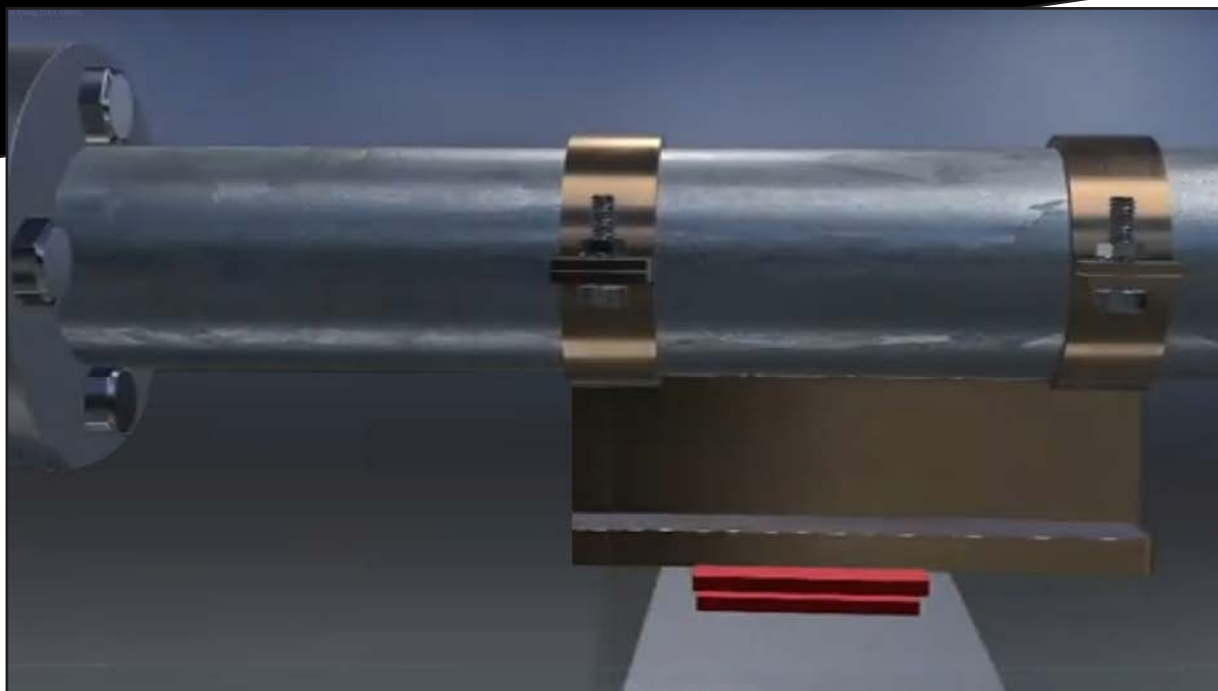
**Long design
life**



**Maintenance
Free**

- Can be used for loads up to 750kg per unit.
- Can be supplied with corrosion resistant galvanised finish.
- Designed to prevent sound bridging.
- Can be supplied with variety of hanging attachments.
- Acceptable rod misalignment up to 30° arc.

SLIDE BEARINGS



TICO Slide Bearing Assemblies are designed to accommodate large allowable movements within a wide range of pipework applications. These assemblies are custom designed to meet specific application requirements; such as load bearing and rotation as well as movement.

Key Features:



Customisable
design



Long design
life



Maintenance
Free



Isolation /
Support



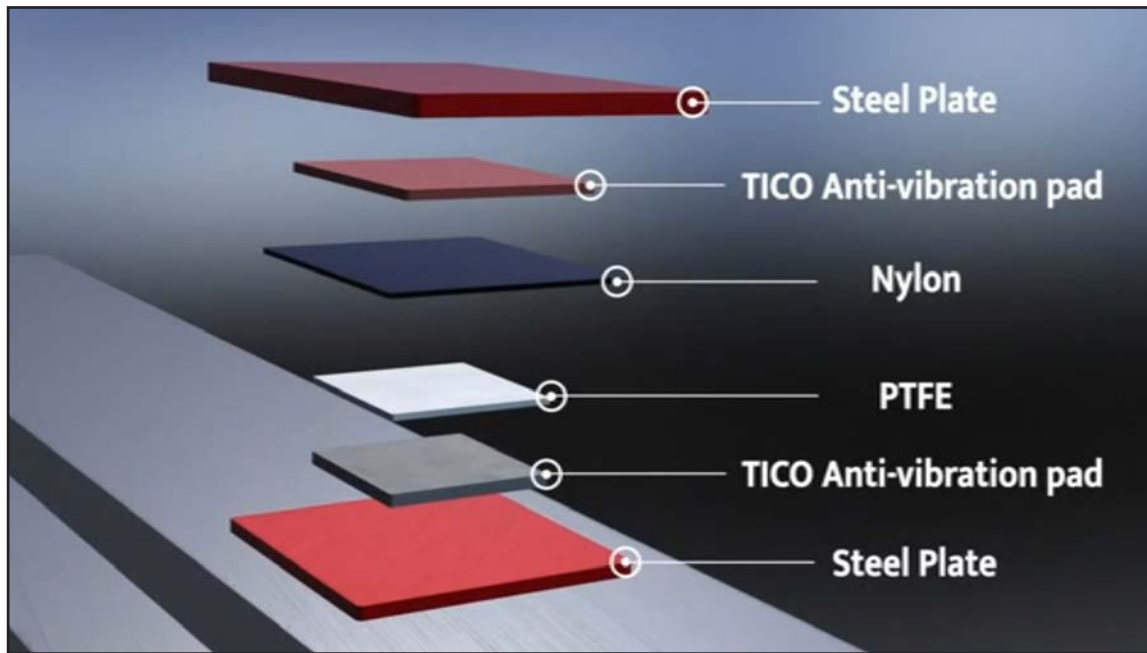
Movement

Overview

Typically a TICO Slide Bearing unit consists of two components - an upper and a lower member - both of which have a low friction bearing surface.

The two components of the slide bearing unit are installed so that the two low friction surfaces are in contact with one another, normally with the lower member attached to the fixed part of the structure, and the upper member attached to the part of the structure which is free to move.

In service the interface between the two components acts as a low friction sliding surface which takes up movement of the upper part of the structure with minimal transfer of shear force into the lower part.



Component Parts

TICO Slide Bearing components are available in several different grades and thicknesses to accommodate a wide range of loads and movements.

The typical upper member component of a TICO Slide Bearing unit is TICO S/NG/PA - a molybdenum disulphide loaded nylon low friction material with a thin backing of TICO S which acts as a bond-able substrate.

There are a number of standard lower member TICO materials available to cater for different loading conditions, for example:

Grade	S/PT/PA	B/PT/PA	Z/PT/PA	RF/PT/PA	PF/PT/PA
Load Bearing Capacity MN/m ²	0.5	1	1.4	7	15.5

The TICO backing material provides:

1. A bondable substrate that can accommodate surface irregularities in the structure.
2. Low pad deflection to keep pipe line levels consistent.
3. Vibration attenuation.

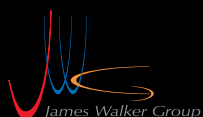




PIPE SUPPORT SOLUTIONS

Tiflex house, Liskeard, Cornwall. PL14 4NB UK

tico@tico-solutions.com | +44 (0) 1579 320808 | www.tico-solutions.com



TREADMASTER



treadmaster
flooring

TRACKELAST

A division of
Tiflex