



**VisionPlus**

# Mastering the Landscape with Vision and Precision

Automate and simplify complex processes with  
VisionPlus for a seamless and efficient workflow.

---

[geo-plus.com](http://geo-plus.com)

## SPECIFICATIONS OVERVIEW

# ESSENTIAL TOOLS FOR SURVEYORS

VisionPlus is developed by surveyors for surveyors. Paired with AutoCAD®, Microstation®, Civil3D®, AutoCAD Map®, and BricsCAD®, VisionPlus is the essential tool for managing your projects efficiently and accurately.

<b>Supported Hardware</b>	Windows 10 and 11, 64 bits French and English version
<b>Compatibility</b>	Autodesk, BricsCAD®, Bentley
<b>Training</b>	Yes
<b>Native Storage Format</b>	SQLite
<b>Input Formats</b>	LandXML, JXL, LAS, RAW, JOB, GDT and Others
<b>Export Formats</b>	dwg, dxf, dgn, LandXML, Civil3D objects, GeoJson, ORD and others
<b>Managed object types</b>	<ul style="list-style-type: none"><li>• Cogo point</li><li>• Feature codes</li><li>• Notes (text, photos)</li><li>• Chains (Feature Line)</li><li>• Parcel (Polygone)</li><li>• Building</li><li>• Surface</li></ul>
<b>CAD representation of the objects</b>	<ul style="list-style-type: none"><li>• Drawing Layers Styles</li><li>• Symbols (blocks, Cells)</li><li>• Lines and multi-lines</li><li>• Polyline</li><li>• Text/multi-text (annotations)</li><li>• Spline</li></ul>
<b>Errors detection tools</b>	<ul style="list-style-type: none"><li>• Field Data observations</li><li>• Crossing breaklines</li><li>• Parcels conformity</li><li>• Others</li></ul>
<b>Modification follow up</b>	Transaction files
<b>Specific deliverables tools</b>	<ul style="list-style-type: none"><li>• Certificate of localisation</li><li>• Lots description</li><li>• Building implantation</li><li>• Profile plan</li><li>• Cross section plan</li><li>• Volume calculation</li></ul>

## SURVEYOR BENEFITS

# WHY VISIONPLUS STANDS OUT



### Standards Compliance

VisionPlus supports any government-issued standards for land surveying, ensuring compliance.



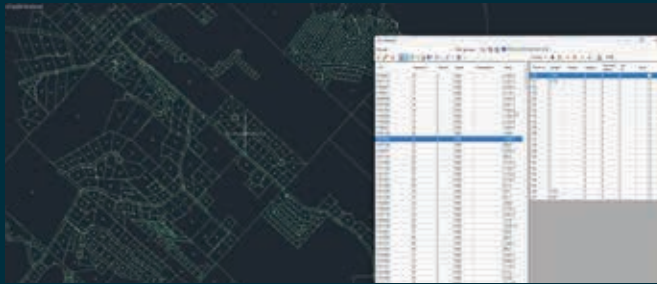
### COGO Tools

Easily perform coordinate geometry operations for accurate site calculations.

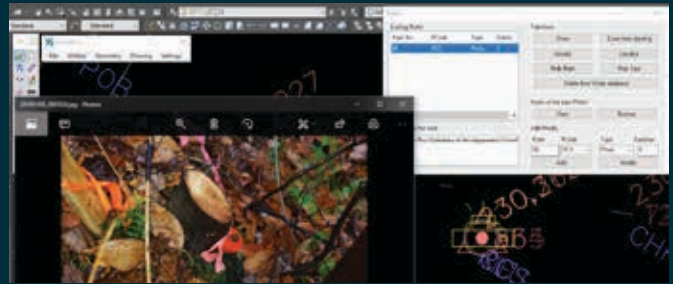


### Surface Modeling

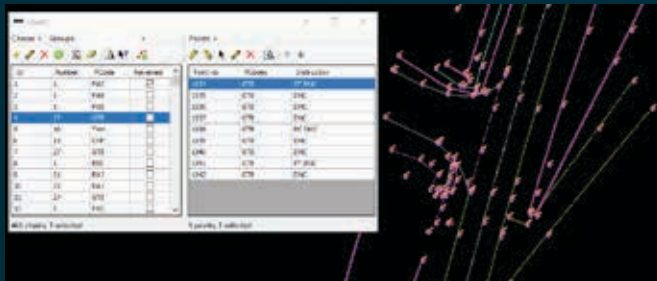
Create precise 3D models of terrain from your survey data.



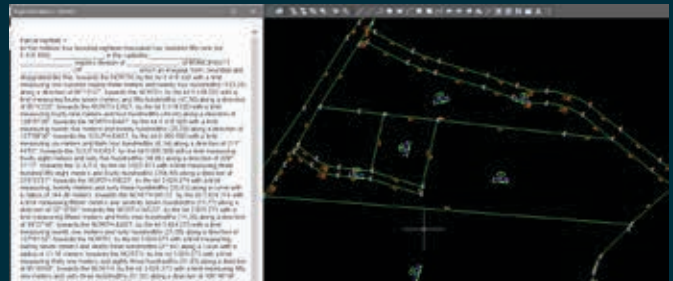
### Automated Parcels Generation



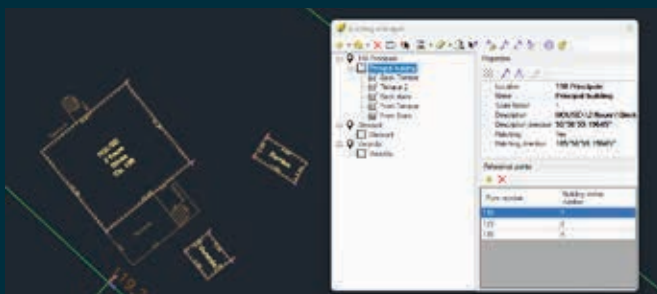
### Note Management



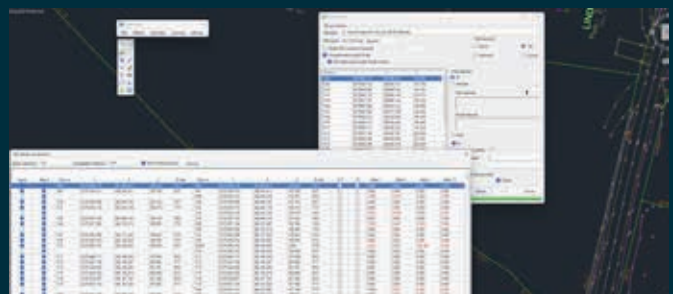
### Connectivity Tools



### Automatic Technical Documentation



### Building Management



### Validation Process

## ABOUT US

# ADVANCED DATA ANALYSIS TOOLS SINCE 1987

At Geo-Plus, we specialize in advanced data analysis tools that help manage and analyze large-scale spatial data, optimizing operations and decision-making processes. We've dedicated ourselves to empowering companies with cutting-edge software solutions. Our intuitive tools streamline workflows, enhance precision, and ensure regulatory compliance, leveraging the power of digital twin technology and LiDAR data. With decades of expertise, we help utilities create safer, resilient, and sustainable infrastructure networks, meeting community needs now and in the future.

61K CLIENTS    41 COUNTRIES    18 PRODUCTS    34 RESELLERS



+1 800-672-1733 ext 144  
information@geo-plus.com • geo-plus.com