

# eScan M1

## Anywhere You Go

The combination of zero-processing algorithms and anti-fuzzy technology balances speed and accuracy.

Industry-leading portability, breaking through the traditional device bulky limitations.

With “high efficiency, precision, lightweight and openness” as the core, it provides users with a full-process optimization experience from data collection to application landing.



LiDAR

### Real Time Data

Zero processing after scanning, point cloud exported for immediate use.

### True Natural Colored

Industrial-grade cameras equipped with advanced shutter technology eliminate motion blur.

### Modular Design

The Type-C port supports the expansion of external devices such as panoramic cameras and RTKs.

### Lightweight and Easy to Use

Weighing only 560g, the simple operation interface makes it quick to master the use of the device.



Website



Social media

# Product Specification

## eScan M1

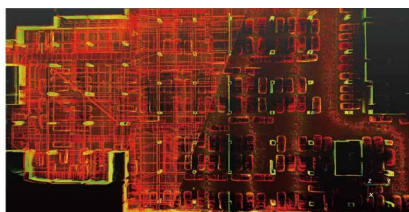
### HANDHELD LIDAR SCANNER



	Standard
Range	40 m @ 10% reflectivity, 70 m @ 80% reflectivity
LiDAR channels	40
Points per second	200000
FOV	360°X59°
Laser product classification	Level 1
Laser wavelength	905nm
Relative accuracy	2cm
Absolute accuracy	3-5cm
Point cloud thickness	1cm (no filter)
Data format	LAS, LAZ
Resolution	Dual Fisheye 5 Megapixel
camera lens	Global Shutter Camera

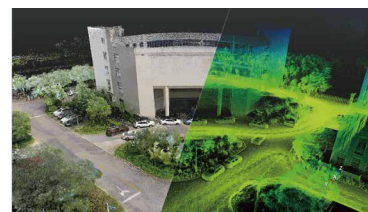
Dimensions(Main Unit	115 mm X 110 mm X 83 mm
battery capacity	5000mAh
Working time	1.5h
Storage	512G
Weight (no Better)	560 g



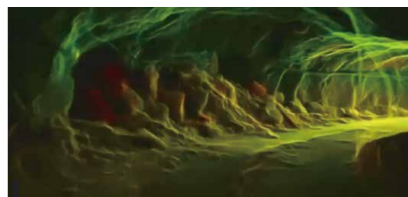
Garage



Garden



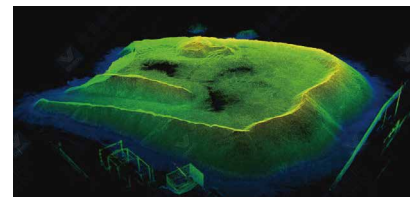
Architecture



Mine tunnel



Forestry



Volume calculation

Note: The sample point cloud data displayed in datasheet are acquired by eHLS2 Standard version with 32 LiDAR channels.