



ARASAR

High-Tech Demolition Solutions



ABOUT THE COMPANY

The history of “Arasar” began in 1998 with the idea of creating a specialized demolition company. The Company is based in United Arab Emirates (UAE) and today we are leaders in the field of industrial demolition and special dismantling works.

The pride of the company is a friendly and experienced team of professionals and an unique fleet of heavy machinery and equipment, allowing us to perform works in a variety of climatic and industrial conditions.





2200+ PROJECTS

The geography of the company's works is vast and extends all over the World.

750+ EMPLOYEES

Our team possesses the most modern methods of labor organization and dismantling works

SINCE 1998

We have been working in nuclear, metallurgical, chemical, construction and other fields.



QUALITY POLICY AND LICENSES

The quality policy of our organization is aimed at constant and continuous development of the company.

We strive to create sustainable trust to the company on the part of all market participants and improve the quality of services provided in the field of industrial, civil, special dismantling and related works.

To achieve these goals “Arasar” constantly improves the production base, implements advanced technologies, applies the most modern technological equipment.



[arasarinternational.ae](https://www.arasarinternational.ae)

Anasar Group of Companies has more than 15 licenses in the field of demolition and ecology, allowing to perform works on complex projects.

OCCUPATIONAL SAFETY AND PRODUCTION CULTURE

The basis of "Arasar" work is employee safety, health protection and production culture.

The use of modern equipment, constant monitoring of technological processes, regular training and certification of personnel for knowledge of HSE rules and regulations, all this together allows us to achieve our goals.

High level of personal responsibility of our personnel, their demanding attitude to themselves and surrounding participants of the demolition process make our work safe.

The company ensures the growth of professionalism and continuous professional development of personnel, and involvement of each employee in activities for improving the quality of provided services.





The company ensures the growth of professionalism and continuous professional development of personnel, and involvement of each employee in activities for improving the quality of provided services.

A large yellow crawler crane is lifting a concrete block at a construction site. The crane is positioned on the right side of the frame, with its long boom extending towards the left. A concrete block is suspended from the end of the boom by a cable. In the background, there is a bridge structure under construction, with concrete pillars and steel beams visible. The sky is blue with some clouds. The overall scene is a construction site during the day.

MACHINERY FLEET AND EQUIPMENT

Using special attachments on heavy-duty machinery, we achieve maximum productivity without the need for manual labor.

Powerful hydraulic hammers for breaking foundations, hydraulic shears for dismantling concrete structures and cutting scrap metal, clamshell buckets - this is just a partial list of our arsenal.



Since 2022, Arasar Group of Companies has been engaged in its own production of diamond and attachment equipment for dismantling.

Our arsenal includes all known dismantling technologies and 217 units of special machinery and equipment for large-scale projects and local tasks.



We use controlled demolition technology without manual labor. We rely on our own extensive experience and modern technologies, the combination of which allows us to solve any demolition task: from the demolition of large freestanding industrial buildings to the “jewelry dismantling” of enclosures and parts of structures in tight spaces.

Whether it is an abandoned, unfinished building or the hulls of an existing facility, we will select the optimal combination of technologies and tools for quality work at all stages.

We also use diamond technology to fragment building elements and then remove them with a crane.

PROJECT “METALLURGICAL PLANT”

4 MONTHS

work timeframe

10 000 TONS

steel structures dismantled

45 UNITS

number of vehicles
on the project site

120 PEOPLE

number of employees

2 000 TONS

process equipment saved



A tandem of modern equipment and trained personnel safely and quickly performs the tasks of eliminating high-rise objects.

We use specialized excavators - Demolition with extended booms, driven by experienced operators.

DIAMOND TECHNOLOGIES

“Arasar” Group of Companies is a market leader in diamond technologies with extensive positive experience in delivering projects across the globe.

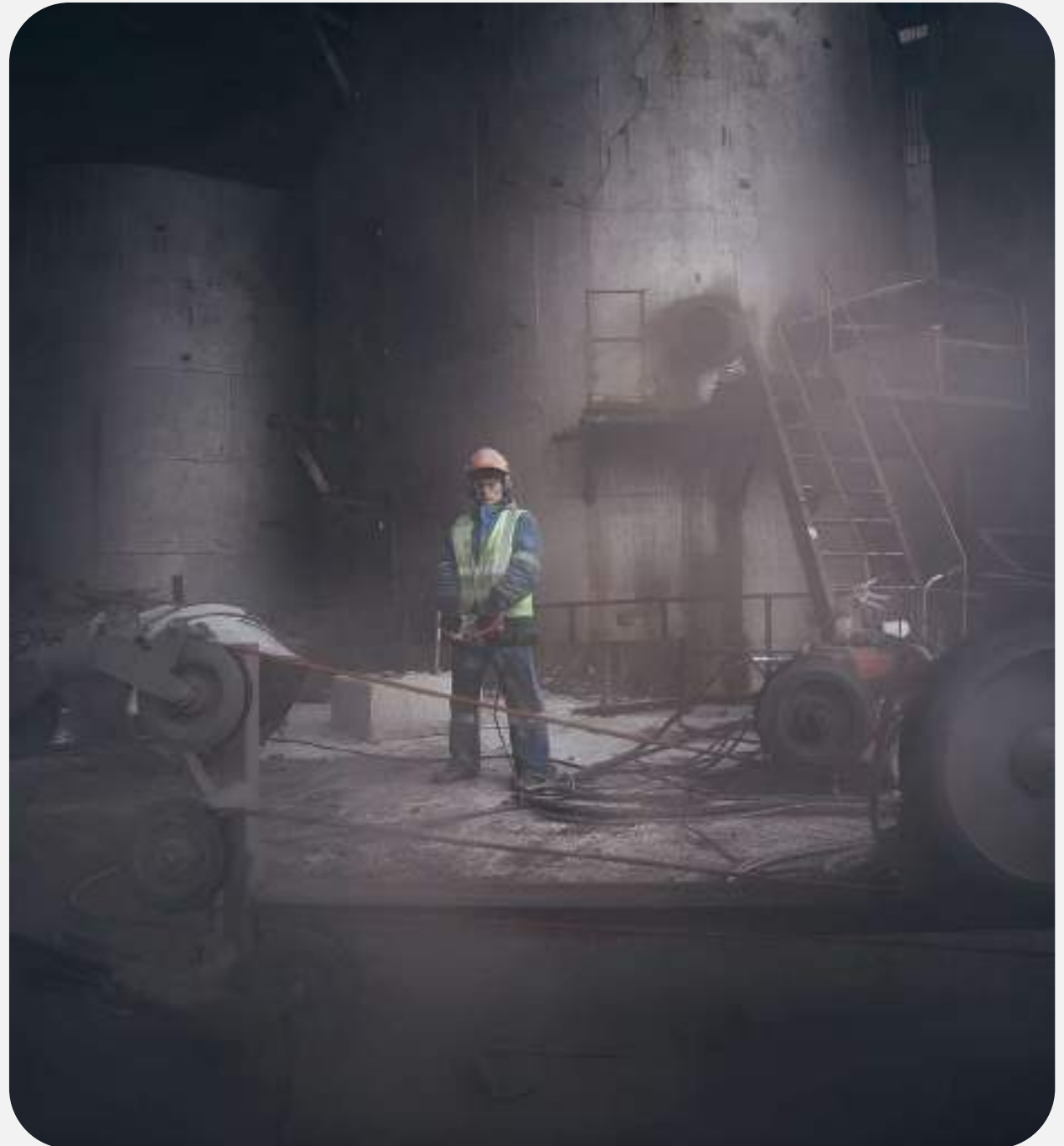
Our expertise includes:

- Creating technological openings and holes for the installation of various utilities and communications;
- Construction of small-diameter holes with chemical anchor installation;
- Specialized drilling projects, including great depths or large diameters.

The company's portfolio showcases unique projects such as:

- Renowned historical landmarks;
- Industrial structures exceeding 80 meters in height;
- Underwater structures, as well as nuclear, power, and hydraulic infrastructure.

Arasar's innovative solutions and proven expertise continue to set industry standards worldwide.



A large concrete bridge pier is being lifted by a crane over a river. Two workers are visible on a platform above the pier. The background shows a lush green forest and a body of water.

PROJECT “SERPUKHOV BRIDGE”

Works were carried out from the barge with the help of 2 crawler cranes (lifting capacity 150 tons and 250 tons respectively) and 2 tower cranes

12 METERS

above the Oka river level

518 METERS

bridge length

16 METERS

bridge width

DISMANTLING

of four channel spans and pillars
up to the water level



INDUSTRIAL DEMOLITION IN OPERATIONAL FACILITIES

Every year our company successfully implements dozens of projects at the facilities of metallurgical, chemical, pulp and paper and other industries.

Our specialists quickly and carefully remove massive monolithic foundations and structures both during tight production shutdowns and in the conditions of operating workshops.

PROJECT DISMANTLING OF PAPER FACTORY NO.1

431 910 M³

construction volume

~15 000 TONS

dismantling of steel structures

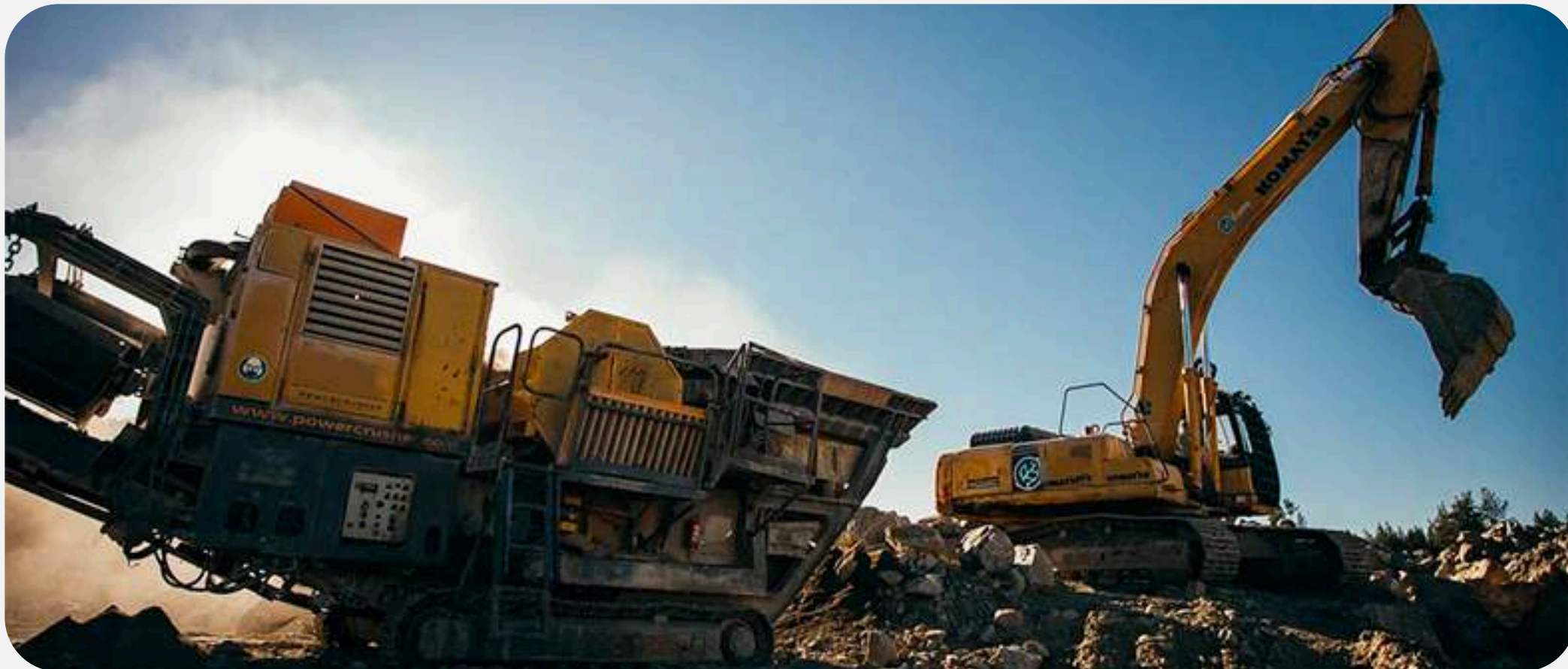
**MORE THAN
10 UNITS**

number of machinery at the site

**115 000 M³,
98%**

volume of waste and percentage
of recycled waste





RECYCLING AND PROCESSING

Saves the customer money on transportation of waste, purchase of construction materials and waste disposal fees.

Production of secondary crushed stone from construction waste using a mobile crushing and sorting complex. Used directly at the dismantling site, without the need for waste transportation.

The project budget reduces waste removal costs, completely eliminates payments for waste disposal at specialized landfills, and minimizes environmental fees.





(Gas Discharge System)

An GDS is a device that uses the energy of compressed gas (most often compressed air) to break rocks and other materials. The gas is delivered under high pressure into a borehole (hole) in the material, causing it to break by fracturing or splitting.

Application in dismantling:

- dismantling of reinforced concrete and stone structures, breaking of rock during constructing tunnels and other underground structures.
- in special cases for dismantling concrete structures when other techniques are not suitable.

GDS allows to destroy very strong materials, and also gives the possibility of more precise control of the destruction process in comparison with blasting. Not the least important is the absence of combustion products and harmful emissions (compared to blasting).



PROJECT: BAKERY PRODUCTS PLANT

TECHNOLOGY: CONTROLLED
DEMOLITION OF THE BUILDING
USING GDS TECHNOLOGY

471 825 M³

construction volume

**OVER
56 000 M³
99% RECYCLED**

waste volume and percentage
of recycled waste

Works were constrained by the
need to preserve nearby low-rise
buildings.





LASER DEMOLITION WORKS

A method of destroying and removing building materials using high-intensity laser beams.

The laser beam heats the material to the point of melting or vaporization, which leads to its destruction or cutting with high precision.

Laser work is used to remove reinforced concrete structures, metal structures, and masonry with high precision and minimal damage to surrounding objects.

The laser is irreplaceable in the dismantling of hard-to-reach places, and it is also possible to dismantle complex and valuable structures with minimal damage.

The background image shows a demolition site. On the right, a tall brick wall is being cut by a laser, with a bright orange glow visible at the point of contact. On the left, there is a lower brick wall and some green foliage. The sky is overcast.

PROJECT: BAKERY PRODUCTS PLANT

"Anasar" Group of Companies was the first in the world to use the technology of remote separation laser cutting at a liquidated enterprise.

From a distance of 90 meters the laser beam easily cut metal structures with a thick cross-section.

Safety of the technology: during remote laser cutting, the personnel is at a distance of 250 meters from the project.

DEMOLITION OF INFRASTRUCTURAL OBJECTS



“Arasar” Group of Companies has carried out numerous dismantling works on major infrastructure projects worldwide.

The company’s landmark dismantling and reconstruction projects include:

- Iconic historical landmarks;
- Complex industrial structures;
- High-rise and large-scale infrastructure projects.

Arasar’s dedication to precision and innovation ensures successful outcomes for even the most challenging projects globally.



PROJECT: GRAND STONE BRIDGE OVER THE DANUBE RIVER

The organization of repair works provides for their implementation in two consecutive stages:

1st stage - a set of repair works on the lower side of the bridge.

2nd stage - a set of repair works on the upper side of the bridge.

479,7 METERS

the length of the reconstructed bridge

COMPLETE REPLACEMENT

complete replacement of the frame and parapet of the river pillars using diamond cutting equipment

DIFFICULTIES

- Carrying out the works in a built-up part of the city;
- Intense traffic of city transport and pedestrians in the immediate vicinity;



ECOLOGY **AND DESIGN**

Environmental support and design is an integral part of building dismantling works. As a professional contractor, "Arasar" performs the whole range of works on project support.

In accordance with environmental legislation, when performing dismantling works, the waste generator is obliged to:

- conduct a laboratory examination of the waste;
- assess possible damage to the environment;
- develop a waste management plan and prepare waste passports;
- convert the maximum amount of waste into secondary raw materials;
- compile reporting documentation;
- calculate and make payment for negative environmental impact upon completion of the work.

RECONSTRUCTION OF THE PM-11.

DIAMOND CUTTING
AND MECHANIZED DISMANTLING



Dismantled reinforced
concrete structures

~13 000M³
solid body



ARASAR

High-Tech Demolition Solutions



arasarinternational.ae