



# ABOUT ENTECH

Qualifications & Experience



# ENTECH



# ABOUT ENTECH

Qatar's economic, environmental, and social development goals demand world-class engineering, construction, and technology services.

EnTech, an American engineering and technology consulting firm, is bringing its record of integrity, partnership, and innovation to Qatar. By providing targeted advisory services, best-in-class digital capabilities, and extensive knowledge sharing opportunities, EnTech will partner with Qatari clients to support key development goals in line with Qatar Vision 2030.

EnTech has experience in multitude of projects in New York City and across the northeastern United States, including airport redevelopments, bridge and roadway replacements, subway and rail network expansions, and upgrades to water and sewer networks. We are a trusted partner to numerous public and private clients, and our work has won awards from major engineering organizations.

EnTech looks forward to partnering with Qatari clients to share strategies for innovation, sustainability, and knowledge development. Through outstanding construction management and digital services, we can help critical infrastructure, sustainability, economic, and environmental development programs succeed.

ENTECH





# CORE SERVICES

## CM & Advisory

PM/CM  
REI  
Construction Claims Resolution  
Permit Expediting  
Design-Build  
Quality & Safety



ENTECH

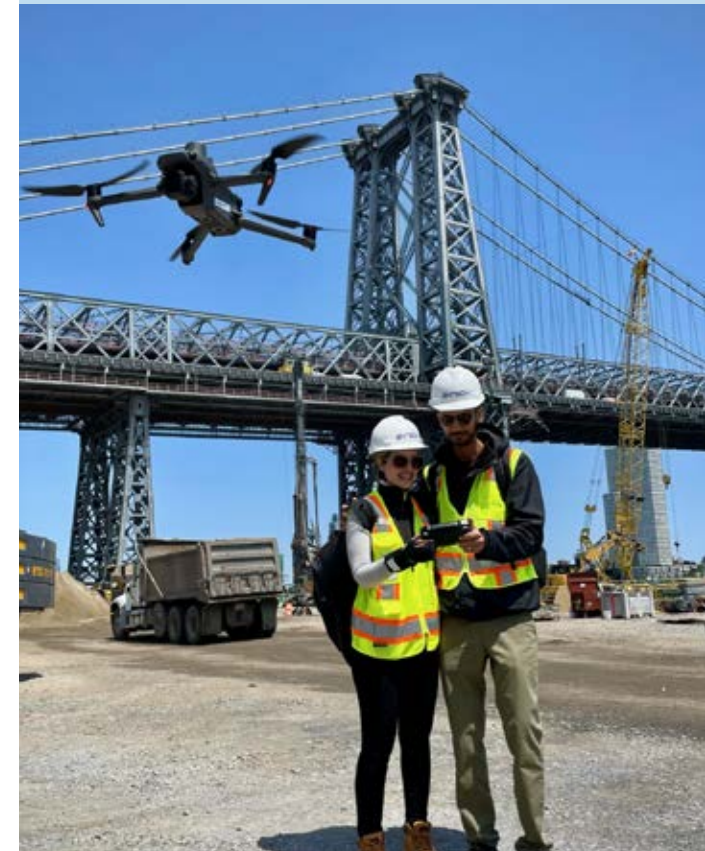
## Engineering & Design

Civil  
Traffic  
Geotechnical  
Geo-Instrumentation & Structural  
Health Monitoring  
MEP  
Structural



## Digital Delivery

Reality Capture  
BIM & VDC  
AI, Data Intelligence & Automation  
Information Technology  
Digital Innovation Strategy



## Environmental

Permitting & Regulatory Compliance  
Environmental Assessment and  
Due Diligence  
Remedial Investigation / Design  
Hazmat Investigation & Abatement Services





# CM & ADVISORY

## Project Management / Construction Management:

EnTech provides comprehensive oversight of projects from the initial planning through project closeout. We coordinate with stakeholders to mitigate risks and help the project meet its scope, schedule, and budget objectives.



## Resident Engineering Inspection:

Our Resident Engineers serve as on-site representatives, delivering daily inspections, quality assurance, and technical coordination to ensure contractors meet all plans, specifications, and regulatory requirements.



## Construction Claims Resolution:

With a team of expert construction professionals, EnTech supports expert analysis and negotiation to resolve disputes, manage change orders, and mitigate claims.



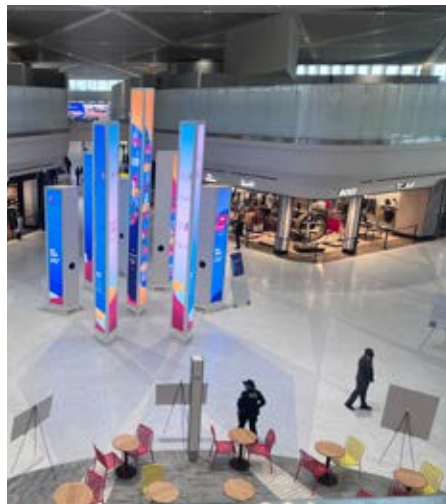
## Permit Expediting:

EnTech has been working with New York State and City agencies for over 25 years. Our understanding of their requirements and processes allows us to secure construction permits, meet regulatory compliance, and reduce administrative delays.



## Design-Build:

EnTech works with contractors on Design-Build projects, a unique delivery approach that aligns design and construction teams under one contract to streamline schedules, reduce cost overruns, and improve collaboration.



## Quality & Safety:

EnTech can implement quality assurance/quality control (QA/QC) programs and safety management systems to uphold standards of construction and worker protection.



# ENGINEERING & DESIGN

## MEP Engineering:

EnTech's MEP design team offers integrated solutions for a building's essential systems, including HVAC, electrical, plumbing, and fire protection. Our services also encompass building commissioning and retro-commissioning, QA/QC, and condition assessment services to ensure optimal performance, efficiency, safety, and compliance with relevant codes and standards.



## Traffic Engineering:

Our traffic engineering team evaluates and designs transportation systems to optimize traffic flow, safety, and accessibility for all users. They analyze data, create roadway and intersection plans, and implement strategies like signal timing, lane configuration, and signage to ensure efficient and safe movement within a project site.



## Geotechnical Engineering:

EnTech's geotechnical and geo-instrumentation team is comprised of highly-talented engineers including geotechnical engineers, soil and boring experts, professional engineers, and environmental scientists with extensive project experience.



## Civil, Site, and Structural Engineering:

EnTech's site engineering department includes a team of engineers, designers, and draft persons who are well experienced in all phases of site development and in-person condition assessments of structural elements.



## Structural Health Monitoring:

Our team deploys sensor-based systems and digital tools to monitor the structural health of infrastructure in real time. This helps to support proactive maintenance and keep the public safe through early detection of stress, vibration, or material degradation.

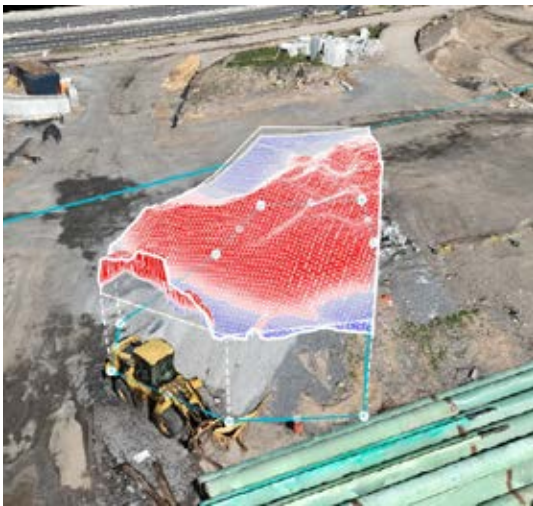




# DIGITAL DELIVERY

## BIM / VDC:

Unlock smarter design and streamlined construction with our Building Information Modeling (BIM) and Virtual Design & Construction (VDC) services. We integrate advanced 3D modeling with project coordination tools to enhance accuracy, reduce risk, and improve collaboration from planning through execution.



## Reality Capture:

Bring real-world conditions into the digital realm with precision. Our Reality Capture services use cutting-edge LiDAR, photogrammetry, and 3D scanning technologies to create accurate, high-resolution models that accelerate decision-making and eliminate costly surprises.



## AI, Data Intelligence, and Automation:

Transform your operations with intelligent automation and actionable insights. EnTech harnesses AI, machine learning, and data science to streamline workflows, uncover trends, and drive smarter business strategies—faster and more efficiently than ever.



## Information Technology:

Power your business with resilient and scalable IT solutions. From infrastructure design to cybersecurity and cloud integrations, our IT services keep your systems secure, connected, and optimized for performance—so your team can stay focused on what matters most.



## Digital Innovation Strategy:

Stay ahead of disruption with a bold digital roadmap. Our Digital Innovation Strategy service aligns emerging technologies with business goals, helping public and private clients reimagine processes, foster innovation, and build future-ready solutions that drive lasting value.



# ENVIRONMENTAL

## Permitting & Regulatory Compliance:

Our team can investigate and determine the environmental permits and approvals required for our clients' projects. We will communicate with the regulatory agencies, schedule and attend meetings, and prepare and submit all permit applications.

## Environmental Assessment and Due Diligence:

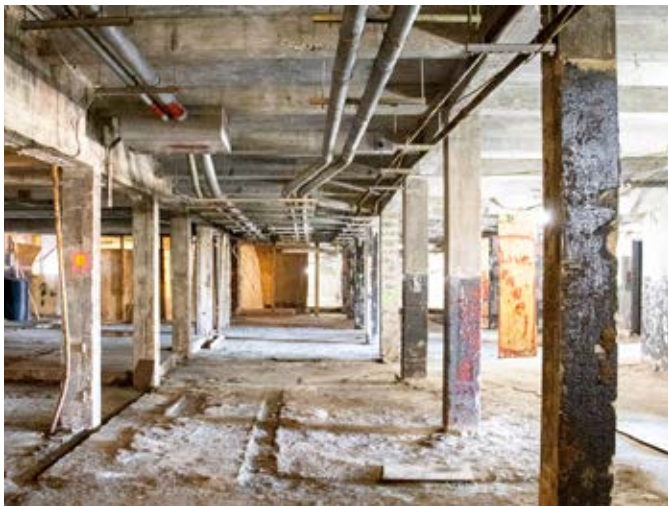
We complete environmental reviews, site investigations, and regulatory compliance checks to identify potential risks and liabilities. This supports informed decision-making for project planning, permitting, and acquisition.

## Remedial Investigation / Design:

EnTech leads site investigations to identify contaminations, assess risks, and develop cost-effective remedial designs that comply with regulatory requirements and support long-term site reuse and resilience.

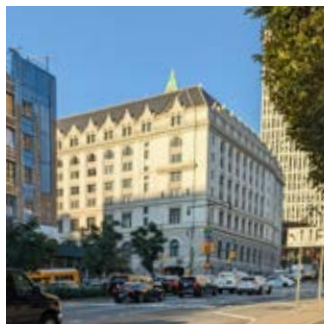
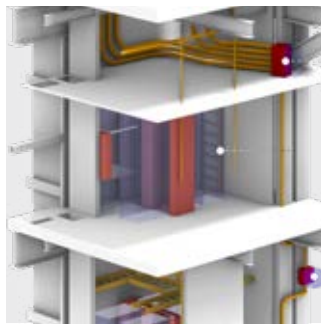
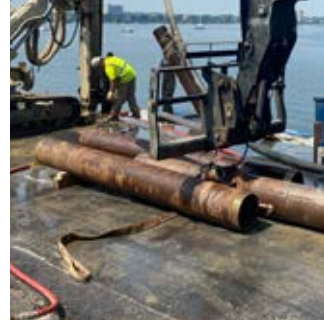
## Hazmat Investigation & Abatement Services:

Our team performs asbestos, lead, PCB, mold, and Universal Waste Surveys to identify potential hazardous materials that may be impacted during project activities. We also provide cost estimates for abatement and drawings with markups for proper delineation of identified hazardous materials.

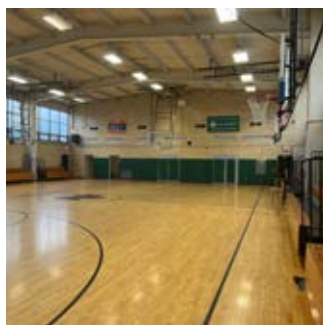




# DIVERSE EXPERIENCE



ENTECH





# Notable Projects



ENTECH

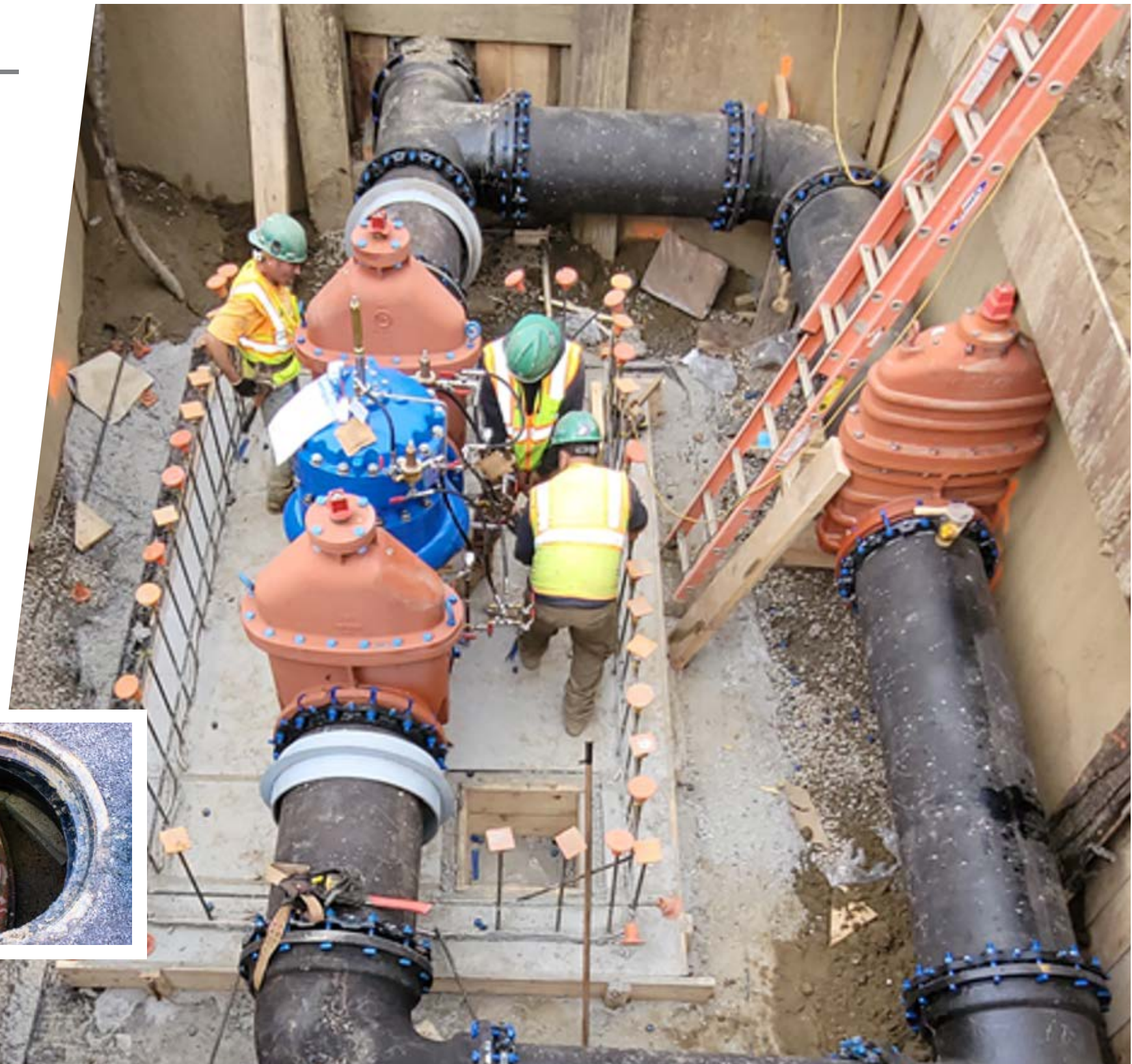


# Installation of Distribution Water Mains – Resident Engineering Inspection (REI)

NYCDDC | Queens & Bronx, NY

## SERVICES PROVIDED:

- > Coordinating/monitoring construction
- > Coordinated extensively with the NYCDEP for complex water shutdowns
- > Community outreach



ENTECH



# Shore Road Reconstruction and Emergency Stabilization – REI

NYCDDC | Queens, NY

## SERVICES PROVIDED:

- > REI for a highly successful, two-phase project to rehabilitate Shore Road
- > Construction inspection, management, coordination, and administration throughout both phases



ENTECH

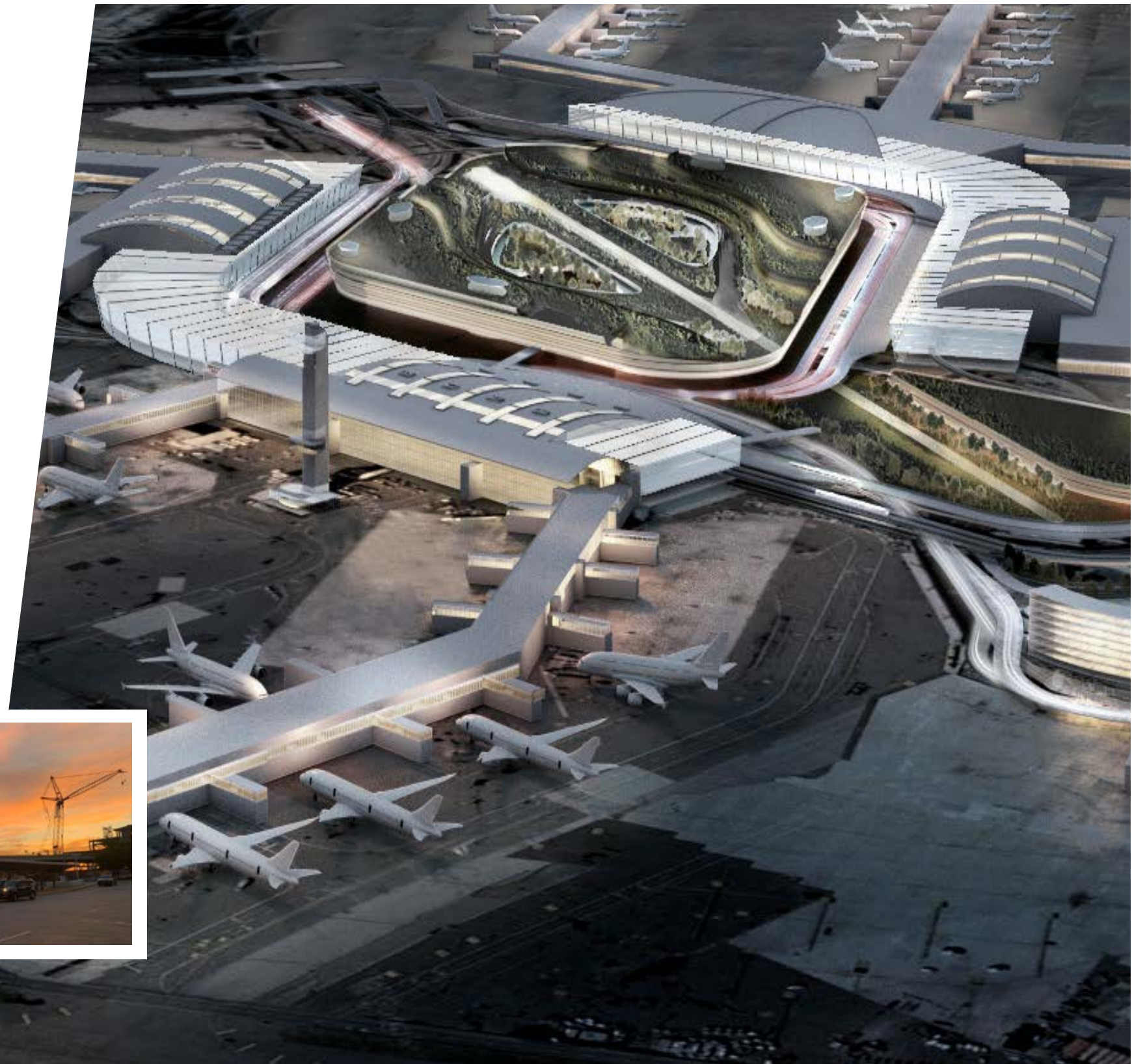


# JFK Terminal 6 Redevelopment Design-Build

PANYNJ | Queens, NY

## SERVICES PROVIDED:

- > Geotechnical instrumentation and monitoring
- > Traffic engineering and analysis
- > Soil erosion and sediment control plans, stormwater pollution prevention plan (SWPPP), developing pavement design
- > Laser Scanning



ENTECH



# JFK Airport Terminal 4 Redevelopment, CM

PANYNJ & Delta Air Lines | Queens, NY

## SERVICES PROVIDED:

- > Construction management and owner's representation
- > Staff augmentation
- > MEP Superintendence
- > Coordination with other JFK projects



ENTECH

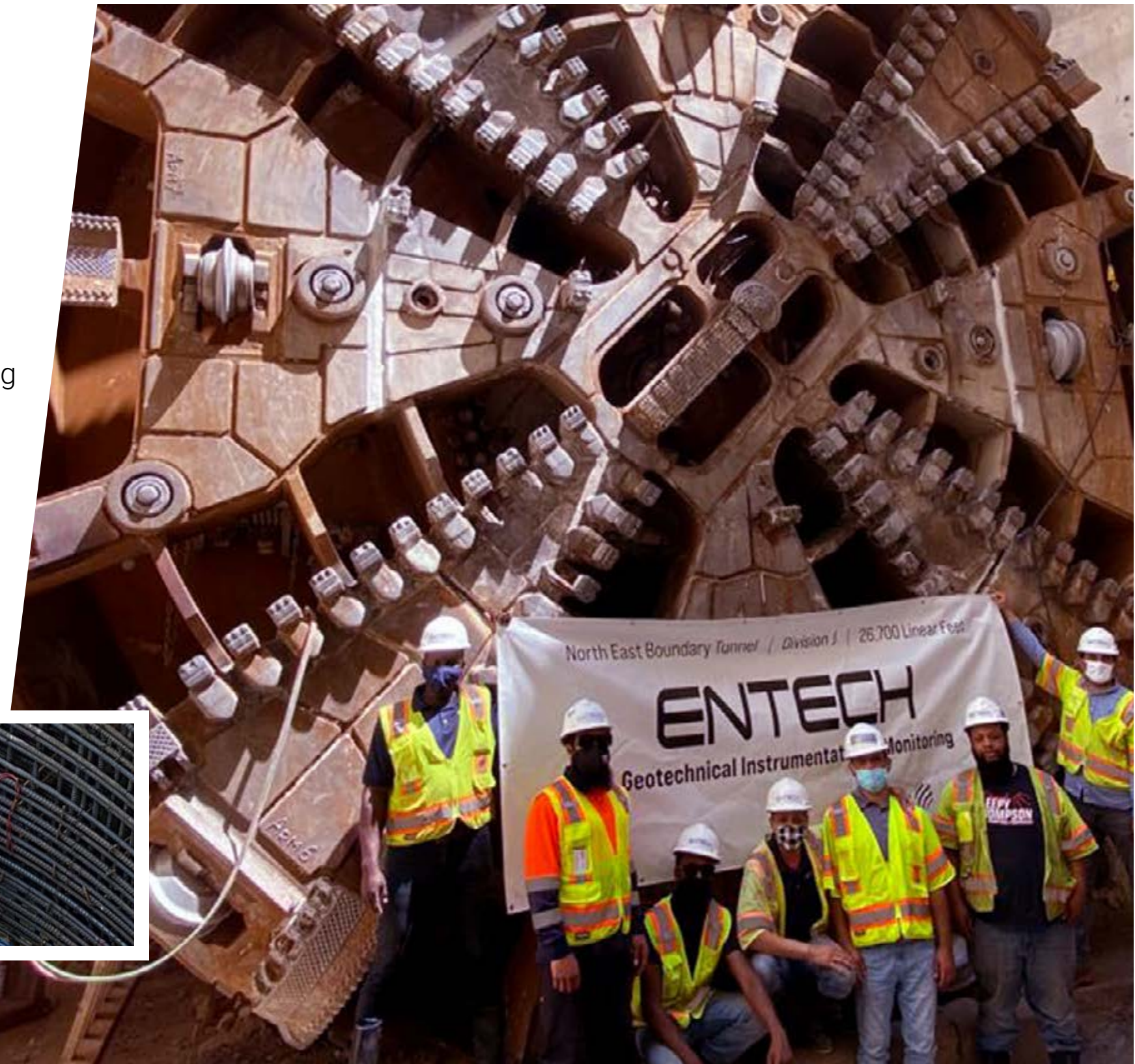
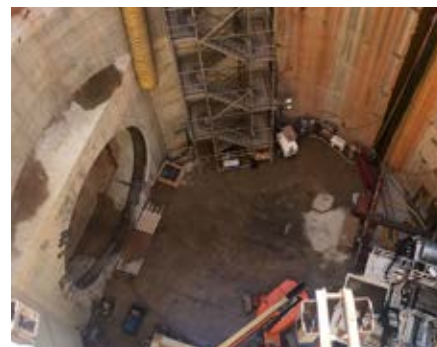


# Northeast Boundary Tunnel – DC Water Clean Rivers Act

DC Water | Washington, DC

## SERVICES PROVIDED:

- > Noise and Vibration Monitoring, Optical Survey Monitoring
- > Instrumentation and Monitoring for tunnel and project sites
- > Automated Data Acquisition System
- > Installation and Decommissioning Permitting
- > MPT Implementation, As-Built Survey



ENTECH

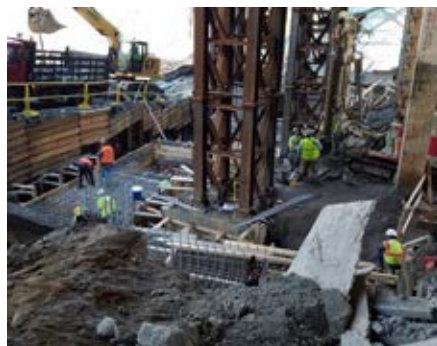


# Henry Hudson Bridge Toll Plazas and Southbound Approach Reconstruction CA/CI

MTA-TBTA | Bronx and Manhattan, NY

## SERVICES PROVIDED:

- > Construction administration and construction inspection
- > H&S oversight, QA, environmental compliance, document control, scheduling, inspection and testing
- > Completed on time and on budget



ENTECH

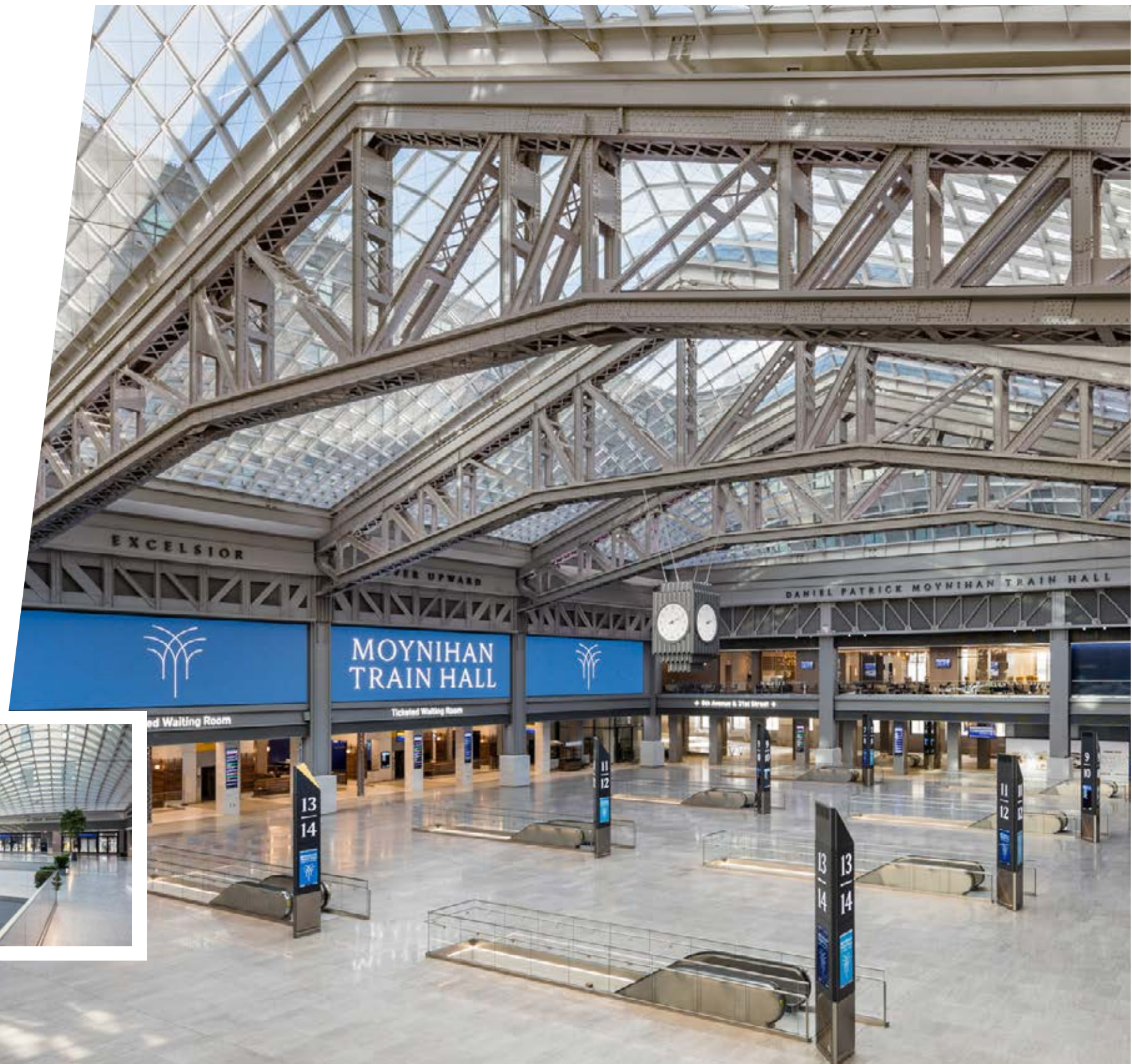


# Moynihan Train Hall Resident Engineering Inspection

MTA-LIRR | Manhattan, NY

## SERVICES PROVIDED:

- > Coordinated both railway infrastructure and vertical construction
- > Review of inspection narratives
- > Tracking of contractor progress, payments and submittals



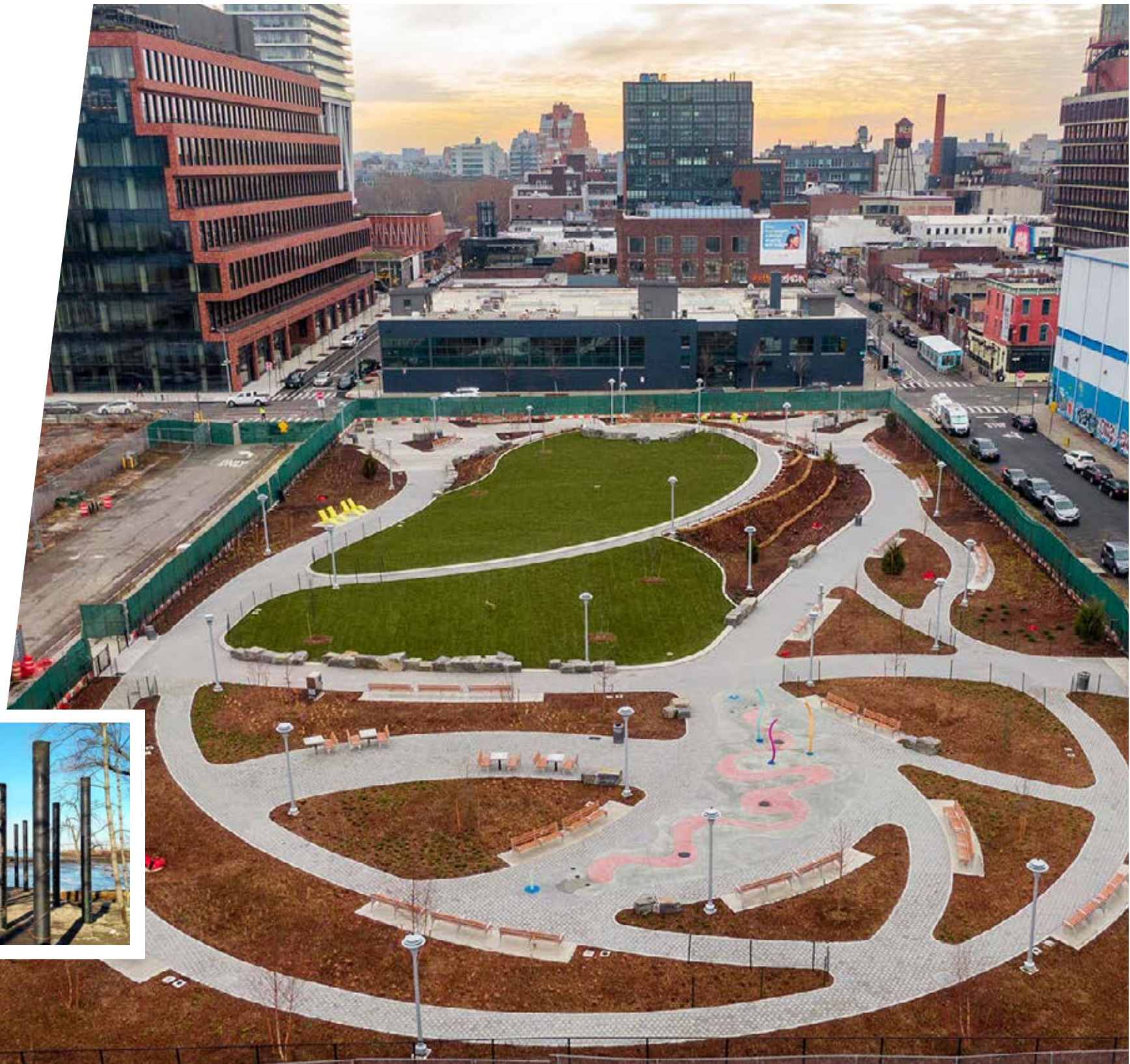


# On-Call CM and Inspection Services for Construction Projects

NYCDPR | Various Locations, New York

## SERVICES PROVIDED:

- > CM/inspection services for 30+ parks
- > Environmental services
- > Work closely with NYCDPR representatives



ENTECH



# RFK Bridge East River Suspension Spans - Wind Retrofit and Structural Rehabilitation

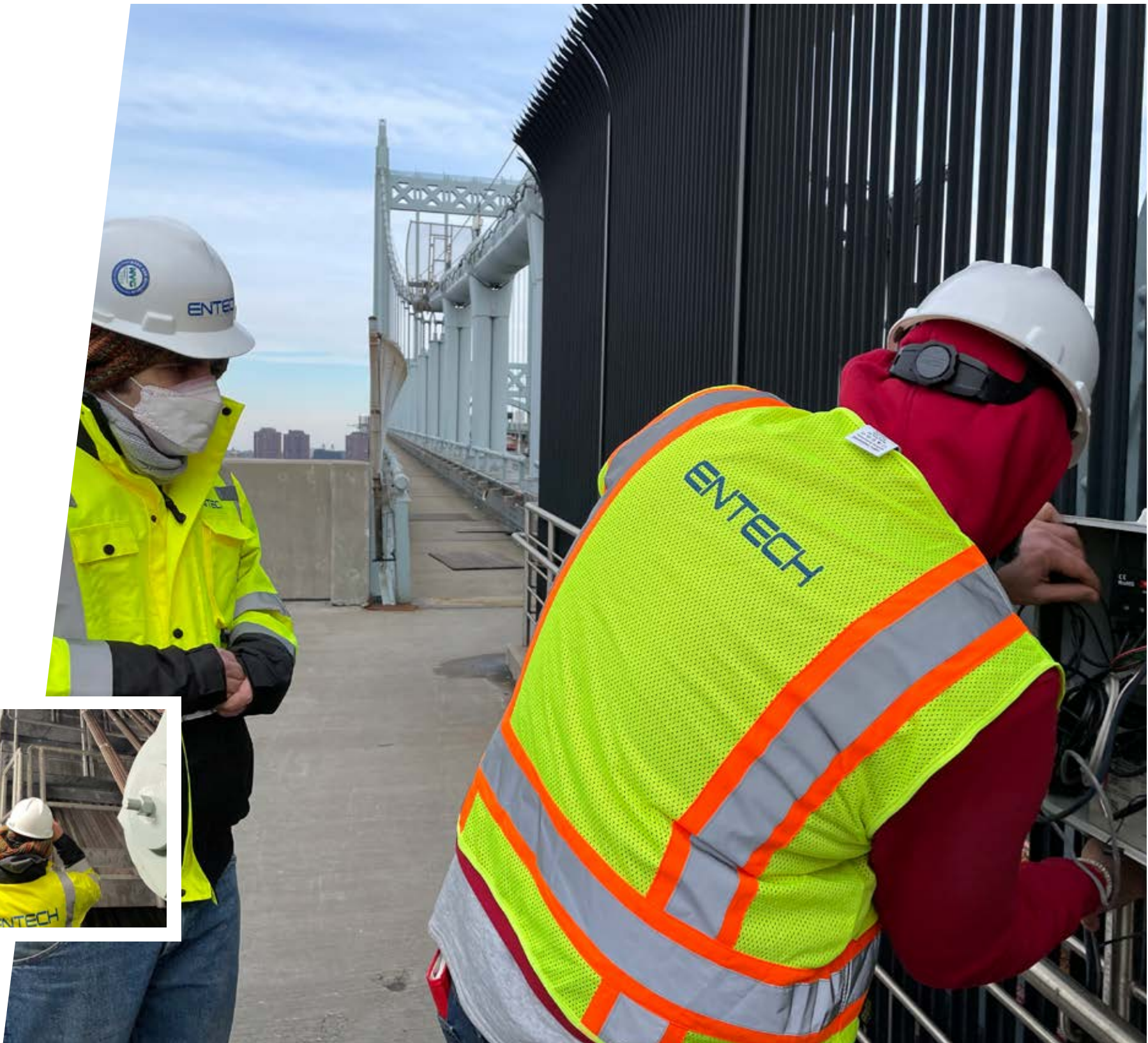
MTA-TBTA | New York, NY

## SERVICES PROVIDED:

- > Geotech instrumentation – structural health monitoring
- > Maintaining data logger, cabling, and sensor system
- > Operating and maintaining instrumentation equipment on-site



ENTECH





# Bronx Museum of the Arts Comprehensive Lobby and Entrance Upgrades

NYCEDC | Bronx, NY

## SERVICES PROVIDED:

- > Civil & Structural design
- > Subsurface investigation & underpinning design
- > Environmental engineering



ENTECH



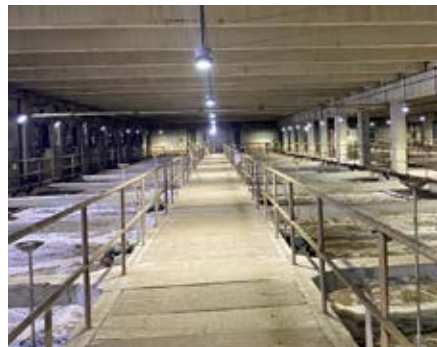


# NYC Wastewater Resiliency Program Construction Management

NYCDEP | Citywide, New York

## SERVICES PROVIDED:

- > CM and inspection at six WRRFs
- > Civil, mechanical, and electrical inspection for critical upgrades



ENTECH

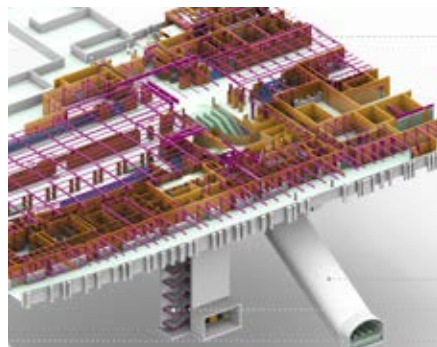


# East Side Access – BIM Services

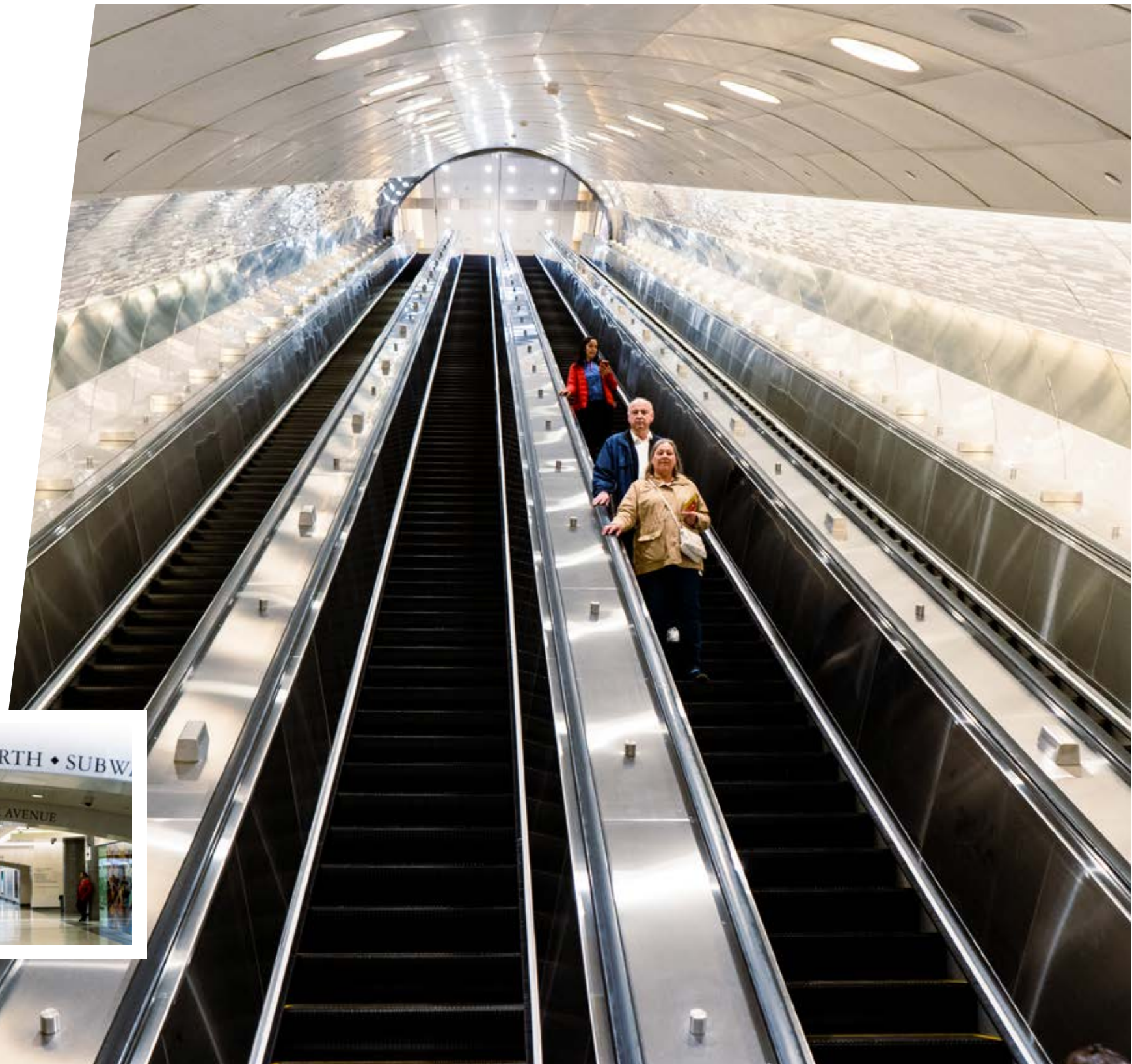
MTA C&D | New York, NY

## SERVICES PROVIDED:

- > 3D modeling and coordination
- > As-built
- > Drawing production
- > Structural design & analysis



ENTECH





# LaGuardia Airport Redevelopment On-Call Traffic Engineering Services

PANYNJ | Queens, NY

## SERVICES PROVIDED:

- > Design of intersection improvements at the Central Terminal Building (CTB) area
- > Solutions to reduce queuing at certain locations
- > Data collection, capacity analysis, review of third-party traffic analysis and reports, and the preparation of client reports



ENTECH





# Willis Avenue Bridge Replacement REI

NYCDOT | Bronx and Manhattan, NY

## SERVICES PROVIDED:

- > Resident engineering inspection (REI) services for the project including the Resident Engineer, chief inspector, construction inspectors, and office engineers
- > Contributed to significant cost savings by recommending and endorsing innovative solutions to multiple project challenges





# Queensboro Bridge Upper Roadway Replacement REI

NYCDOT | Manhattan and Queens, NY

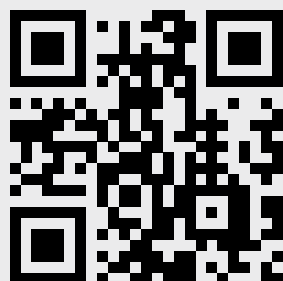
## SERVICES PROVIDED:

- > Resident engineering inspection services for installing lightweight orthotropic decking to reduce the overall dead load and extend the service life of the bridge
- > Monitoring contractor operations and performing daily inspections for quality, safety, and compliance with contract documents and specifications



ENTECH





Please scan QR code  
to visit our website  
and learn more.

17 State St, 36th Fl, New York, NY 10004  
(646) 722-0000  
[www.entech.nyc](http://www.entech.nyc)



# ENTECH