





Leading suppliers for construction chemicals, Waterproofing products, Architectural finishing and solutions



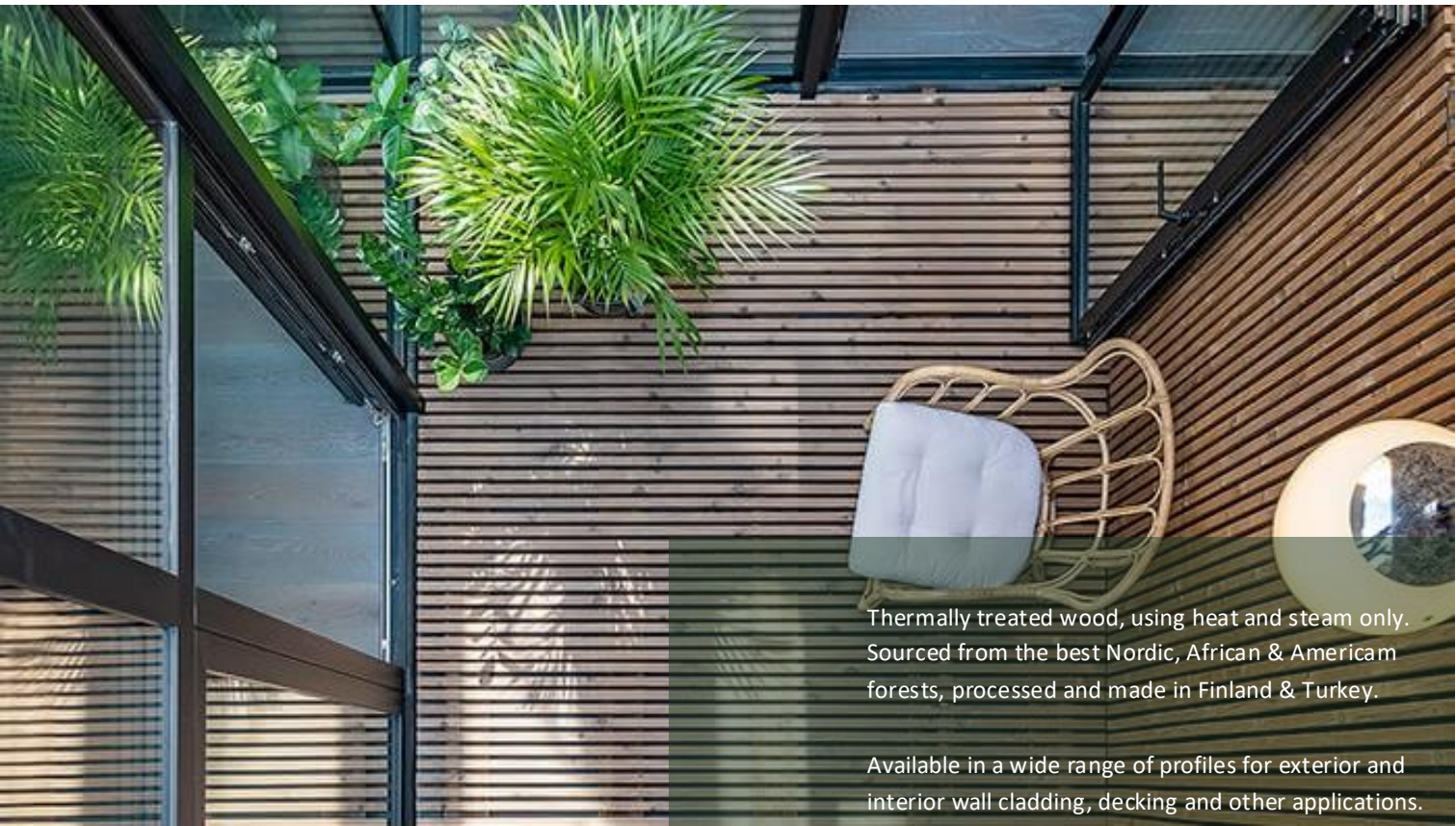
Since 1991



Since
2019

- مخصصة للمشاريع: خدماتنا تقدم حسب متطلبات مشاريع عملائنا المهندسين المعماريين، المصممين، ملاك المشاريع والمقاولين.
- نقدم الدعم الفني من مراحل التصميم الأولى خطوة بخطوة.
- نوفر مواد ذات جودة نوعية بمستندات داعمة لوصف المنتجات وجودتها، واختبارات المنتج والشهادات البيئية المطابقة لمواصفات أفضل المشاريع.
- ندعم في توصيف المشاريع، وتقديم المقترحات الفنية المناسبة، ودعم عملائنا في تسليم متطلبات المشاريع.
- نقدم الموارد المساعدة للمصممين (أفكار، صور، عينات، مكتبة 3D).
- دراسات المواصفات والكميات لتقديم أفضل العروض الفنية وعروض الأسعار.
- الدعم الفني اللازم لطرق التركيب الأفضل للمواد حسب حالة المشروع، وإيصالكم بأفضل المقاولين المتخصصين في مرحلة تركيب المواد المختلفة.

- Project base : our service is tailored to professional architects, designers, project owners and contractors needs.
- Technical support and recommendations from early design stage.
- Materials certificates, data sheets, info and high enviromental standards for best quality projects.
- Materials specifications support and technical proposals and submittals.
- Design support resources (inspirations, proposals, samples, 3D libraries).
- BOQ reviews & commercial studies.
- Installation manuals and specialized contractor recommendations.



Thermally treated wood, using heat and steam only.
Sourced from the best Nordic, African & American
forests, processed and made in Finland & Turkey.

Available in a wide range of profiles for exterior and
interior wall cladding, decking and other applications.



THERMOWOOD



Selection of the Best Raw Material

Best raw material, carefully chosen top grade swan timber (sound knotted) from eco certified **Scandinavian Pine & Spruce** forests, **American Ash** forests & **African Iroko**.

Thermal Modifications Process

Highly advanced and professioned thermal treatment process, using heat and steam only. Slightly vary for each type of timber. heating the wood permanently changes its chemical and physical qualities to be more durable & weather resistance

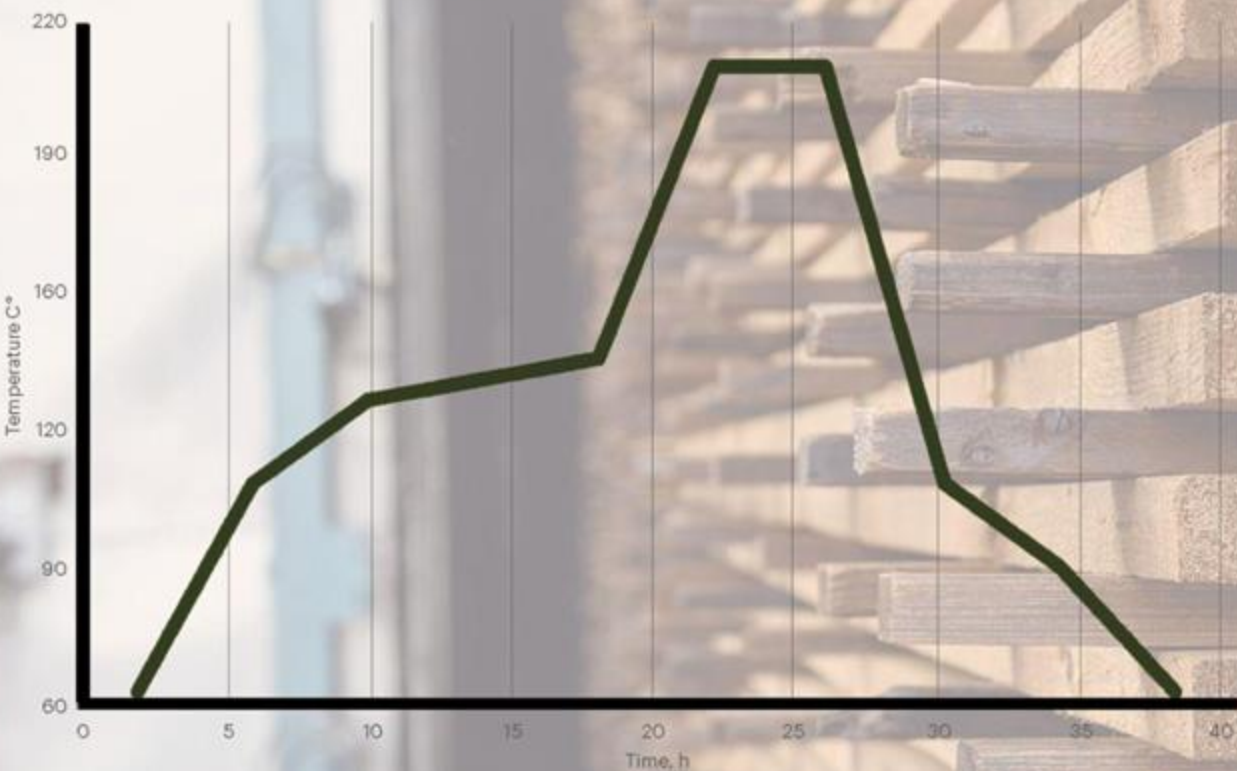


Quality & Certification

Quality certificates and labels



THERMO TREATMENT PROCESS



PHASE 1: SLOW TEMPERATURE RISE

- Material dried to a moisture content nearly zero
- Controlled temperature rise 190–212 C°
- Steam to prevent cracking and burning of the wood

PHASE 2: THERMAL MODIFICATION

- Chemical and physical changes mainly due to thermic degrading of hemicelluloses

PHASE 3: SLOW COOLING AND MOISTURE ADJUSTMENT

- Lowering the temperature by using water spray systems
- Adjusting the moisture content to the level 4–7%

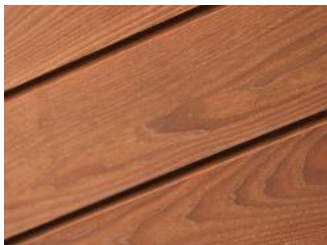


MATERIALLUX
Thermowood

THERMO ASH

HARDWOOD

- **HARDWOOD, SOURCE:
NORTH AMERICA**
- **THERMO-TREATMENT**
- **DARK BROWN COLOR**
- **HIGH NUMBER OF GRANIS,
WAVY ASTHETIC TEXTURE**
- **HIGH DURABILITY**
Brinell Hardness 30.5 N/mm².
- **595-629 kg/m³ DENSITY,
BARE HEAVY LOADS**



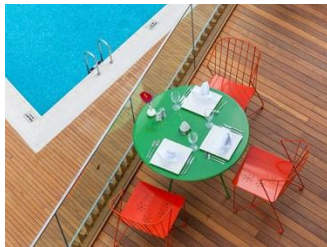
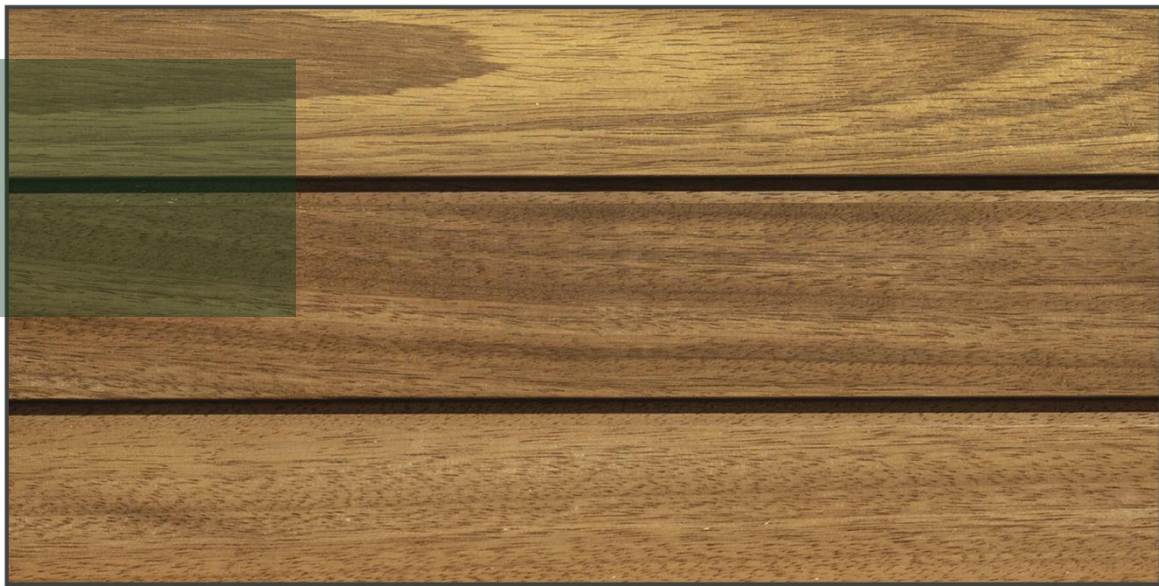


MATERIALUX
Thermowood

THERMO IROKO

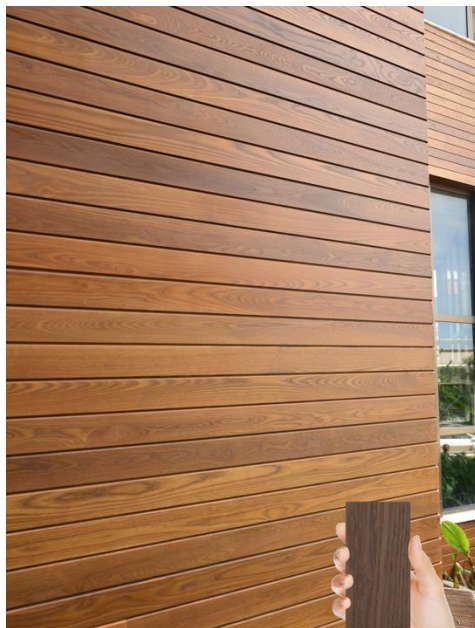
HARDWOOD

- **HARD WOOD, SOURCE: AFRICA**
- **THERMO-TREATMENT**
- **HONEY COLOR**
- **TOUGH & TENSE**
- **HIGH DURABILITY**
Brinell Hardness 40 N/mm².
- **576-650 kg/m³ DENSITY,**
BARE HEAVY LOADS



Product range (cladding profiles):

hardwood: Ash

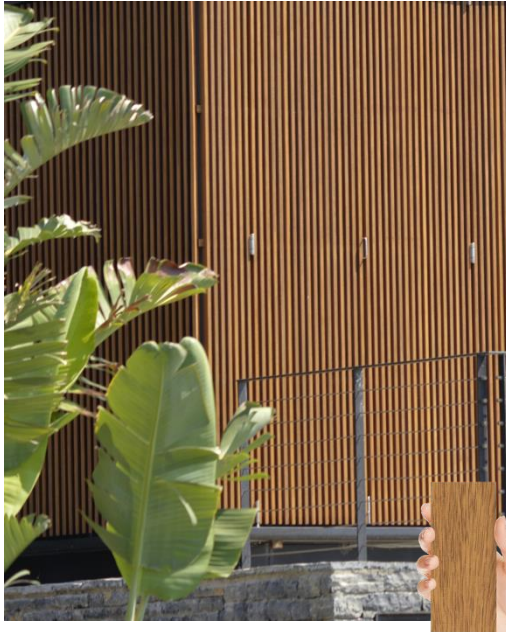


Iroko



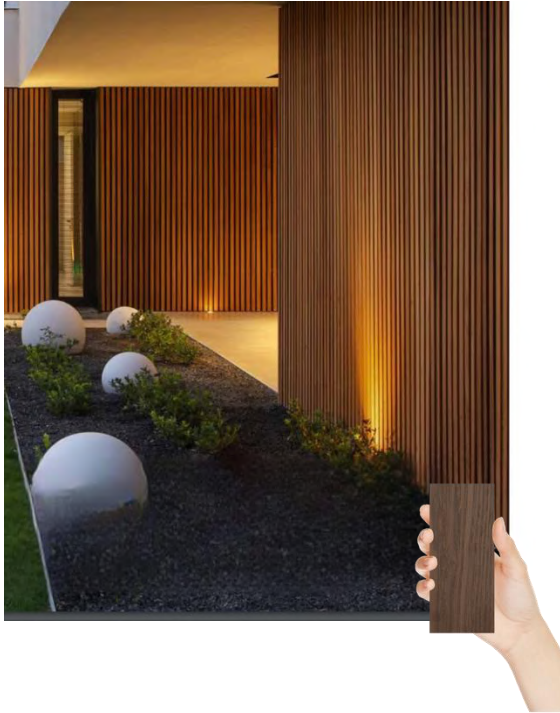
Product range (cladding profiles):

hardwood: Iroko



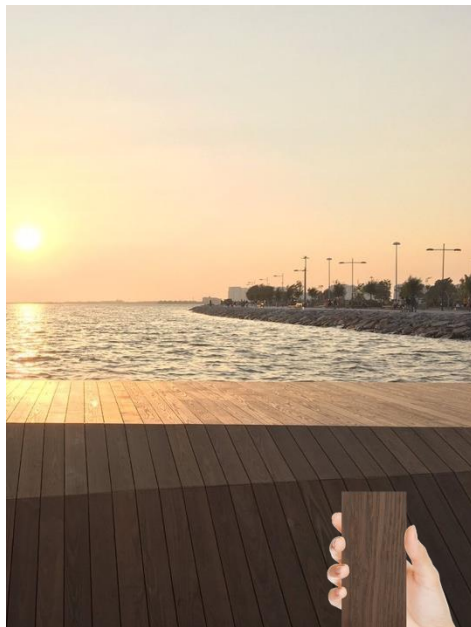
Product range (cladding profiles):

hardwood: Ash

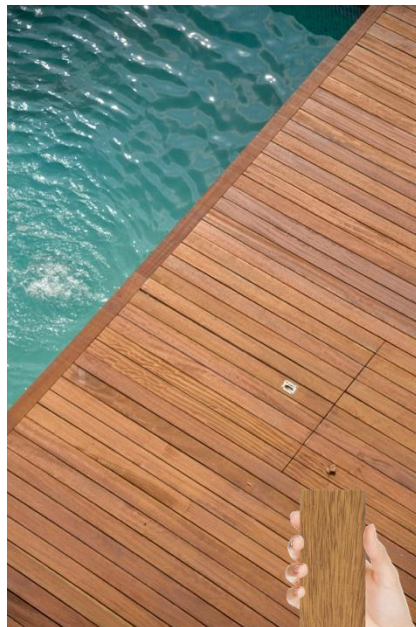


Product range (decking):

hardwood: Ash



Iroko



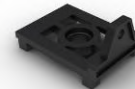
Fixing clips & systems



Pi -2 Clips



Pi Takoz



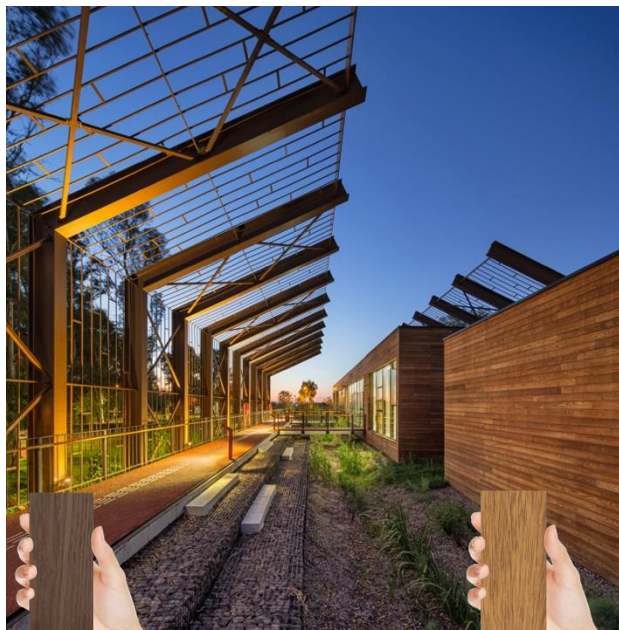
Grad Fixing System



Product range (frames / bearers / solar shades / posts profiles / beams): hardwood: ash & iroko

hardwood: Ash

Iroko



CLEAN

CLEAN

Variety of sizes

10-20-40 mm
X
40-90-13—15- mm

Product range (cladding profiles):

softwood: pine & spruce



PANEL SYSTEM
Interior / exterior cladding



Profile:
Panel system 19x117





Layer
interior / exterior cladding



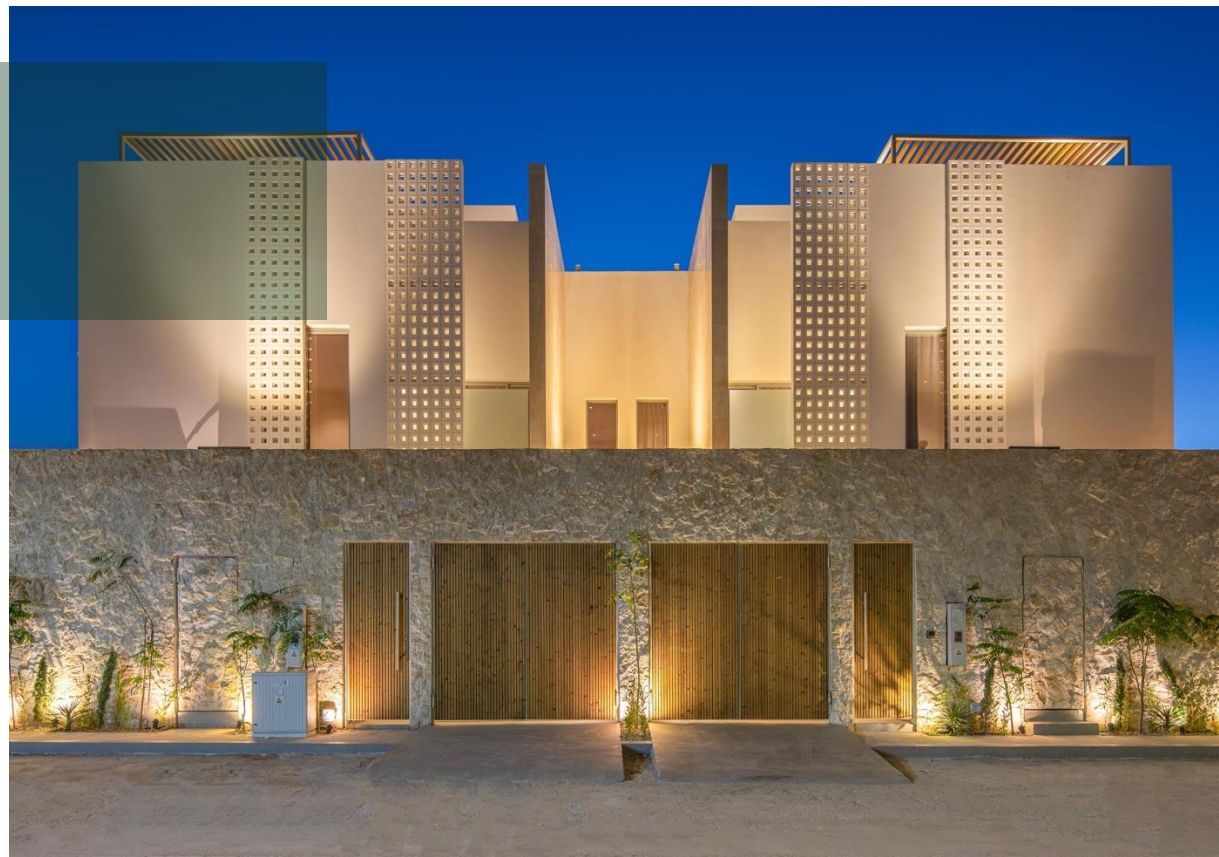
Profile:
Layer 19x188 brushed surface

TRIPLE SHADOW
interior / exterior cladding

Aura Villas
Riyadh, Saudi Arabia



Profile:
Triple Shadow 32 x 140



TRIPLE SHADOW
interior / exterior cladding

Ministry of Education – Auditorium
Alula, Saudi Arabia



Profile:
Triple Shadow 32 x 140



TRIPLE SHADOW
interior / exterior cladding

Private apartment
Riyadh, Saudi Arabia



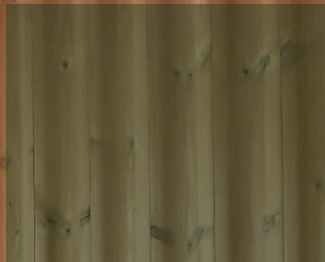
Profile:
Triple Shadow 32 x 140



FEMMA
interior / exterior cladding



Profile:
Femma 26 x 142



AALTO
interior / exterior cladding



Profile:
Aalto 32 x 140



AALTO
interior / exterior cladding

Almajdiah 139
Riyadh, Saudi Arabia



Profile:
Aalto 32 x 140

Product range (decking profiles):

softwood: pine & spruce

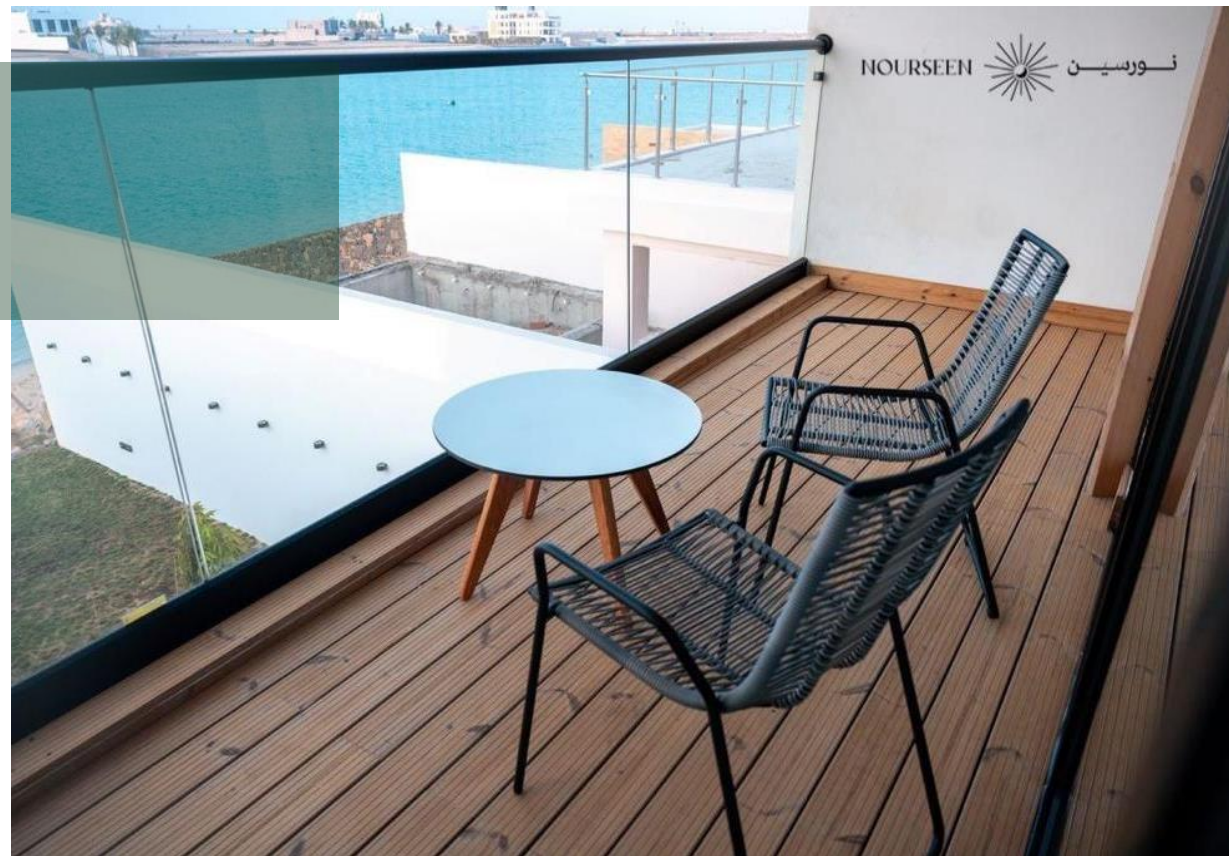


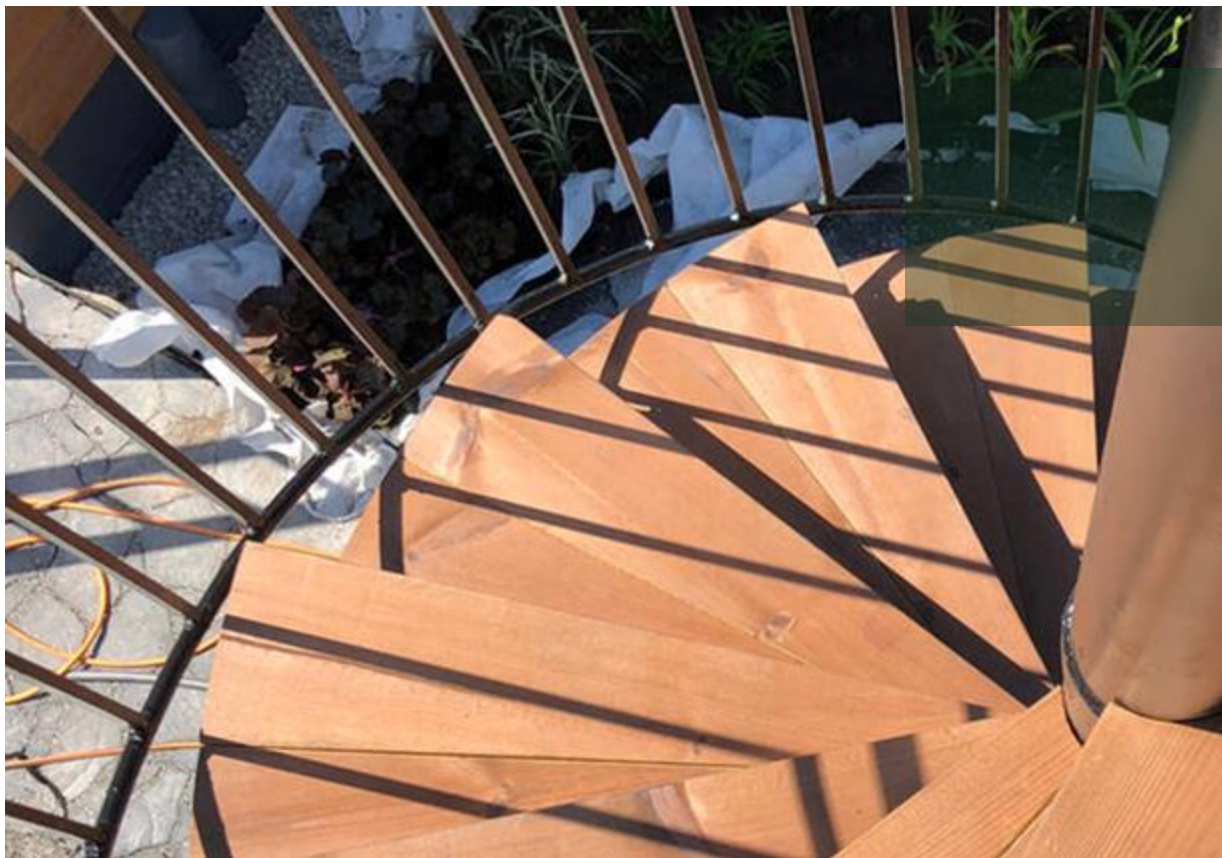
DECKING 2 PF2
Exterior decking

Nourseen Beach Villa
Jeddah, Saudi Arabia

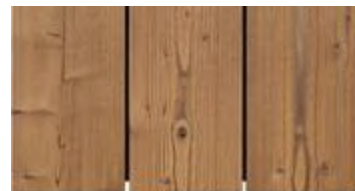


Profile:
Deck 2 Profix 2 26 x 117

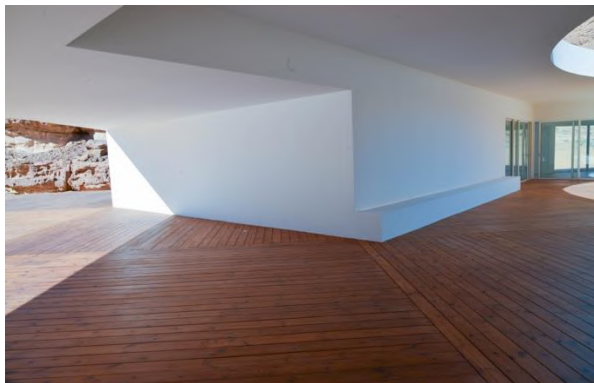




Decking PF 3
exterior decking

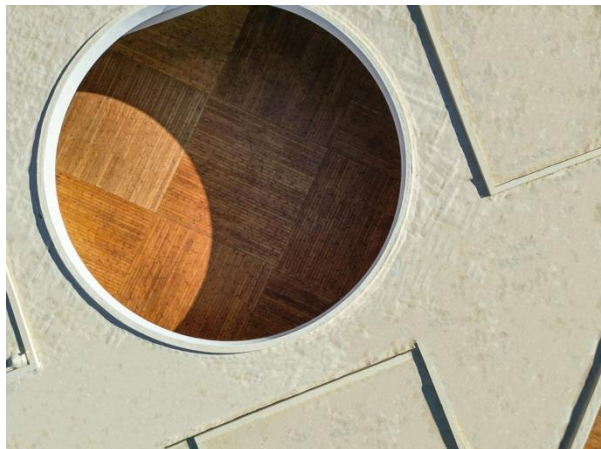


Profile:
SHP Profix 3 32 x 116 SAP
brushed surface



Decking SHP42x140
exterior decking

Dessert X Visitor's Centre
Alula, Saudi Arabia



Profile:
SHP 42 x 140

Product range (frames / bearers / solar shades / posts profiles / beams): softwood: pine & spruce



Batten profile
frames and bearers



Profile:
Post 140 x 140 - glued



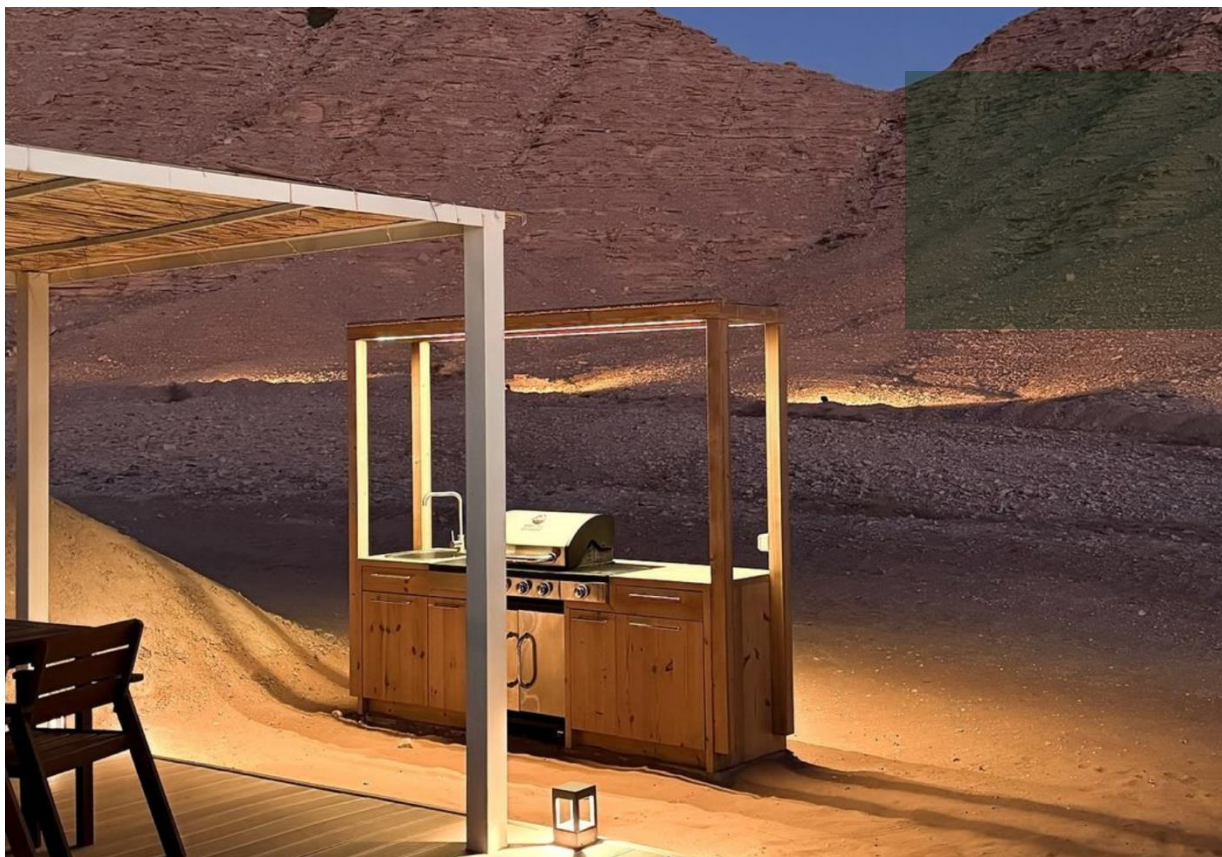


Batten profile
interior / exterior

Tomoor Alula
Alula, Saudi Arabia



Profile:
Post 88 x88 - glued



Batten profile
interior / exterior

Pauseaway resort bbq
Riyadh, Saudi Arabia

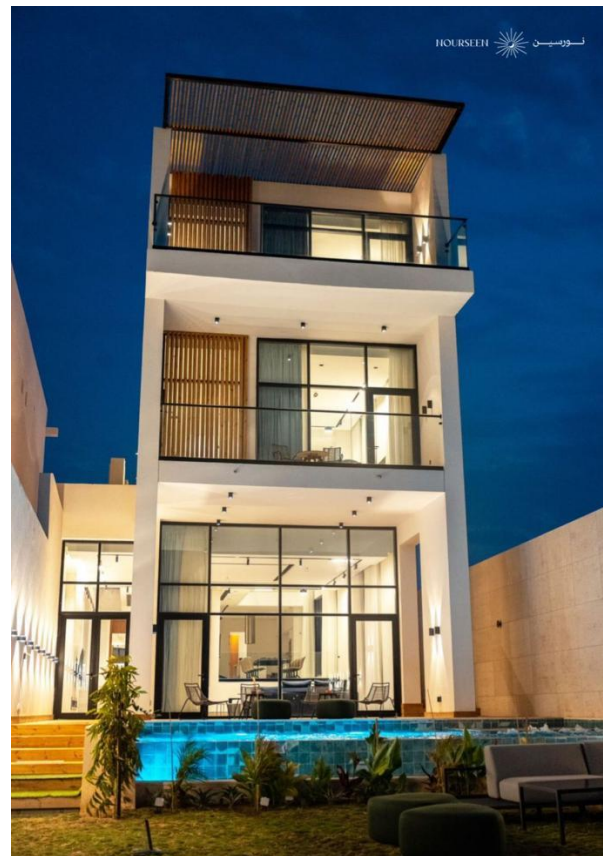


Profile:
Post 88 x88 - glued

Batten profile
interior / exterior



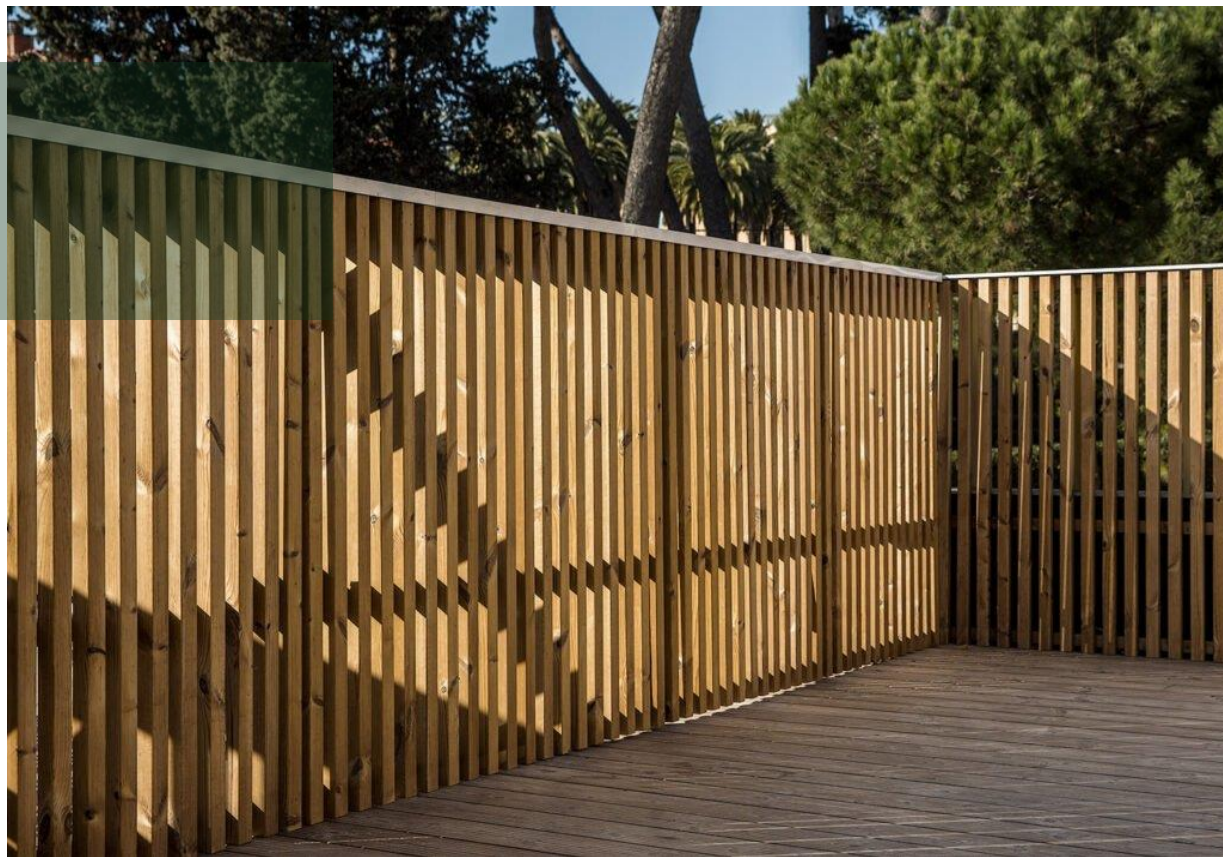
Profile:
SHP 42 x42



Batten profile
interior / exterior



Profile:
SHP 42 x 68



Batten profile
interior / exterior



Profile:
SHP 42 x 92





Batten profile
interior / exterior

Dessert signage
Dubai, UAE



Profile:
SHP 40 x 185



Batten profile
interior / exterior



Profile:
SSS 26 x 68

Batten profile
interior / exterior



Profile:
SHP 42 x 140



Batten profile
interior / exterior

Artwork
Riyadh, Saudi Arabia



Profile:
SHP 40x185



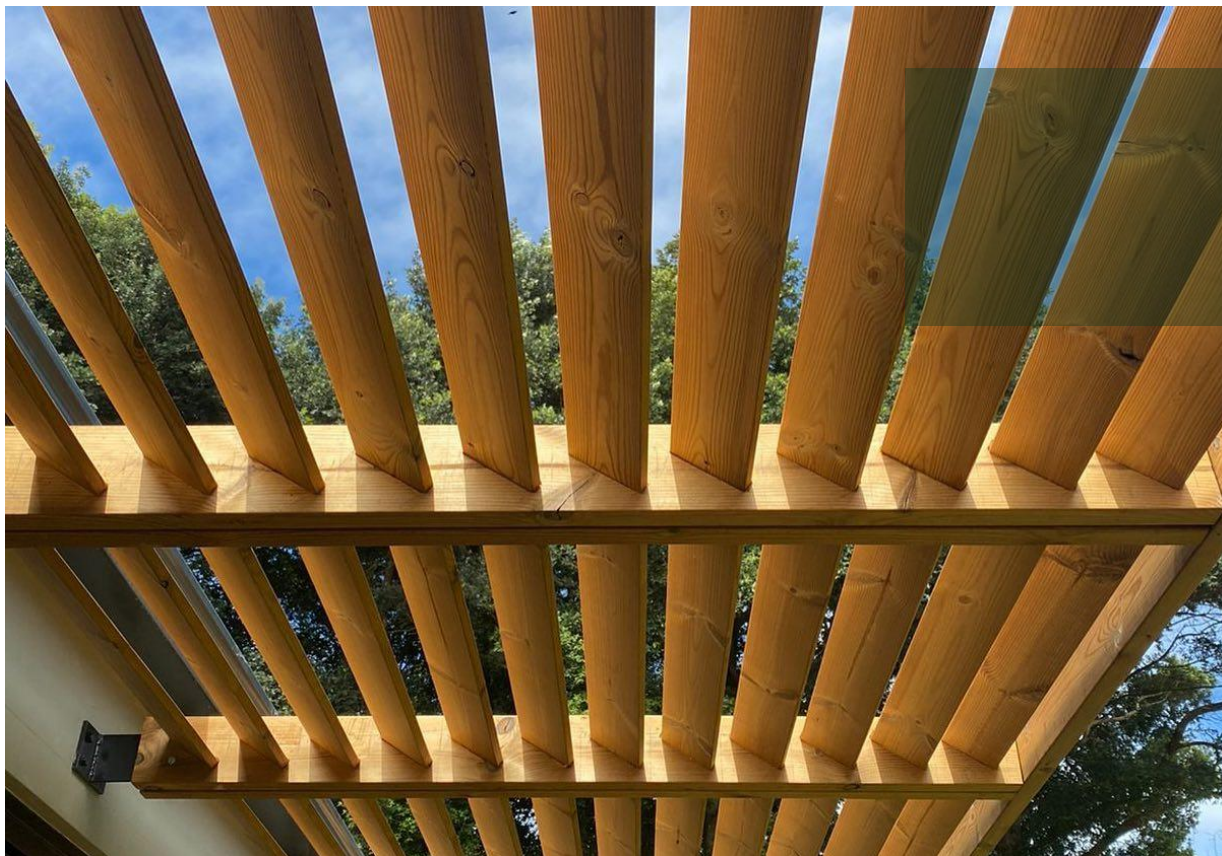
Batten profile
interior / exterior

Artwork – Alwaal Albarri Cafe
Riyadh, Saudi Arabia



Profile:
SHP 40x185





Batten profile
interior / exterior



Profile:
SHP 19 x 140



Batten profile
interior / exterior

Private Villa Pool Terrace
Jeddah, UAE



Profile:
SHP 19 x 140

Thank You

MATERIALUX

6223 Ahmad Al Attas, Al Zahra, Jeddah 23521 +966 12 652 0820 +966 55 002 3977
2339 Anas Ibn Malik, Alyasmin, Riyadh 13322 +966 11 481 0007 +966 55 297 7753

fiangroup info@fiangroup.com www.fiangroup.com

STAY CONNECTED