

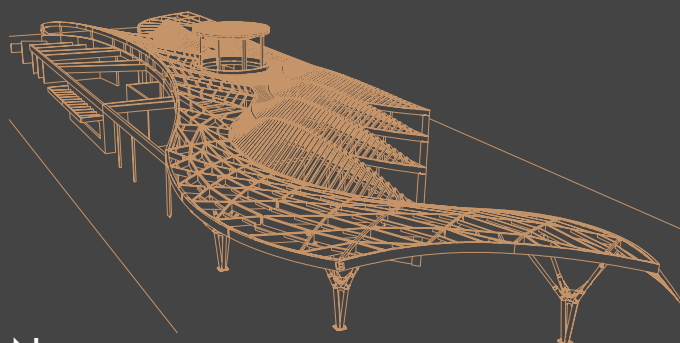


# SIMONIN Projects

*Spécialist in all your construction projects :  
from design to completion on site*



*... and French manufacturer of high-end  
wood components for construction*



  
**SIMONIN**  
Wood Solutions

Since 1967, we are specialised in the design and manufacture of glulam timber structures and wood components for construction. This rich experience allows us to constantly innovate and develop new and innovative constructive solutions to meet your expectations through the most complex projects.

Like the high-rise sites: the headquarters of the Caisse d'Epargne Bourgogne-Franche-Comté and the major sites of the future, such as the Olympic Games in Paris, the Carmelha Tower in Monaco (...), we conceive timber construction differently.



## SITUATION



### SIMONIN SAS

22 ZA des Épinottes  
25500 MONTLEBON  
FRANCE

Tél +33(0)3 81 67 01 26

[simonin@simonin.com](mailto:simonin@simonin.com)



## AT THE CUTTING-EDGE OF TECHNOLOGY

Exceptional, unique, special, and innovative structures are the core of our work. SIMONIN structures are distinguished by their suitability for extremely complex projects.

Our activity is not limited to the manufacture of standard products, we manage internally the whole of a project whatever its complexity of realization, its size or its distance from the production unit by perfectly controlling :

- **engineering** : design, structural calculations, execution, and methods with our internal design office.
- **manufacturing** : production, cutting, CNC, prefabrication, and finishing
- **logistics** : the organization of the different modes of transport (road, sea, and air).
- **installation** : installation or assistance with installation.





## OUR ENVIRONMENTAL APPROACH

By using wood, 70% eco-certified (PEFC), SIMONIN has a negative carbon footprint even before any corrective action. In addition, wood processing produces very little waste : the by-products are used as fuel (heating all of the company's buildings) or recycled by an external plant.

Most of our products, such as Sapisol or NLP-Nelipan® have a positive environmental impact over their entire life cycle.

- Saving in environmental resources
- Reduced energy consumption, insulation without thermal bridge
- Saving in structural wood, therefore in natural resources.



In accordance with our environmental approach, we strive every day to produce better and healthier products.

## AROUND THE WORLD



## HIGH-RISE BUILDINGS



### ATHLETES' VILLAGE 2024 - R+7

Paris - FRANCE

Architect : DREAM

- Construction in progress
- French wood 100%



### VILLA CARMELHA - R+8

Monaco - PRINCIPATY

Architects : GABRIEL VIORA  
STUDIO BELLECOUR

- construction in progress
- Located in the very center
- French wood 100%
- Innovative lifting system Upbrella without crane and weatherproof





**HEAD OFFICE CAISSE D'ÉPARGNE  
BOURGOGNE - FRANCHE-COMTÉ - R+6**

*Dijon - FRANCE*

**Architect : GRAAM**

- French wood 100%



**PROVISIONAL BUILDING  
OF THE PUBLIC SECURITY**

*Monaco - PRINCIPATY*

**Architect : Agence GABRIEL VIORA**

- Located in the very center above main road





## RESORTS / SEASIDE

### THERMAL BATHS SÉQUOIA REDWOOD

Vals-Lès-Bains - FRANCE

Architect : LUC DEMOLOMBE

- French douglas structure 100%



### EXTENSION OF THE CLUB MED VILLAGE

La Pointe aux Cannoniers - ÎLE MAURICE

Architect : JEAN-MICHEL D'UNIENVILLE

- Time on site : 4 months





**HOSTELRY LA CHENAUDIERE**  
*Colroy-la-Roche (Alsace) - FRANCE*

**Architect : JP MARC**

- Curved and double-curved glulam
- Résix® assemblies



**WINE CELLARS**

**WINE CELLAR LE DÔME**  
*Saint-Émilion - FRANCE*

**Architecte : NORMAN FOSTER**  
**(Foster + Partners)**

- Oak straight and curved glulam



## RÉSIDENTIAL

### VILLA PUNTA CANA

*Punta Cana - DOMINICAN REPUBLIC*

**Architects :** PATALANO ARQUITETURA  
MAREINES ARQUITETURA

- Free forms wood structure
- Curved and double-curved glulam
- Résix® assemblies



© Leonardo Finotti - architectural photographer

### VILLA

*IRELAND*

**Architect :** GAGARIN

- Oak glulam
- NLP-Nelipan® roof panels
- Résix® assemblies





## SPORTS COMPLEXES

### SWIMMING POOL CARRASCO LAWN TENNIS CLUB

Montevideo - URUGUAY

Architects : **MARCELO QUINCKE CARRQUIRY**  
**ESTUDIO ARQUITECTO DIEGO ALGORTA CARRAU**

- Spruce glulam structure
- Sapisol® roofing



## MARKET HALL

### MARKET HALL CHARRAS

Courbevoie - FRANCE

Architects : **CROIXMARIEBOURDON**

- Glulam frame in 45° form
- Résix® assemblies





## MUSEUMS - EXHIBITIONS

### MUSEUM OF CONTEMPORARY LATIN AMERICAN ART ATCHUGARRY

*Maldonado - URUGUAY*

**Architect : CARLOS OTT**

- Red Grandis glulam structure
- Résix® assemblies



@surfoto.uy

### CANADIAN PAVILION

(World exhibition 2021)

*Dubai - UNITED ARAB EMIRATES*

**Architects : MORIYAMA & TESHIMA ARCHITECTS**

- Glulam facade



Photographie : Tony Risk



## FLORIADES EXPO 2022

Amsterdam - PAYS-BAS

Architect : WALD

- Glulam + wood frame walls
- Fully prefabricated building in workshop



## FRENCH PAVILION

(World Expo 2015)

Milan - ITALY

Architect : X-TU

- Double-curved
- Free-formed
- 100% French wood







22 ZA des Épinottes • 25500 MONTLEBON • France  
Tel. +33 (0)3 81 67 01 26 • [simonin@simonin.com](mailto:simonin@simonin.com)  
[www.simonin.com](http://www.simonin.com)