

# **Ecologia Soluzione Ambiente SpA**

## Company Profile



# About us

**Ecologia Soluzione Ambiente SpA**  
operates in the environmental  
sector with the aim of finding  
solutions for the world of waste  
management and environmental  
facilities.

*The engine of our work is  
innovation, oriented to  
environmental protection.*





# Our Commitment



We are engaged in responding to the objectives set by **2030 Agenda**.

*We use recycled material in our production and renewable energy, we offer innovative solutions in line with Industry 4.0*



# We're Certified

- **SA 8000** – Social Accountability
- **UNI EN ISO 14001** – Environmental Policy
- **UNI EN ISO 45001** – Occupational Health and Safety
- **UNI EN ISO 9001** – Quality Management Systems
- **UNI PDR 125:2022** – Gender Equality



# Our Solutions

We implement innovation and environment-friendly solutions since 1992

## 01. WASTE



## 02. PLANTS



## 03. SERVICES



## 04. AFTER SALES





# Our Waste Collection System

We are the manufacturers of **2AS – Two Automatic System**.

*A bilateral and vertical system for modern waste collection combined with recycled plastic containers, underground containers and photovoltaic compactors.*







### ROBOTIC EQUIPMENT

2AS bilateral equipment for hooking and lifting of containers, provided with automatic system and control devices for management by single operator.



### CHASSIS

The system can be integrated on the most diffused types of 2, 2+1, 3 and 4 axle chassis on the market.



### CONTAINERS

The system is suitable for the waste collection of HDPE containers equipped with Kinshofer and F-90 hooks.



### WASTE COMPACTORS - CONTAINER WASHERS AND OPEN TOP CONTAINERS

Complementary stationary or roll-off equipment, suitable to every chassis for waste management and logistics.



### SOLAR POWERED COMPACTORS

Ecological waste compactors powered by photovoltaic energy, suitable for temporary events and markets, movable by 2AS system.

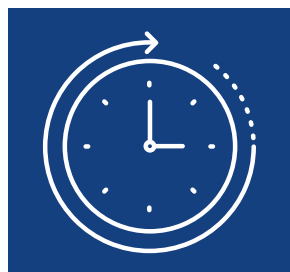


### UNDERGROUND

The system is suitable for the waste collection of underground containers equipped with Kinshofer and F-90 hooks.



# 2AS



## **COMPLETE OPERATING CYCLE | 62"**

Reduction of the time needed to complete the entire operating cycle



## **SINGLE MAN OPERATED**

Greater efficiency in execution of the service with minimal use of staff



## **WORKERS HEALTH**

Management of the operating cycle from the cabin = better working conditions and less risks for the health of the operators



## **THE BEST ROUTE**

The technology applied to the containers allows to program and improve the collection



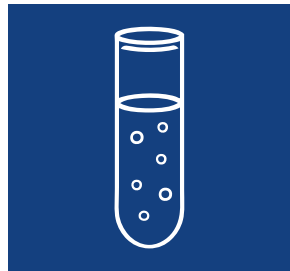


# HDPE Containers



## LIGHT

The use of polyethylene allows a considerable reduction in total weight, increasing the potential load



## RESISTANT TO HIGH SHOCKS AND CHEMICAL AGENTS

Polyethylene maintains its characteristics even in the event of collision and is particularly resistant to solvents, paints and high/low temperatures



## NOISE REDUCTION

HDPE cushions noise by 30%, especially during glass conferment



## NO PAINT

Polyethylene is intrinsically pigmented and doesn't require the use of polluting paints





# HDPE Containers Recycled & Recyclable

ESA's high-density polyethylene containers are made of different percentages of recycled material.

**50%**  
EXTERNAL  
CHUTE

**30%**  
EXTERNAL  
BODY

**50%**  
EMPTYING  
BOTTOM  
DOORS

**98%**  
POSITIONING  
CENTERING  
GUIDES





# CONTAINERS'S LIFE CYCLE



CO<sub>2</sub>

REDUCTION





# Underground Containers



## REDUCED VISUAL IMPACT

Particularly suitable to contexts of environmental, architectural value and in densely populated neighborhoods



## LOW ODOR EMISSIONS

Waste doesn't give off odors, since it remains below street level



## LARGE VOLUMES

ESA underground containers have large volumetric capacities



## ATTENTION TO THE WEAKEST

Loading points easily accessible to the disabled, the elderly and children





# Solar Compactors



## SELF-POWERED

4 photovoltaic panels of 255 W each



## TEMPORARY EVENTS

For fairs, markets, events



## CONTROLLED ACCESS SYSTEM



## RESORT AREAS

For peak loads during the high season





# HDPE bin "CeStò"



## SUSTAINABLE

Made of recycled and recyclable HDPE (high density polyethylene).



## SAFE

Safety is increased thanks to the anti-splinter material and the internal visibility of the bin body.



## FIREPROOF

Made with HDPE V0 (high density polyethylene) anti-combustion.



## HYGIENIC

Its structure allows rainwater to flow away without creating stagnation.

CLOSED  
BIN



OPEN BIN





# HDPE bin "CeStò"



## URBAN HYGIENE

Reduces the quantity of small waste defined "walking waste".



## URBAN DECOR

It enhances the town and the materiale, not bing at risk of rust, guarantees a design unchanged over time.



## CLEAN CITIES AND PARKS

Helps to preserve the cleanliness of cities, parks and children's play areas by keeping them clean.



## RESPECT THE GPP

It respects the EU Green Public Procurement thanks to the manufacturing material.





# Services linked to the WASTE world

We are concerned with the **POSITIONING** and **REGENERATION** of equipment used in the world of waste collection:

- waste bins
- waste containers

We provide **WASHING** and **HYGIENE** of containers, bells and fleets of trucks used in the collection of waste.





# We build water treatment plants

Water after purification can be re-used in other activities, such as agriculture





# After-sales service H24

Customer service is an essential service that guarantees safety and efficiency in the use of products



## ORDINARY AND EXTRAORDINARY MAINTENANCE

We take care of the equipment throughout the entire product life cycle



## FLEET MANAGEMENT OF MACHINES

Through the management service, we can anticipate the needs of your machine park



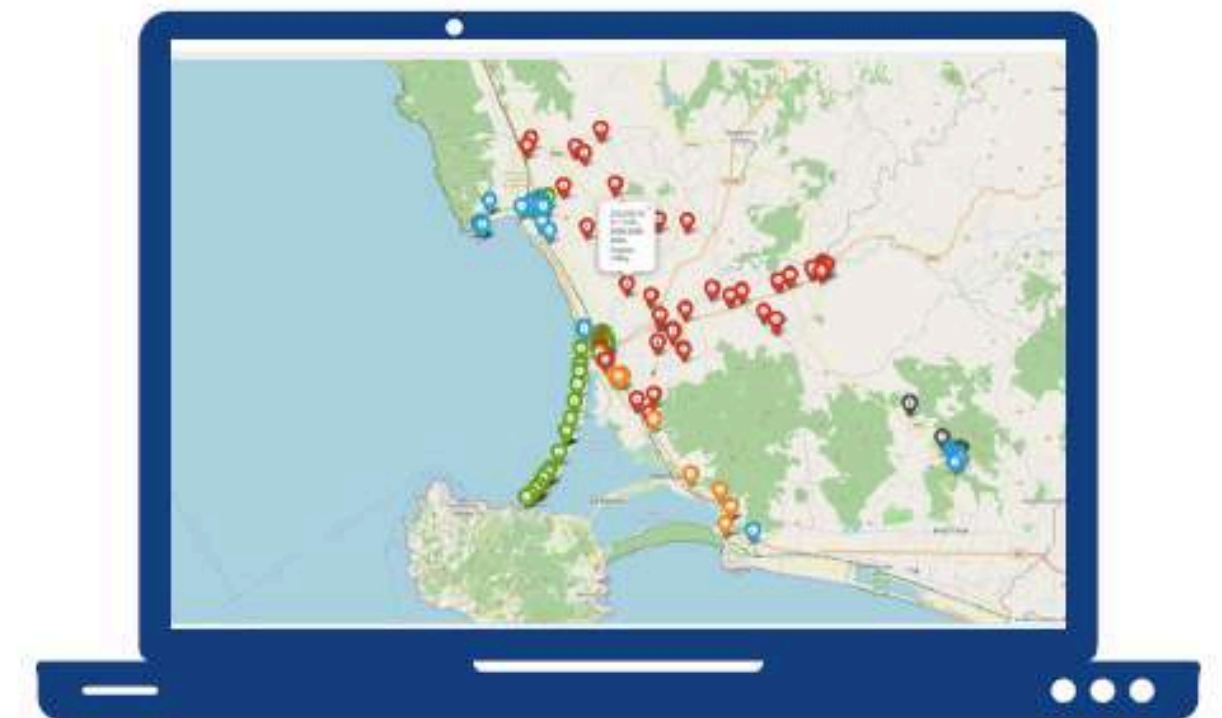
## REMOTE ASSISTANCE

By using a SIM we are able to monitor your equipment and ensure the right remote support



## CUSTOMER TRAINING

We give the client the opportunity to carry out training courses on all equipment





# Where we are in the world





# Thank you

**Ecologia Soluzione Ambiente SpA**



**Follow us**  
on our Social Channels



**Scan** QR Code  
& **Visit** our website