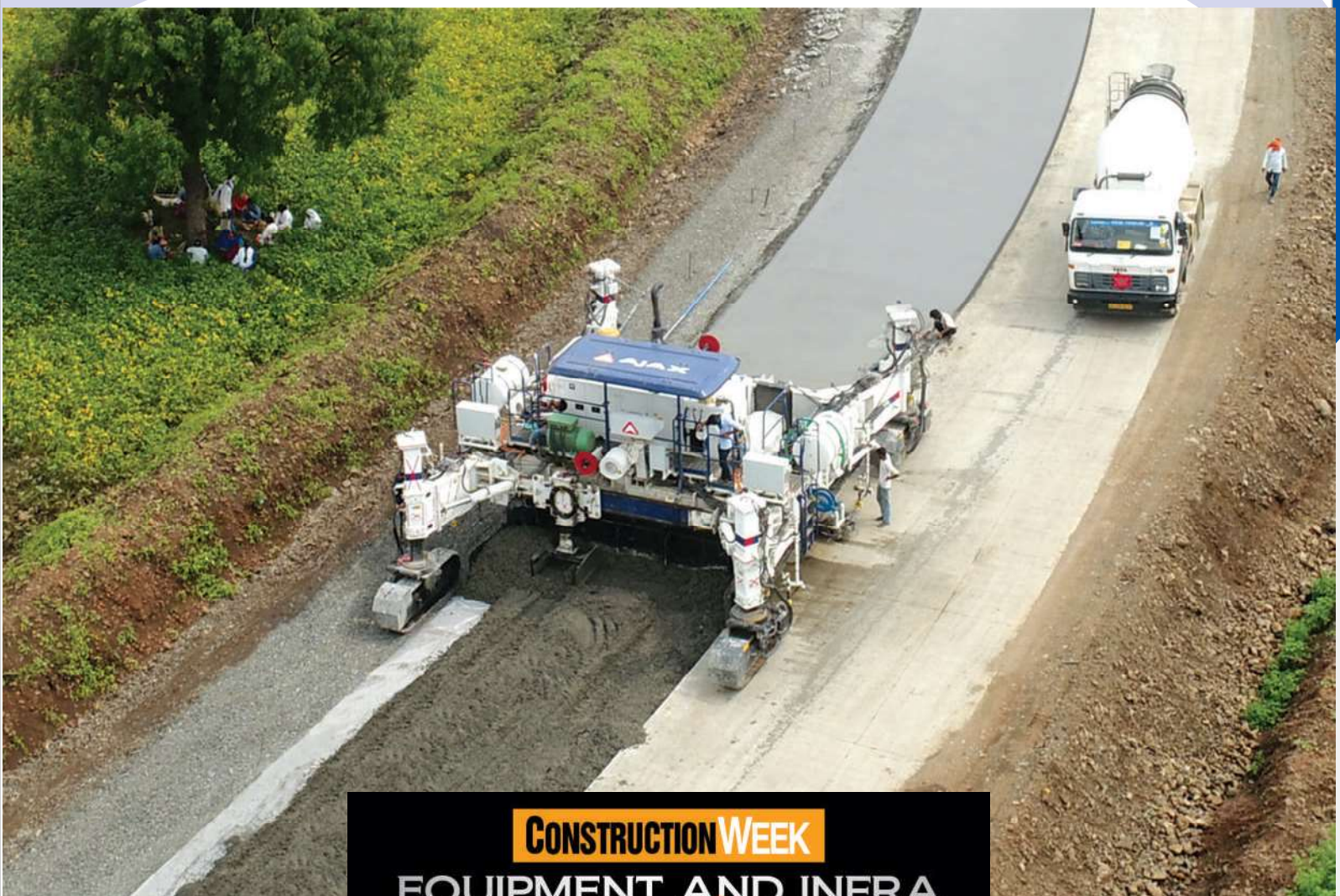




**SLIPFORM PAVER**  
**SPX SERIES**  
(Concrete Slip-form Paver)

# AJAX Concrete Slip-Form Paver wins **EXCELLENCE IN ENGINEERING DESIGN 2021 AWARD**



**CONSTRUCTION WEEK**  
**EQUIPMENT AND INFRA  
CONFERENCE & AWARDS**  
■■■ 2021 ■■■

## **SLIP-FORM PAVER** **SPX SERIES**

AJAX is renowned for its in-house engineering expertise and is proud to introduce the first Slip-Form Paver designed, engineered and manufactured in India.

It is a versatile machine for concrete paving projects and is the best solution for your paving needs.

PAVER	
Model	Paving Width
SPX 754	3.5 - 7.5 m
SPX 1204	5 - 12 m



## HIGHLIGHTS OF SPX SERIES

Heavy duty design for  
**High quality paving,**  
concrete slabs ranging  
from 3.5-12M ensures  
high productivity

**High Frequency  
Electrical vibrators,**  
ensures optimum  
consolidation of  
concrete

**Self-loading  
DBI unit,**  
benefits customer with  
quick dismantling,  
loading & unloading  
of the unit



**Flexibility & ease  
of operation,**  
different steering  
modes suiting the job  
site conditions for  
paving and  
transportation

**Powerful & fuel-  
efficient** diesel engine  
for optimum paving  
performance

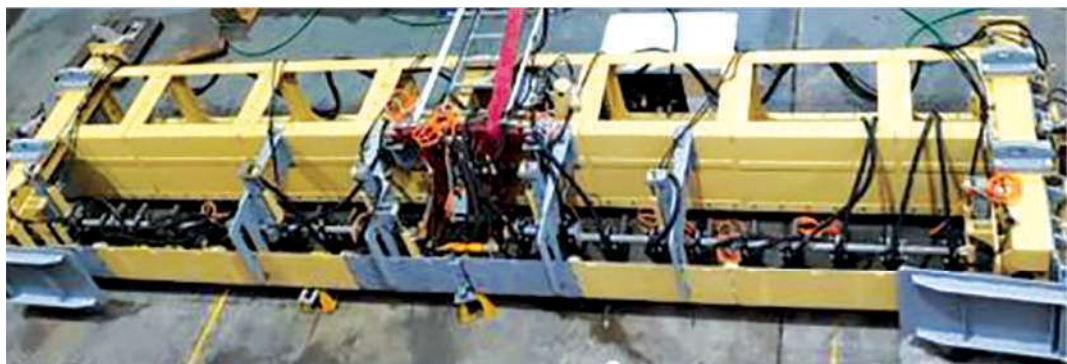
## PERFECT PAVING QUALITY

We at Ajax believe not only in building quality machine but also perfect paving quality performance during the construction of concrete pavement. With heavy-duty design robust structures, efficient hydraulic system combined with Intelligent control system, paving efficiency and ease of operation, the Ajax Slip form pavers is the ideal partner for medium & large-scale projects in Paving widths from 3.5 m up to 12 m.



**Spreading plough** for uniform spreading of concrete for the entire paving width.

**Strike-off plate** to control the material flow into the vibration chamber.



The compacted concrete is given initial geometric shape & size by heavy duty sectionalised **Paving mould**. Proportional **Electro-hydraulic Height & Steering Sensors** by means of controllers for precision & achieving results within the tolerances.



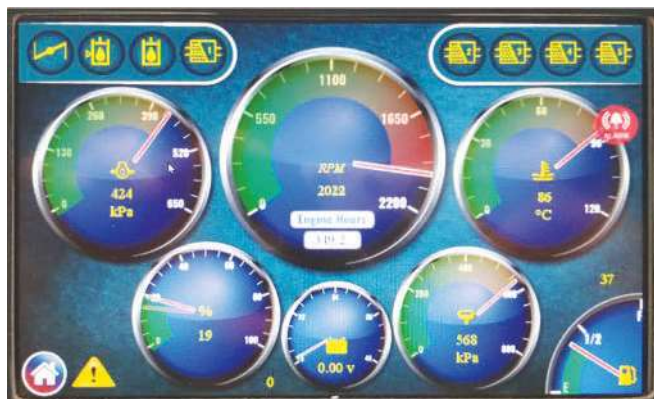
## INTELLIGENT CONTROL SYSTEM

The control system is indigenously developed with a network of controllers for performing and controlling all functions.



**Ergonomically** designed dashboard with keypads grouped in a structured manner for easy Identification and operation.

**7" full color display** with easily understandable text and graphics for monitoring & diagnostics.








This system is based on **CAN-bus**, which represents the state of the art in electronic vehicle equipment and therefore guarantees maximum system safety. Furthermore, it facilitates the system's central operation and due to its modular design, its ability for expansion.

## TECHNICAL SPEC

DESCRIPTION	SPX 754	SPX 1204
<b>DIESEL ENGINE</b>		
Manufacturer	CATERPILLAR	CATERPILLAR
Type	C7.1	C9
Cooling	WATER	WATER
Qty. of Cylinders	6	6
Rated Output	168 / 225 (kW / hp)	240 / 325 (kW / hp)
Speed	2000 rpm	2000 rpm
Displacement	7013 cc	8800 cc
<b>CONCRETE PAVING KIT</b>		
Working Width	3.5 - 7.5 m	5 - 12 m
Paving Thickness	Up to 500 mm	Up to 500 mm
Transverse Camber	0 - 3%	0 - 3%
<b>ADVANCE DRIVE</b>		
Working Speed	0 - 7 m / min	0 - 10 m / min
Traveling Speed	0 - 20 m / min	0 - 25 m / min
<b>ELECTRICAL SYSTEM</b>		
Voltage	24V DC	24V DC
Electric Vibrators	110 V AC, 3 Phase, 200 Hz	110 V AC, 3 Phase, 200 Hz
<b>CRAWLER UNITS</b>		
No. of Tracks	4	4
Crawler Unit from (L x W)	2095 x 305 mm	2415 x 400 mm
Stroke of Leveling Cylinders	1100 mm	1000 mm
<b>FILLING CAPACITIES</b>		
Fuel Tank	400 L	600 L
Hydraulic Oil Tank	580 L	760 L
Water Tank	500 + 500 L	500 + 500 L
<b>VIBRATION UNIT</b>		
Vibration	Electric	Electric
Slipform Poker Vibrator	Curved (D76)	Curved (D76)
Qty. of Poker Vibrators	24	32
Electrical Drive Power	60 kVA	80 kVA
Operational Weight	48000 kg	78000 kg
<b>TRANSPORTATION DIMENSIONS</b>		
Basic Machine Min. (L x W x H)	13520 x 3100 x 3150 mm	11590 x 3560 x 3500* mm
Basic Machine Min. (L x W x H)		15590 x 3560 x 3500** mm
* 5m Paving width, **9m Paving width		

## UNPARALLELED NETWORK IN CONCRETING INDUSTRY

-  **AJAX Headquarters**
-  **Regional & Area Offices**
-  **Dealer Offices**
-  **Dealer Touch Points**
-  **Factory**



**35+**  
Dealer  
Locations

**100+**  
Touch Points

### AUTHORISED DEALER



*\*Specifications are subject to change without prior notice, Product shown herein may include optional scope of supply. T&C Apply.*



Please Scan to know  
more about Ajax



### The Next-Gen 360° Concreting Solutions



Self-Loading  
Concrete Mixer



Batching Plant



Transit Mixer



Concrete Pump



Boom Pump



Self-Propelled  
Boom Pump



Concrete  
Slip-Form Paver

