



شركة عبد الله هاشم المحدودة
ABDULLAH HASHIM COMPANY LTD.
MACHINERY DIVISION



Yale
LIFT TRUCK TECHNOLOGIES

LANDOLL

Bendi

YANMAR

Kirloskar
Oil Engines

ELGI
Always Better.

IMER
TOGETHER WE BUILD

Kubota
Escorts Kubota Limited

SONALIKA

Landini

xylem
Let's Solve Water

AC FIRE PUMP
a xylem brand

Bell & Gossett
a xylem brand

LOWARA
a xylem brand

Lubi
PUMPS-MOTORS

dp pumps

GRUNDFOS

oasis pump

Who We are

Abdullah Hashim Company Limited (AHCL), established in 1940, is a respected business entity in the Kingdom of Saudi Arabia, operating through two primary divisions: Automotive and Machinery. The Machinery Division is committed to delivering premium industrial solutions by representing globally recognized brands. Our focus on service excellence and technical integrity ensures our customers receive superior products, expert support, and an exceptional overall experience.

Abdullah Hashim Company Limited - Machinery Division is a leading provider of advanced industrial equipment and solutions across Saudi Arabia. With a diversified portfolio serving sectors such as construction, mining, energy, and logistics, Machinery Division partners with globally established manufacturers—including Yanmar, Yale, Bendi, Xylem, DP-Pumps, LUBI, Kirloskar, ELGi, and many others to offer reliable, high-performance machinery tailored to local market needs.

We are dedicated to delivering value through quality products, dependable after-sales service, and deep technical expertise. Our integrated approach ensures that clients benefit from end-to-end support, including installation, training, and spare parts availability.

As a strategic contributor to Development in Saudi Arabia, Machinery Division plays a vital role in supporting the Kingdom's industrial transformation and infrastructure development. By fostering innovation, embracing sustainable practices, and investing in human capital, Machinery Division aligns with national goals to diversify the economy and enhance the role of the private sector in driving long-term growth.



PUMPS



Pump it up with **Lubi**

Lubi was established in 1965 and manufactures a wide variety of water pumps and motors, etc. Lubi holds the capacity to manufacture 700000 Units annually for domestic market and internationally, in more than 80 countries.

Lubi Pumps provide pumping solutions from more than 5000+ different models of pumps which can be customised in raw materials or design based on the field application.



Totally Integrated & Sustainable Pumping Solution



50+
YEARS OF
PUMPING TRUST



Deep Well Submersible Motors & Pumps



Domestic Pumps



Sewage and Drainage Pumps



Split Case Pumps



Fire Set



Short & Long Coupled End Suction Pumps

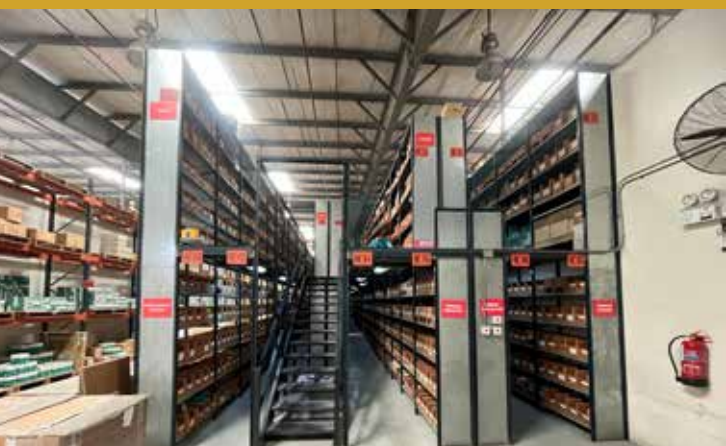


شركة عبد الله هاشم المحدودة
ABDULLAH HASHIM COMPANY LTD.
MACHINERY DIVISION

AFTER SALES SUPPORT

The AHCL Machinery Division delivers comprehensive after-sales services across Saudi Arabia through an extensive operational footprint. We operate from three regional hubs and maintain a robust network of over 55 dealers, ensuring effective coverage even in remote areas.

Our after-sales infrastructure includes dedicated service centers and parts facilities strategically located throughout the Kingdom. To maximize uptime and customer convenience, over 90% of our service support is delivered directly at customer sites via fully equipped mobile service vehicles. This field-based approach enables rapid response for installation, maintenance, and technical support, reinforcing our commitment to reliability and customer satisfaction.





شركة عبد الله هاشم المحدودة ABDULLAH HASHIM COMPANY LTD. MACHINERY DIVISION



NETWORK AND COVERAGE

The AHCL Machinery Division operates on a nationwide scale with three main regional centers and a wide dealer network (55 in total) to cover remote areas. In addition to sales outlets, we have service and parts facilities across KSA, with mobile installation and field service offered on customer's sites via service vehicles, making up 90% of our total service.





شركة عبد الله هاشم المحدودة
ABDULLAH HASHIM COMPANY LTD.
MACHINERY DIVISION

Abdullah Hashim Company Limited (AHCL) was founded in 1940. It has two major divisions: Automotive & Machinery. The Machinery Division is dedicated to provide premium products of our esteemed clients and dear customers. Our professional standards are meant to grant our customers the highest degree of satisfaction and consumer experience. Adhering to the most innovative technology and exemplary approach in our service. We take pride in bringing the best of all products from across the world at one platform.



WESTERN REGION

JEDDAH (HEAD OFFICE)
P.O. BOX 44, JEDDAH 21411
TEL: +966 12 263 8200

CENTRAL REGION

RIYADH
P.O. Box: 314, RIYADH 11411
TEL: +966 11 438 5395

EASTERN REGION

DAMMAM
P.O. Box: 307, DAMMAM 31411
TEL: +966 13 814 2905

NORTH WESTERN REGION

MADINA | JAZAN | TABUK
+966 53 488 2279