

**TABILLO**<sup>®</sup>  
*always on TOP*

HOIDEICA

HPL

TABLE

**24** TOPS

**25**



**Tabillo:** optimal choice for HoReCa  
Style, Durability and Functionality combined seamlessly...







Worldwide Presence  
in **60+** Countries

*It doesn't take much to stand out... But it takes a lot to stand tall.*

Introducing, a **tabletop** which creates the distinction of its presence in more than **60 countries** with hundreds of enviable designs and unparalleled features.

**Welcome, to the world of TABILLO !!**  
**With you we make that difference distinct.**

**Tabillo tabletops** are compact HPL panels pressed under high pressure and temperature, cut to required shapes and sizes, packaged, and shipped to suit your spaces.

Tabillo is adorned with all versatile features making it perfect for interior as well exterior applications, it bears conformations to all international standards like BIS, Greenguard, Greenbuilding, GreenLabel, FSC, CE, EN 438, NEMA, etc. strengthening the credibility of our products and brand.







## Choosing the Right Table Tops for Your Cafe & Restaurant

Picking your restaurant's appearance is almost as important as creating your signature dish.



An Outdoor Cafe In Spain



An Outdoor Cafe In Italy



Indoor Restaurant In Philippines



A Outdoor Restaurant In Austria



A Cafe In Denmark



*Memories are made  
when gathered  
around the table!*





An Outdoor Cafe In France



An Open Bar In Milan



An Italian Streetside Restaurant In Hungary



A Motorway Restaurant In Germany



A Indoor Cafe In Italy



A Lounge In Greece

*You can set the overall style and tone by the table tops you choose.*

## BACK SLOT FIXING

1



Set Table Top upside down on a firm surface. Insert the 4 eye bolts from the round groove and Slide them inside of the groove at desired length.

Coloque la mesa boca abajo sobre una superficie firme. Inserte los 4 cáncamos por la ranura redonda y deslícelos dentro de la ranura a la longitud deseada

Poser le plateau à l'envers sur une couverture pour éviter les rayures. Insérer les 4 vis dans la rainure et faites-les glisser jusqu'à la position souhaitée.

Stellen Sie die Tischplatte auf eine Decke, um die Kratzer zu vermeiden. Fügen Sie die 4 Schrauben in der Nut ein und verschieben Sie die Schrauben bis zu der gewünschten Position.

2



Place the pre assembled table base arm onto table top. In alignment of the eye bolt, make sure the hole aligns to the bolt.

Coloque la pata premontada sobre la mesa. Para la correcta alineación del cáncamo, asegúrese de que el orificio esté alineado con el agujero del tornillo.

Placer la croix du pied de table préassemblé sur le plateau. S'assurer que les trous sur la croix soient alignés avec les vis placées à l'étape 1.

Stellen Sie das Kreuz von dem vormontierten Gestell auf die Tischplatte und befestigen Sie es mit den Schrauben.

3



To finish, secure the base firmly to your Tabillo table top. Using the eye bolts nut supplied (already aligned as per step 2). Tighten securely and ensure there are no movement upon bolting. PLEASE DO NOT OVER TIGHTEN THE BOLT

Para terminar, asegure la base firmemente a su mesa Tabillo. Usando la tuerca y los tornillos suministrados. (ya alineados según el paso 2). Apriete bien, tuerca y tornillo, y asegúrese de que no haya movimientos después de atornillar. POR FAVOR, NO APRIETE DE MÁS EL TORNILLO.

Pour terminer, fixer le pied bien fermement sur votre plateau en utilisant les écrous fournis (déjà alignés conformément à l'étape 2). Serrer fermement et s'assurer qu'il n'y a pas de mouvement au niveau des boulons. VEILLER À NE PAS FORCER LE PAS DE VIS.

Befestigen Sie das Gestell an der Tischplatte mit den Schraubenmutter. Ziehen Sie die Schrauben fest an. Die Schrauben nicht zu stark anziehen, damit das Schraubengewinde nicht beschädigt wird.

4



Carefully turn the unit back to its feet and enjoy your Tabillo Table.

Con cuidado, dé la vuelta al conjunto, póngalo sobre el pie y disfrute de su mesa Tabillo.

Placer le pied Verona préassemblé en face des 6 trous prévus à cet effet. Fixer fermement à l'aide des vis M6x20mm. VEILLER À NE PAS FORCER LE PAS DE VIS.

Stellen Sie das vormontierte Gestell Verona vor den 6 Bohrungen. Befestigen Sie das Gestell mit den Schrauben M6X20mm. Die Schrauben nicht zu stark anziehen, damit das Schraubengewinde nicht beschädigt wird.





## STANDARD SIZES AND SHAPES

Standard sizes in **CM**



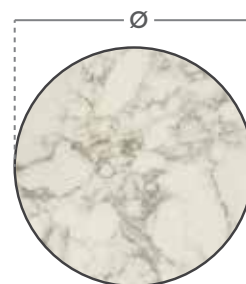
### SQUARE

45 X 45  
50 X 50  
55 X 55  
60 X 60  
65 X 65  
70 X 70  
80 X 80  
90 X 90  
100 X 100  
120 X 120



### RECTANGLE

70 X 60	120 X 65
80 X 60	120 X 70
90 X 160	120 X 80
90 X 180	140 X 80
100 X 180	145 X 80
100 X 210	150 X 90
110 X 60	180 X 70



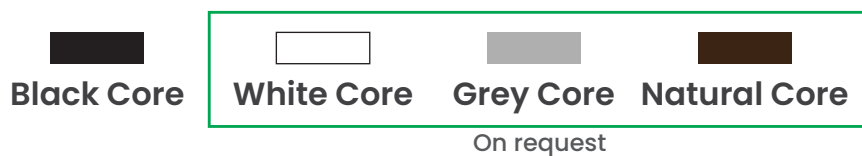
### ROUND

60 Ø  
70 Ø  
80 Ø  
90 Ø  
100 Ø  
120 Ø

## FULL SHEET SIZE

- 1860mm X 4300mm / 72" X 165"
- 1400mm X 4300mm / 55" X 165"
- 1300mm X 2800mm / 51" X 110"
- 1840mm X 3670mm / 72" X 144"
- 1300mm X 3050mm / 51" X 120"
- 1220mm X 3050mm / 48" X 120"
- 1220mm X 2440mm / 48" X 96"

## CORE



## THICKNESS

All Tabillo tops have standard 10mm and 12 mm thickness.

## EDGES



Bullnose



Rounded



Straight

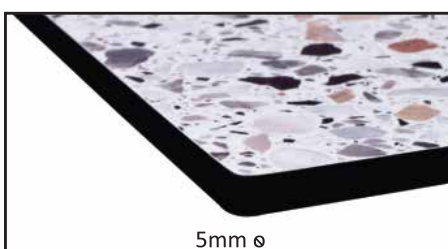


Bevelled



Knife

## SIDE PROFILE



★ Table Tops can be customised for other sizes and shapes



## *World Class State of the Art Manufacturing - in India*

***Tabillo tabletops are made from compact HPL and manufactured at of the most modern plants in the world.***



*State of the art Impegratum line*

Extra processes are inducted, to ensure that unlike other HPL tabletops, **Tabillo** is suitable to withstand strenuous outdoor conditions in any climate.

The product is a **finished HPL top** with **high UV resistance making it Colourfast**, has treated core edges and with ability to withstand over **2500 cycles** of abrasion.

With a smart array of **designs and finishes**, Tabillo becomes the **perfect choice for any Hotel, Restaurant & Cafe application for both indoors as well as outdoors.**



*Multi daylight press*





## FEATURES



Antimicrobial



Water  
Resistant



Flame  
Retardant



Scratch  
Resistant



Stain  
Resistant



Colourfast



Weather  
Resistant



Environmental  
Friendly



Rot  
Resistant



Impact  
Resistant

## MAINTENANCE & PREVENTION

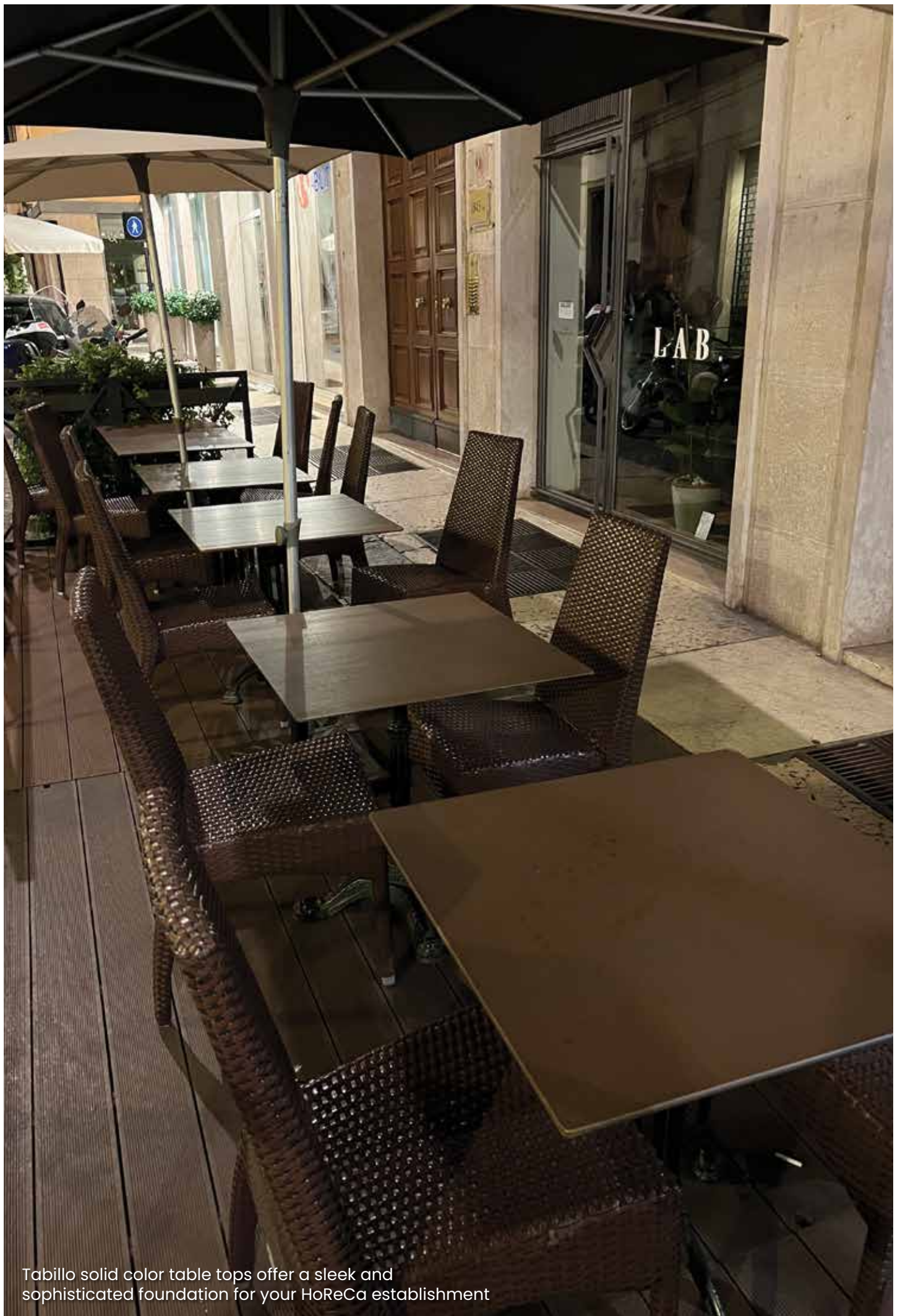
Tabillo Tabletops are made of very durable HPL panels with unmatched features that requires minimal maintenance. These have a non porous surface which makes it easy to clean with just a mild cleaning agent and soft cloth.

- Direct contact with hot surfaces should be avoided. With a use of hot plate.
- Avoid direct cutting on surface by a sharp object to prevent scratches.
- Avoid using aggressive cleaning agents. These panels can withstand normal soft cleaning agents.
- Avoid shoving heavy and hard objects such as beer and shopping crates.
- Avoid covering the top with a protective cover which may cause permanent stains due to weathering, suffocation or moulds. Let the top breathe normally.

## CERTIFICATIONS

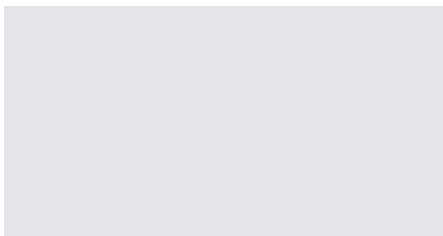




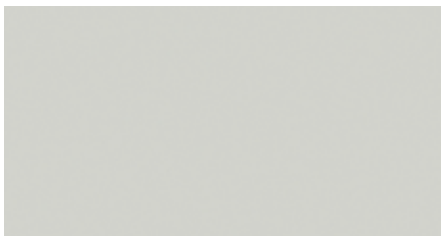


Tabillo solid color table tops offer a sleek and sophisticated foundation for your HoReCa establishment





**RC 13**  
WHITE



**RC 602**  
SILVER GREY



**RC 801**  
THUNDER GREY



**RC 751** NEW  
GREY



**RC 604**  
ANTHRACITE GREY



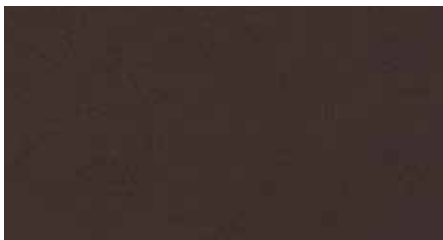
**RC 11**  
BLACK



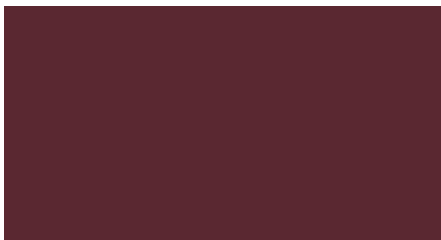
**RC 714**  
FIESTA ORANGE



**RC 711**  
FLAMING RED



**RC 23**  
COFFEE



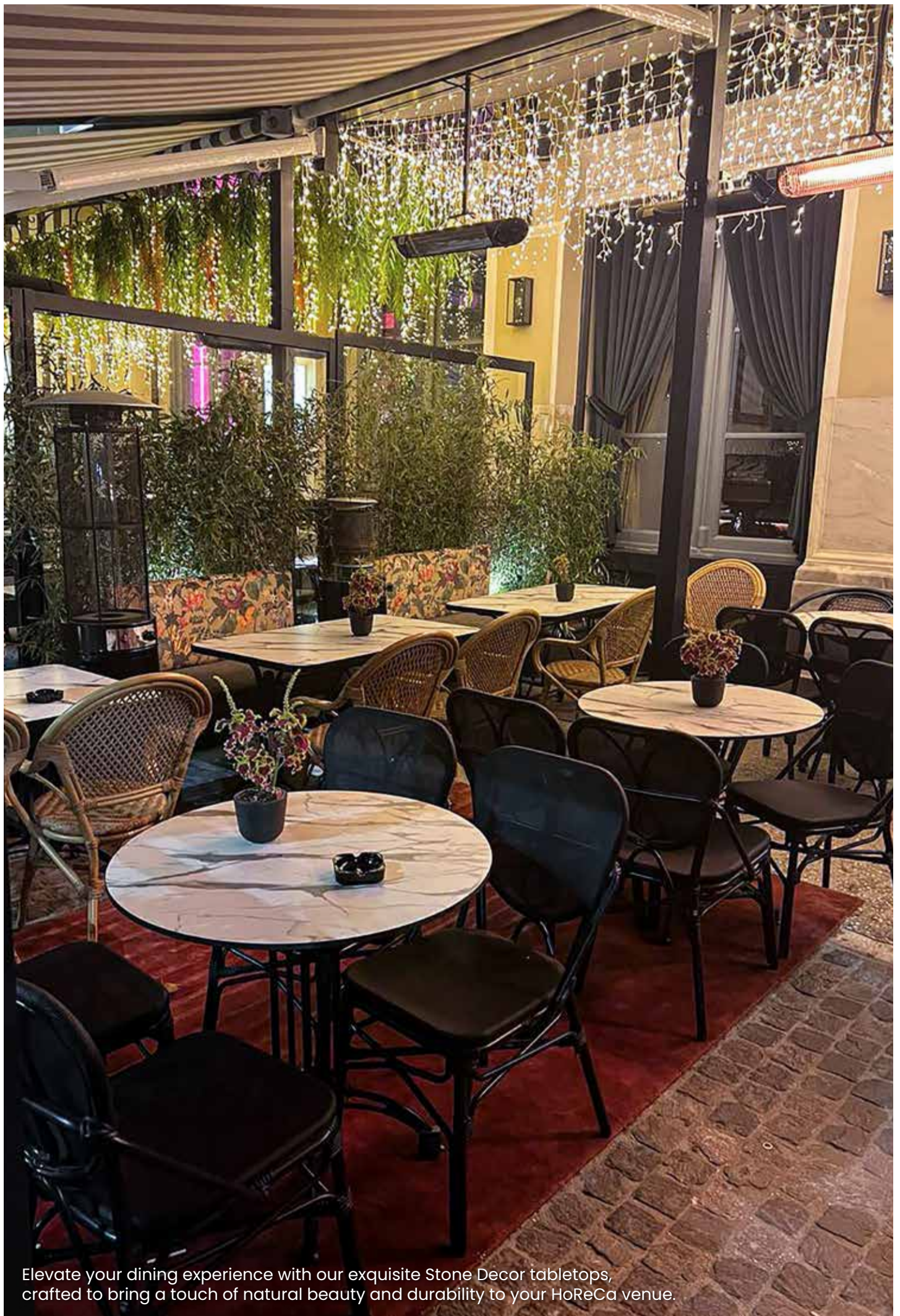
**RC 605**  
RED



**RC 713**  
JADE BLUE







Elevate your dining experience with our exquisite Stone Decor tabletops, crafted to bring a touch of natural beauty and durability to your HoReCa venue.





**RC 809** NEW  
FUJI



**RC 805** NEW  
POMPEU SLATE



**RC 806** NEW  
POMPEU SLATE



**RC 804** NEW  
ADVIKA







**RC 654**  
VENTO MARBLE



**RC 921**  
MARBLE



**RC 931**  
BIANCO ONYX



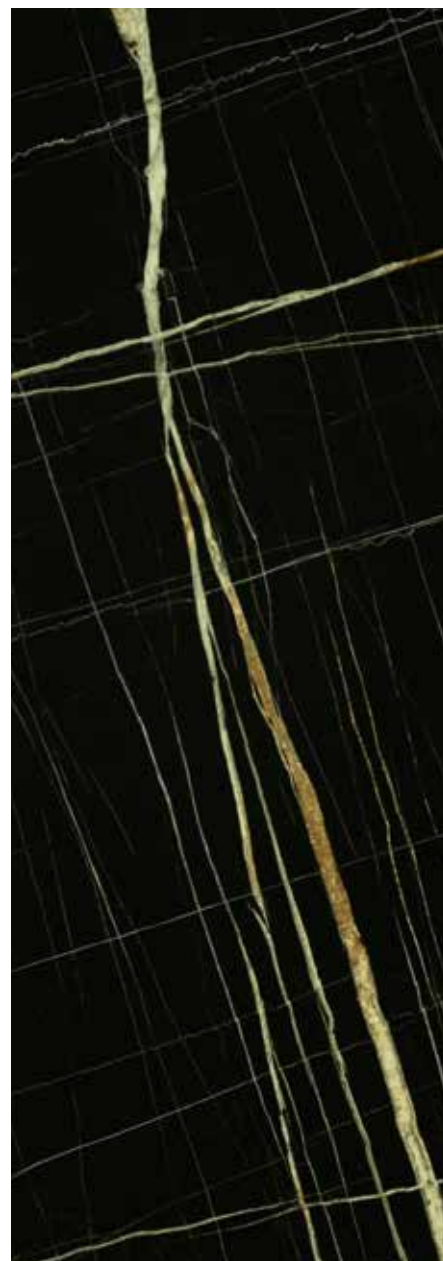




**RC 461**  
VENETO



**RC 550**  
LETIZIA

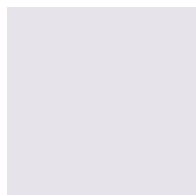


**RC 930**  
COSMIC NERO

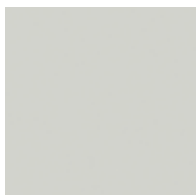


# Decors AT A GLANCE

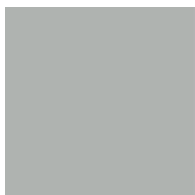
## Uni Decors



RC 13



RC 602



RC 801

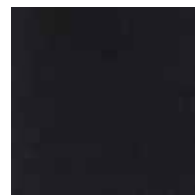


RC 751

NEW



RC 604



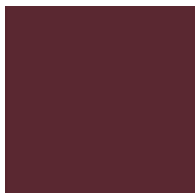
RC 11



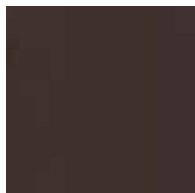
RC 714



RC 711



RC 605



RC 23



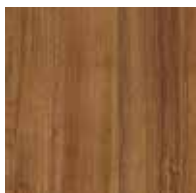
RC 713

## Wood Decors



RC 696

NEW



RC 695

NEW



RC 697

NEW



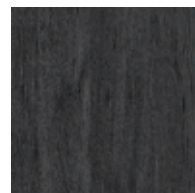
RC 694

NEW



RC 691

NEW



RC 699

NEW



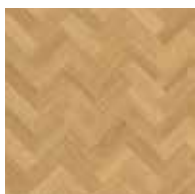
RC 698

NEW



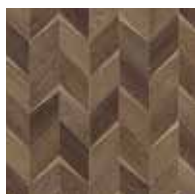
RC 692

NEW



RC 693

NEW



RC 808

NEW



RC 642



RC 459



RC 679



RC 922



RC 644



RC 641

NEW



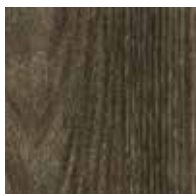
EXP 51



RC 580



RC 656

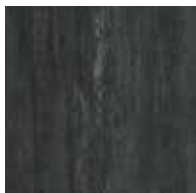


RC 469

## Rustic Decors



RC 404



RC 427



RC 408



RC 405



RC 407



RC 406



**Stone Decors**



RC 809

NEW



RC 805

NEW



RC 806

NEW

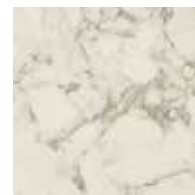


RC 804

NEW



RC 654



RC 921



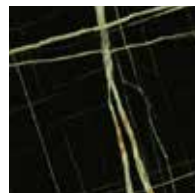
RC 931



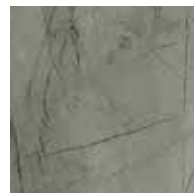
RC 461



RC 550



RC 930



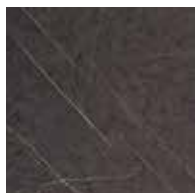
RC 671



RC 672



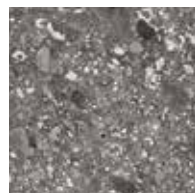
RC 927



RC 661



RC 669



RC 573



RC 670



RC 934



RC 933



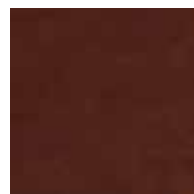
RC 677



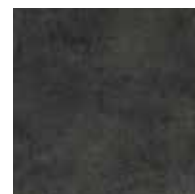
RC 479



RC 923



RC 651



RC 919



RC 687



RC 659



RC 660



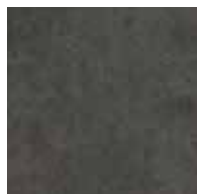
RC 924



RC 637



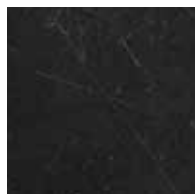
RC 925



RC 918



RC 926



RC 684



RC 658



RC 932

*Decor is the silent storyteller of a space...*



**CROWN DECOR PVT. LTD.**

One42, North Tower, Suite 401- 403, 4th Floor  
Ambli Bopal Road, B/H Ashok Vatika, Ahmedabad - 380058, Gujarat, India  
Contact : +91 79 4008 7979

**GLOBAL CONTACT POINT**

The Regency, 2nd Floor, Unit 3, 8 Hungerford Street Kolkata-700017, India  
Contact : +91 33 2283 0188