



Avermann

Precast concrete
technology
Our knowledge for
your vision





Avermann – Strong group for ambitious goals



Dr Maike Keller née Avermann
Managing Director

The motto of the Avermann Group is "Technology for a good life". It describes a promise to ourselves, to our customers and partners, and to the people who benefit directly or indirectly from our products and services.

People around the world have been placing their trust in our solutions for over 70 years. These people are what drive us. They inspire in us the courage to develop innovations in environmental and precast concrete technology that are urgently needed in the face of today's challenges.

We stand up to this challenge with high-performance technologies, proximity to people, the courage to innovate and find solutions that make our world more sustainable and the work of our customers more efficient and cost-effective. This is the attitude we rely on to solve the tasks that are set for us in every area of the company.



Environmental technology Wide portfolio for a clean environment

At Avermann you will find the ideal solution for every application, from stationary machines to large-scale complete plants.



Laser and bending technology Individual service for large and small parts

Avermann's laser and bending technology offers the full range for your project. From miniature to XXL, we shape your precision metal parts.



Precast concrete technology Plants and components for efficient production

Precast concrete technology from Avermann offers you everything you need for cost-effective and high-quality production, from individual components to fully custom plants.

Decades of experience have made us one of the world's leading suppliers of equipment for precast concrete plants. We place particular emphasis on customer-oriented solutions, special developments and perfect communication with our customers.

From stationary production or continuous flow manufacturing, to formwork or highly automated circulation systems, we offer exactly the right solutions for your application.



Precast concrete technology

Solutions for any desired production capacity

Avermann is your first port of call for the development of high-quality precast concrete technology for companies of all sizes. We plan, manufacture and assemble everything from compact solutions for small to medium-sized production quantities to complex plants – all from a single source.

Regardless of how extensively your plant is designed, you will always receive the highest degree of productivity, cost-effectiveness, flexibility and durability.



Concreting bucket hooked up to crane

Our services and products at a glance:

- › **Pallet circulation plants** and specialised systems for the production of prefabricated floor slabs and double walls, solid and sandwich components
- › **Stationary production plants** for miscellaneous manufacturing possibilities
- › **Machines** for all production areas
- › **Formwork and mould construction** for precise and high-quality production
- › **Complete solutions** for any desired application
- › **Consulting, knowledge transfer and services** from specialised project managers and sales engineers

Consulting and planning

Our expertise for your project

From initial idea to final planning, we'll work with you to determine exactly all the requirements that your solution should offer. This is the first important step towards your custom production plant, precisely tailored to your wishes and objectives.



Engineering

Experts for special solutions

Avermann has experienced engineers at your disposal, who specialise in the development, construction and testing of your plant. They ensure that your solution sets standards in terms of efficiency, performance, precision and flexibility. The fact we closely examine every detail makes it possible to utilise potential that offers you clear competitive advantages in production.



"At Avermann, I was assisted exclusively by qualified experts from the very first meeting. This paid dividends for the entire project."

The specifications for the conceptual design of the plant were: lean, flexible and modern production with a low investment volume and the possibility to modernise and expand. The result was a production line with single-table workstations, which is moved by a central transport unit to the various machine stations.

Hans Verner Lind

ConFac A/S – Randers – Denmark

Manufacturing and assembly

Maximum precision for highest quality

At Avermann you receive your plant including all necessary components – technically outstanding, on time and ready for operation – enabling you to start your production immediately.



Aftersales service

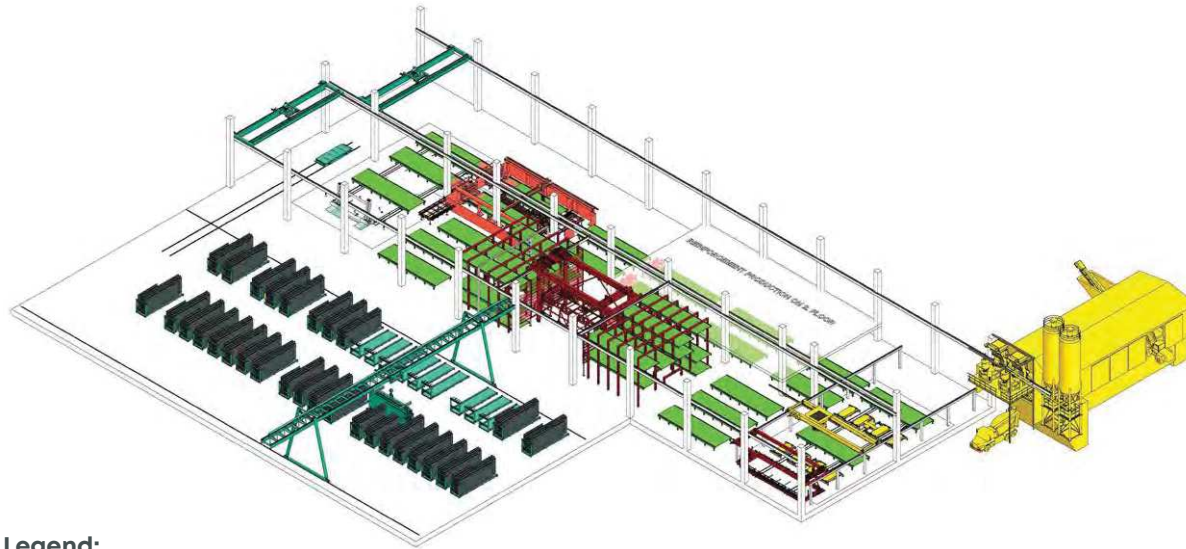
Services for stable continuous operation

At Avermann, perfect service does not end with delivery of the finished plant. From original spare parts to maintenance and repair to precise modernisations and expansions, we will happily ensure that your plant continues to work as well as it did on the day it was commissioned.



Conventional circulation plants

Fast cycle times thanks to specialised workstations



Legend:

- ◆ Fresh concrete section
- ◆ Formwork and moulds
- ◆ Preparation line
- ◆ Handling precast concrete parts
- ◆ Precast units, open storage
- ◆ Pallet transport
- ◆ Hardening and reworking

Avermann circulation plants, e.g. for slab and double wall production, offer a high degree of automation. The result is extremely efficient production.

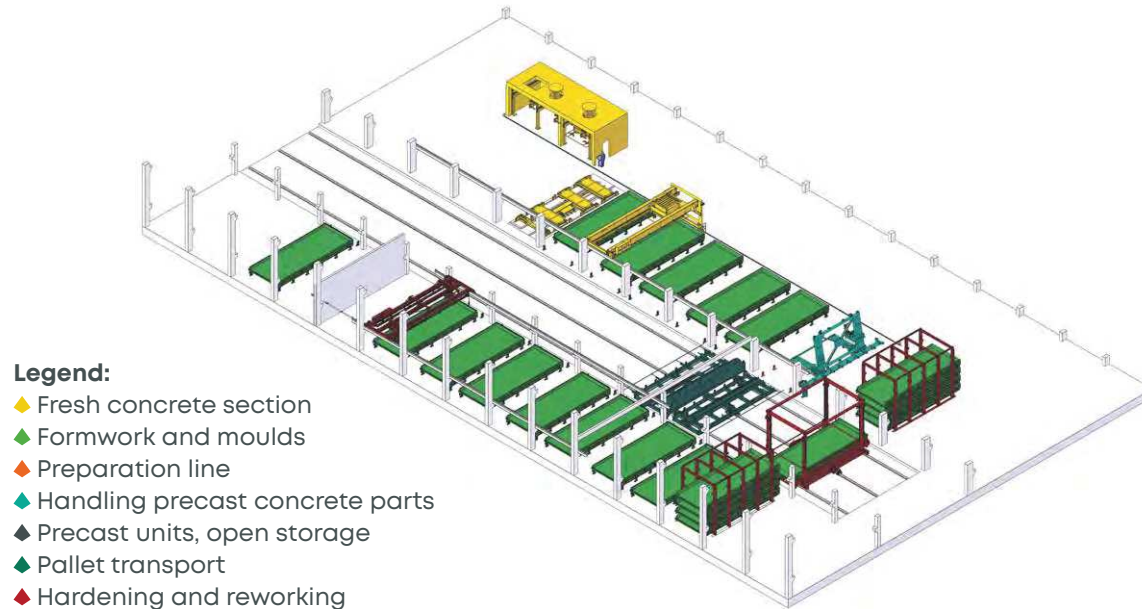
Your benefits:

- › Central material supply and formwork storage
- › Optimised cycle time through workstation organisation
- › Short processing time for uniform elements
- › Optimum logistics



Highly flexible circulation plants with central transportation system

Combination of circulation technology and stationary production



The central transportation system with two pallet places is the main feature of this flexible production principle. All transport processes are efficient and adaptable.

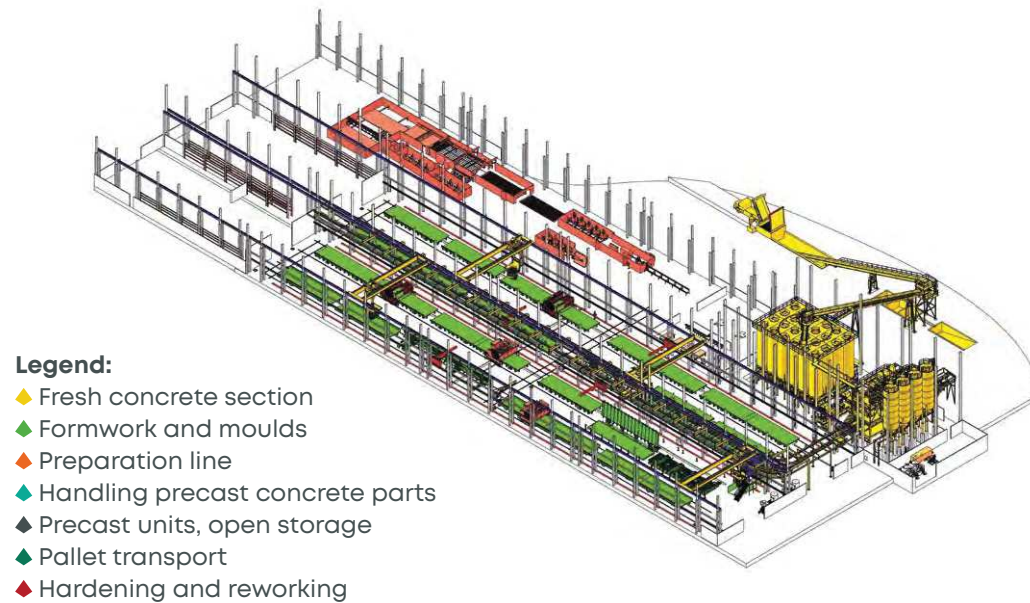
Your benefits:

- › Flexible and specialised workstations
- › Simplified material supply
- › Formwork storage by the workstations
- › Variable processing times with very flexible production
- › Optimised hardening technology
- › High level of flexibility with optimised transport



Stationary production with tilting tables or production lines

Flexible production for excellent cost-effectiveness



Avermann's stationary production lines and tilting table production solutions perfectly equip you for the efficient production of solid walls, sandwich elements and special parts.

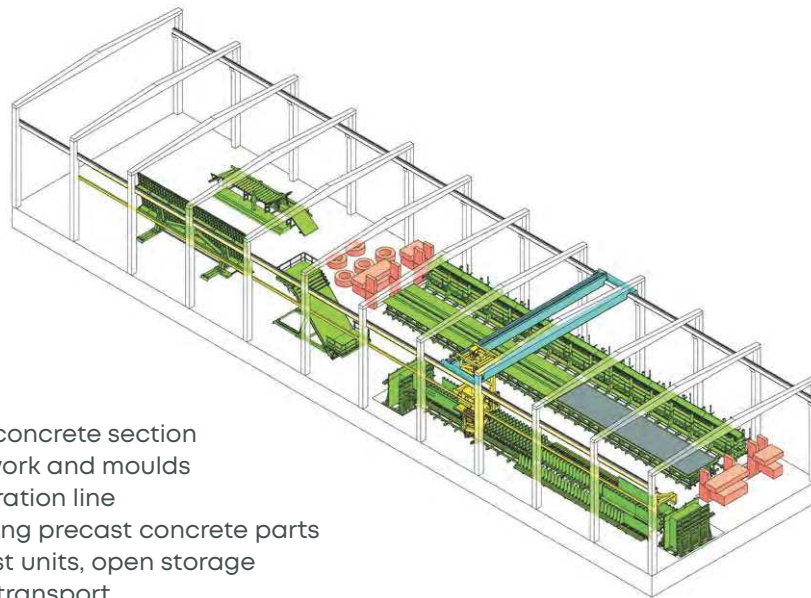
Your benefits:

- › Decentralised storage logistics
- › Formwork storage by the workstations
- › Variable processing times with very flexible production
- › Improved added value
- › Unlimited flexibility



Production plants for structural components

Formwork and moulds for every application



Legend:

- ◆ Fresh concrete section
- ◆ Formwork and moulds
- ◆ Preparation line
- ◆ Handling precast concrete parts
- ◆ Precast units, open storage
- ◆ Pallet transport
- ◆ Hardening and reworking

At Avermann you will find all components for precise and cost-effective formwork and mould construction. Our high-quality solutions can be used in all precast concrete plants in the world.

Your benefits:

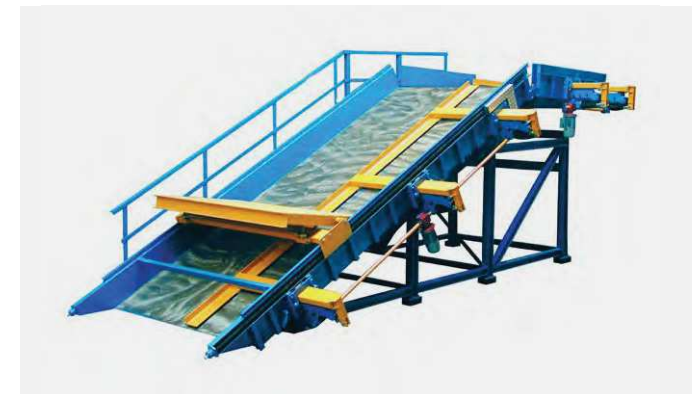
- › Maximum precision for perfect results
- › Long service life
- › Efficient and reliable production
- › Years of experience in formwork and mould construction



TT formwork



Twin formwork for beams and columns with foundation plates



Staircase formwork in special design

Custom special solutions

Experts for special requirements



Rack feeder for outside storage

At Avermann, the benefit to the customer always comes first with precast concrete technology. If specific requirements cannot be covered by a standard system, we will develop a tailor-made solution especially for you.

Your benefits:

- › Plant construction according to individual wishes and specifications
- › Tailor-made for the space available
- › Special dimensioning according to your production objectives
- › Planning, production and assembly from a single source



Cross-beams with automatic load compensation



Loading device for precast slab stacks

Avermann international Solutions for global use



Avermann Betonfertigteiletechnik
Osnabrück, Germany

Customers all over the world have relied on precast concrete technology from Avermann for years. Because we offer plants and components that make flexible, high-throughput, end-to-end production possible. Wherever you want to produce – Avermann Betonfertigteiletechnik can be at your side with help and advice worldwide.



Avermann

Avermann

Betonfertigertechnik GmbH & Co. KG

Lengericher Landstr. 35
49078 Osnabrück
Germany

Telephone +49 5405 505 - 0

Fax +49 5405 6441

info@avermann.de

www.avermann.de